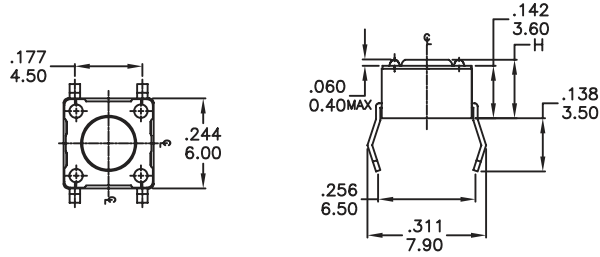


● SPECIFICATIONS

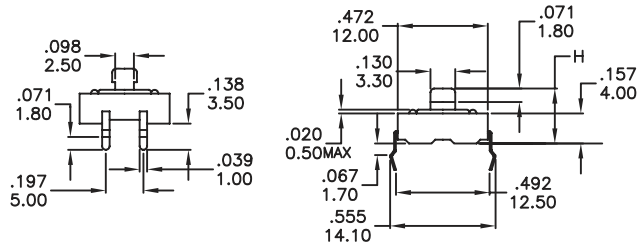
CONTACT: Mechanical contact
 CIRCUIT: SPST
 RATING: DC 12V 50mA
 TRAVEL: 0.3±0.15 mm
 OPERATING FORCE: 160±50gf
 260±50gf
 CONTACT RESISTANCE: 100mΩ max.
 LIFE: 100,000 cycles min.

DTS-62N



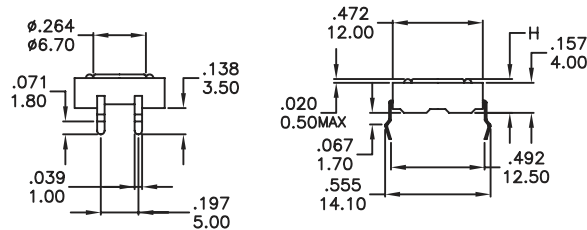
DTS-66	13.00[.512]
DTS-65	9.50[.374]
DTS-63	7.00[.275]
DTS-62	5.00[.197]
DTS-61	4.30[.169]
PROD. NO.	H

DTS-24N



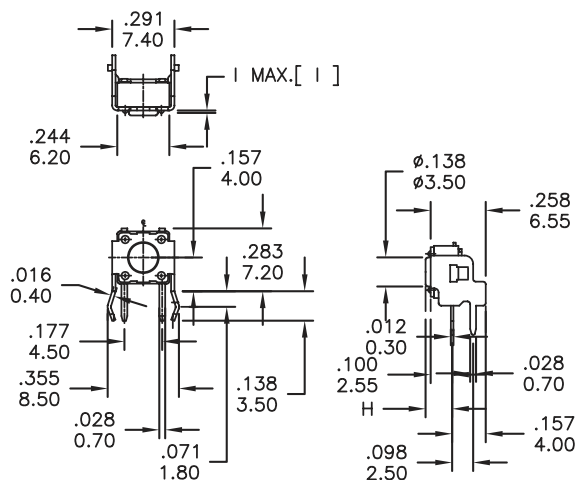
DTS-25	8.50[.335]
DTS-24	7.30[.287]
DTS-21	4.30[.169]
PROD. NO.	H

DTS-21K



DTS-25	8.50[.335]
DTS-24	7.30[.287]
DTS-21	4.30[.169]
PROD. NO.	H

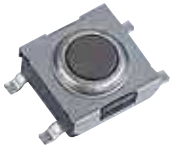
DTSA-61N



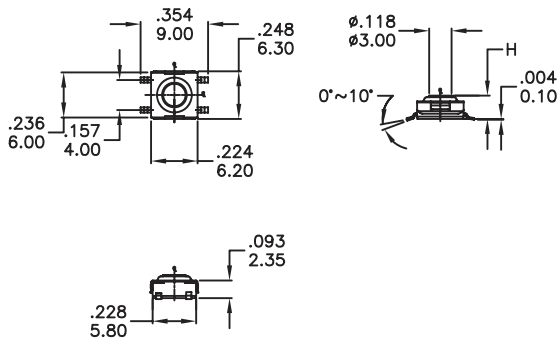
DTS-66	11.85[.467]	0.4MAX[.016MAX]
DTS-65	8.35[.329]	
DTS-63	5.85[.230]	
DTS-62	3.85[.152]	
DTS-61	3.15[.124]	0.3MAX[.012MAX]
PROD. NO.	H	I

DTS Series

Tact Switches

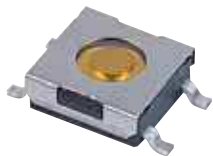


DTSMW-66

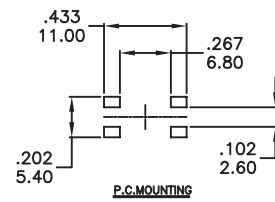
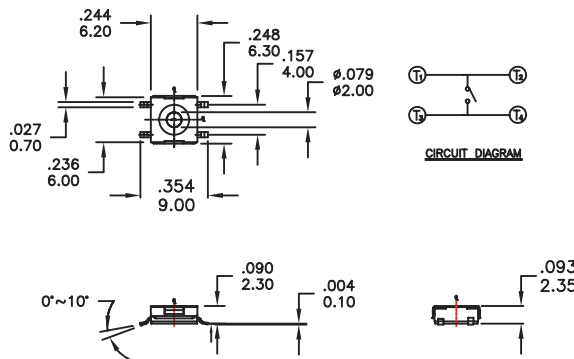


CONTACT: Stainless Steel.
 CIRCUIT DISC: Phosphor brnze with Silver cladding.
 RATING: Brass with silver cladding.
 BASE: UL94V-0 PPA Hing-Temp. Thermoplastic

DTSMW-69	3.80[1.50]
DTSMW-68	2.30[.091]
DTSMW-67	5.20[.205]
DTSMW-66	3.10[.120]
DTSMW-65	3.50[.138]
DTSMW-64	4.50[.177]
PROD. NO.	H



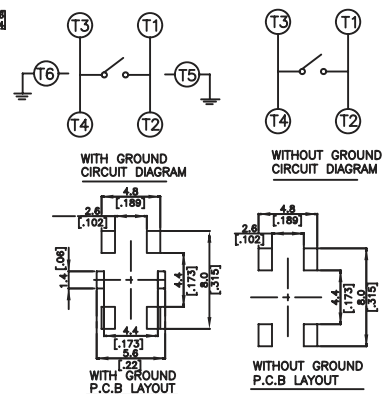
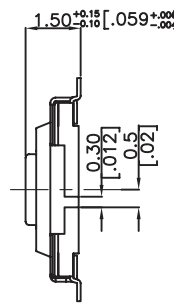
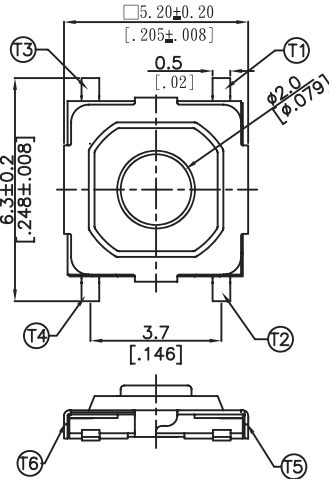
DTSMW-68



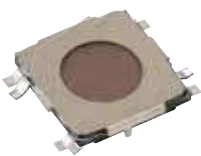
	OPERATING FORCE	STEM COLOR
N	160gf	Brown
S	160gf	Silver
R	260gf	Red



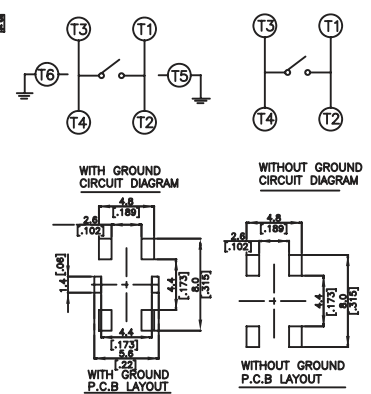
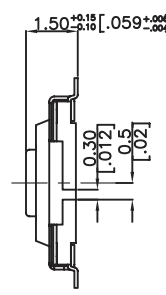
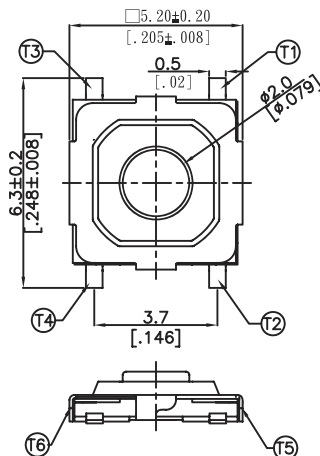
TMG-533-V



NOTE:
 1. ALL DIMENSIONS ARE IN MILLIMETERS. BRACKETED DIMENSIONS ARE IN INCHES.
 2. GENERAL TOLERANCES ± 0.20 mm.



TMG-523-V



NOTE:
 1. ALL DIMENSIONS ARE IN MILLIMETERS. BRACKETED DIMENSIONS ARE IN INCHES.
 2. GENERAL TOLERANCES ± 0.20 mm.

Crest Technologies Pty Ltd. www.cresttech.com.au sales@cresttech.com.au +61 3 9873 8830

DTS Tact Switches

