

DS DA DP Series

Dip Switches

● SPECIFICATIONS

SWITCH FUNCTION: SPST, 1 thru 12 positions.

CONTACT RATING: Switch : 25 mA @ 24VDC.
Carry : 100 mA @ 50VDC.

INSULATION RESISTANCE: 100M Ω min @ 500 VDC.

CONTACT RESISTANCE: Initial : 50m Ω @ 2-4VDC @ 100mA.
After Life : 100m Ω @ 2-4VDC @ 100mA.

OPERATING LIFE: 2,000 make-and-break cycle each circuit.

OPERATING FORCE: 1000gf max.

TRAVEL, ACTUATOR: 2.0mm typical.

DIELECTRIC STRENGTH: 500 V RMS min @ sea level
between adjacent terminals.

CAPACITANCE: 5pf max. between adjacent terminals.

TEMPERATURE RANGE: Operating/Storage : -40° C to 85° C.

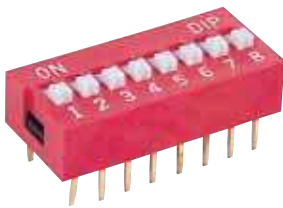
VIBRATION: To MIL-STD-202F. Method 201A.

SHOCK: To MIL-STD-202F. Method 213B, Condition A.

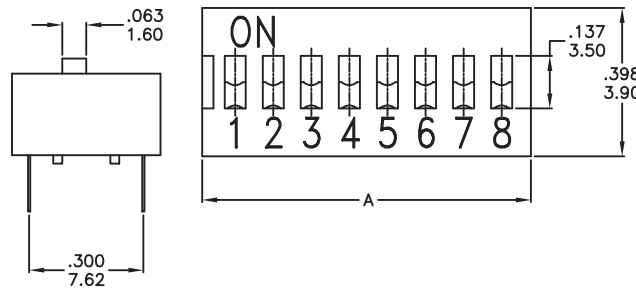
SOLDERING RECOMMENDATION: Wave : 500° F(260° C) for 5 sec
max. Hand : 30W soldering iron @ 608° F(320° C) for 2s typical. Keep all
switches in the "OFF" position during soldering and cleaning process.

MODEL OPTIONS

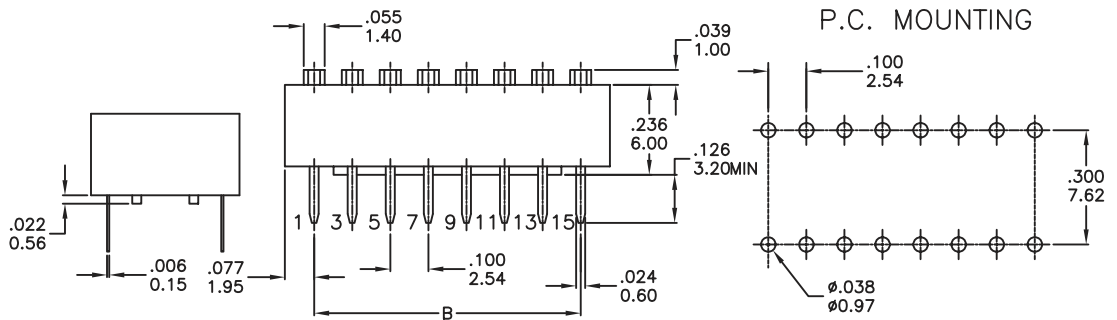
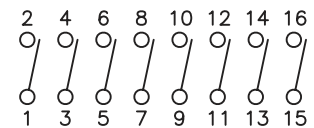
1 PC PIN



DS



SCHEMATIC

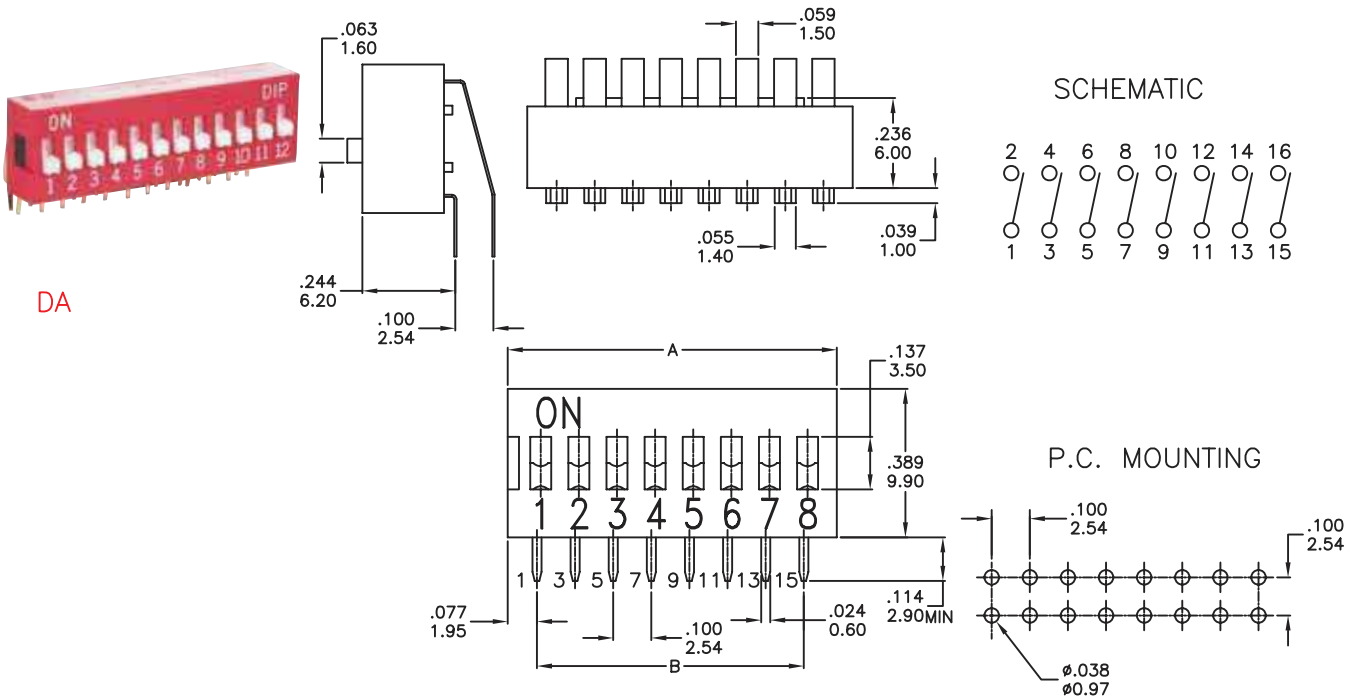


Position 1 denotes Pin NO. 1.

DS DA DP Series

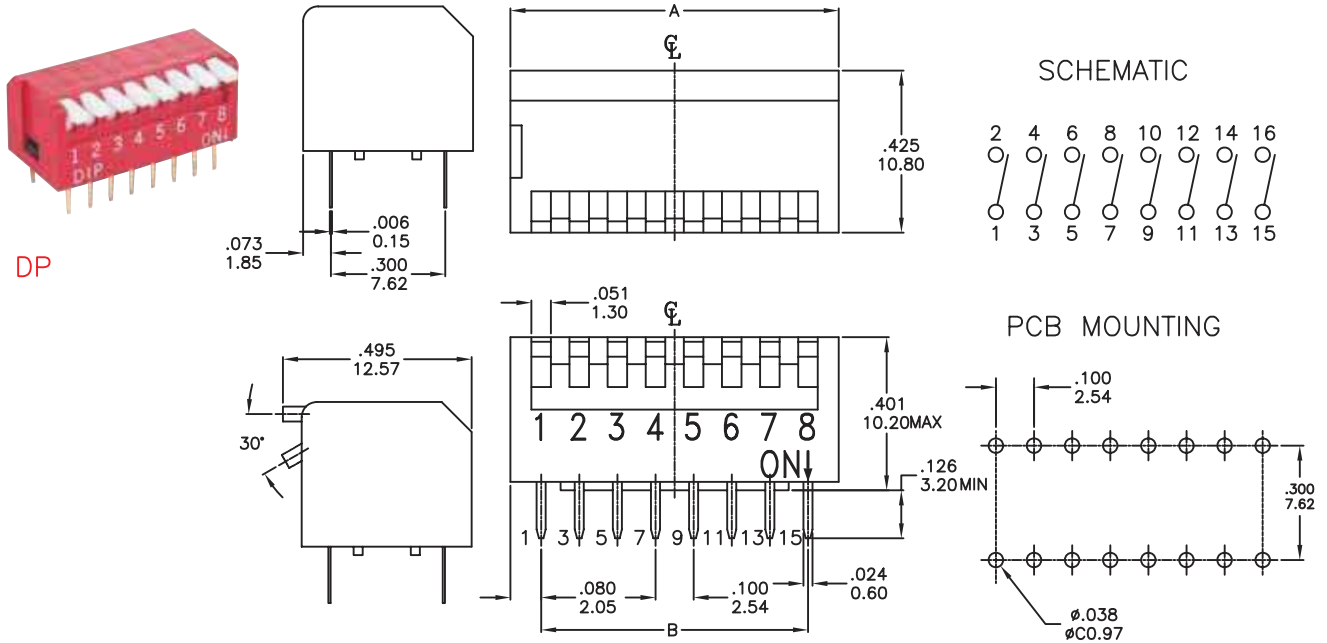
Dip Switches

2 RIGHT ANGLE PC PIN



Position 1 denotes Pin NO. 1.

1 PC PIN

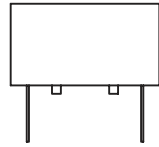


Position 1 denotes Pin NO. 1.

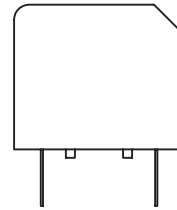
DS DA DP Dip Switches

Crest Technologies Pty Ltd. www.cresttech.com.au sales@cresttech.com.au +61 3 9873 8830

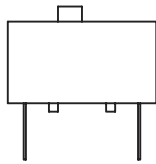
ACTUATOR OPTIONS



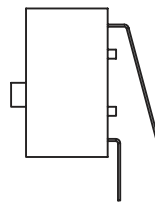
RECESSED*



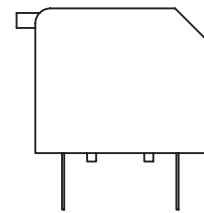
SHORT KEY
TOPSIDE "ON"



EXTENDED*



EXTENDED
TOPSIDE "OFF"



LONG KEY
TOPSIDE "ON"

DS

DA

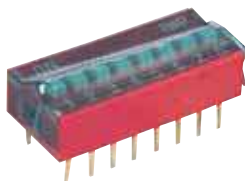
DP

NUMBER OF POSITIONS

Positions	2	3	4	5	6	7	8	9	10	12
"A" Dimension	6.64 (.261)	9.18 (.361)	11.72 (.461)	14.26 (.561)	16.8 (.661)	19.34 (.761)	21.88 (.861)	24.42 (.961)	26.96 (1.061)	32.04 (1.261)
"B" Dimension	2.54 (.100)	5.08 (.200)	7.62 (.300)	10.16 (.400)	12.7 (.500)	15.24 (.600)	17.78 (.700)	20.32 (.800)	22.86 (.900)	27.94 (1.100)

SEAL OPTIONS

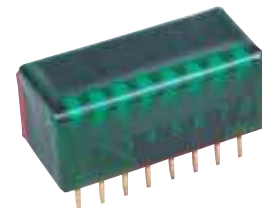
T TOP TAPE SEALED



DS



DA



DP