

2TE Series

Sub-Miniature Toggle Switches(Washable)



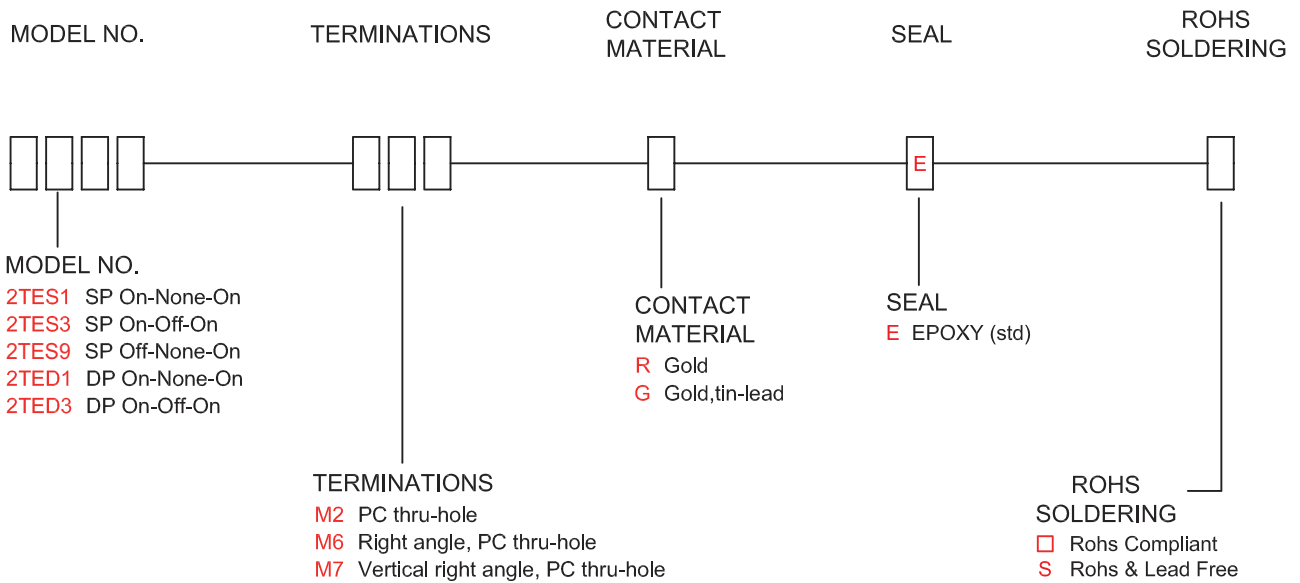
SPECIFICATIONS

- CONTACT RATING:** Max 0.4 VA max @ 48 VAC or DC Min. 1 u A/20 mV AC or DC
- MECHANICAL LIFE:** 60,000 make-and-break cycles at full load.
- CONTACT RESISTANCE:** 50mΩ max. initial @ 2-4VDC, 100mA
- INSULATION RESISTANCE:** 1,000MΩ min.
- DIELECTRIC STRENGTH:** 500 V RMS@sea level.
- OPERATING TEMPERATURE:** -30° C to 85° C.
- DEGREE OF PROTECTION :** IP67

MATERIALS

- ACTUATOR** - Brass,chrome platede, internal O-ring seal.Standard for all actuators .
- BUSHING & HOUSING** - Stainless Steel
- CASE** - glass filled nylon 6/6(UL94V-0)
- SWITCH SUPPORT** - Brass,tin plated.
- CONTACT/TERMINALS** - Cphosphor bronze gold - plated over nickel plated.
- TERMINAL SEAL** - Epoxy

HOW TO ORDER



2TE Sub-Miniature Toggle Switches(Washable)

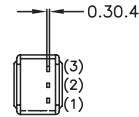
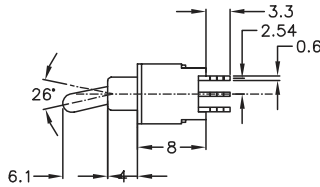
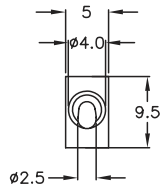
Crest Technologies Pty Ltd. www.cresttech.com.au sales@cresttech.com.au +61 3 9873 8830



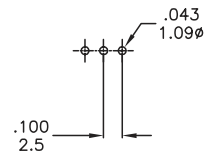
SWITCH FUNCTION

NO. POLES	MODEL NO.	SWITCH FUNCTION			CONNECTED TERMINALS / SCHEMATIC		
		POS.1	POS.2	POS.3	POS.1	POS.2	POS.3
SP	2TES1	ON	NONE	ON	2-3	N/A	
	2TES3	ON	OFF	ON		OPEN	
	2TES9	OFF	NONE	ON	OPEN	N/A	
DP	2TED1	ON	NONE	ON	2-3,5-6	N/A	
	2TED3	ON	OFF	ON		OPEN	

M2



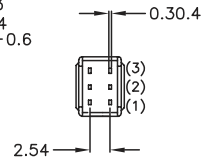
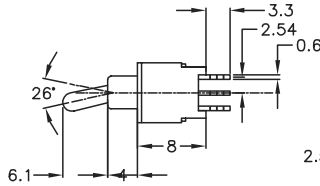
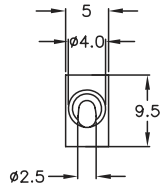
P.C. MOUNTING



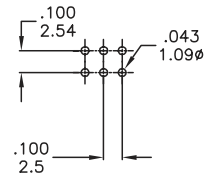
SPDT

Part No. Shown : 2TES1-M2RES

M2



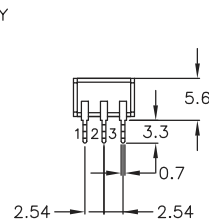
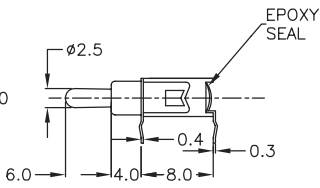
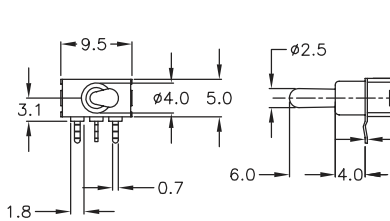
P.C. MOUNTING



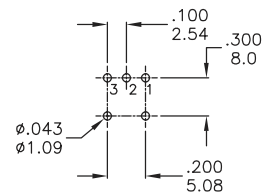
DPDT

Part No. Shown : 2TED1-M2RES

M6



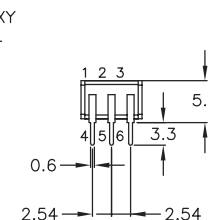
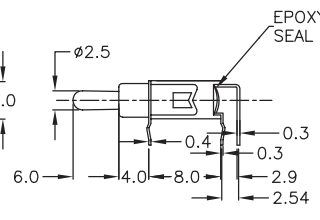
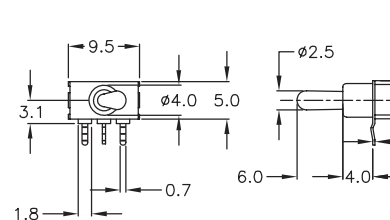
P.C. MOUNTING



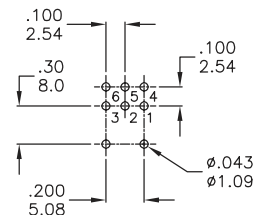
SPDT

Part No. Shown : 2TES1-M6RES

M6



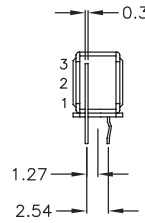
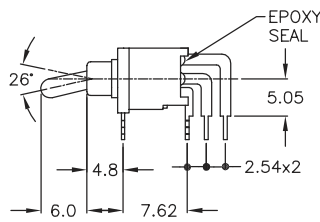
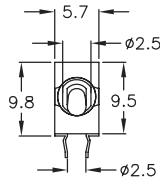
P.C. MOUNTING



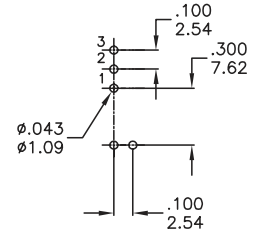
DPDT

Part No. Shown : 2TED1-M7RES

M7



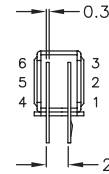
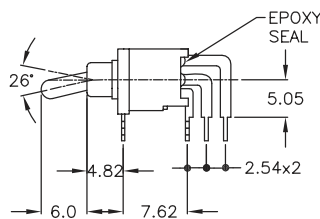
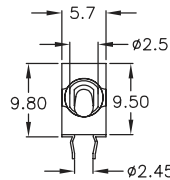
P.C. MOUNTING



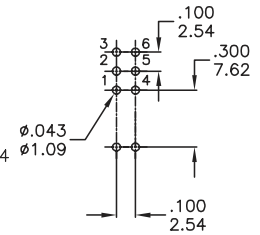
SPDT

Part No. Shown : 2TES1-M7RES

M7



P.C. MOUNTING



DPDT

Part No. Shown : 2TED1-M7RES



SOLDERING PROCESSES

WAVE SOLDERING : Recommended Soldering Temperature: $260 \pm 5^\circ\text{C}$
 Duration of Solder Immersion: 5 ± 1 seconds
 (PCB is 1.6mm in thickness)

SOLDERING : Vapor phase

Temperature Profile

Zone	Room temperature	Time (Sec)
Pre-heat (A)	150°C	Min 120s
Soak (B)	$180^\circ\text{C} \sim 200^\circ\text{C}$	Min 150s
Peak (C)	$200^\circ\text{C} \sim 235^\circ\text{C}$	Min 30s
Peak (D)	$235^\circ\text{C} \sim 260^\circ\text{C}$	Min 40s
Peak (E)	260°C	Max 10s

