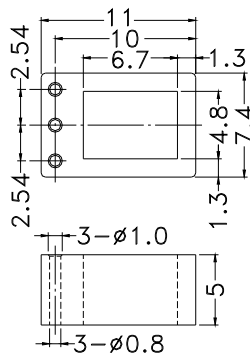
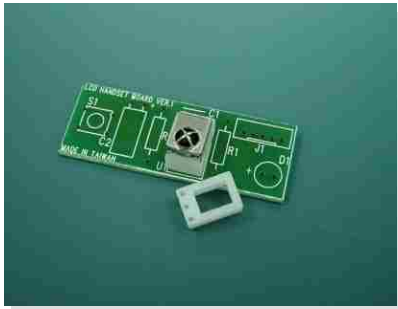


PHOTO TR

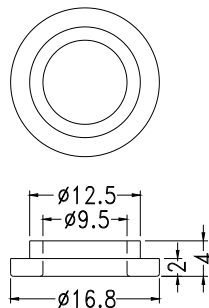
- ┆ MATERIAL:NYLON 66(UL)
- ┆ FLAME CLASS :94V-2
- ┆ COLOR:NATURAL
- ┆ UNIT:mm



PART NO	PACKAGE
YPRCCEA-5	1000

WASHERS

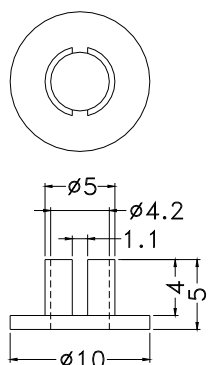
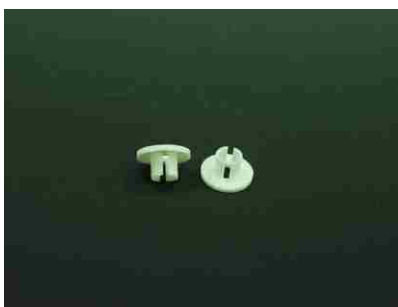
- ┆ MATERIAL:NYLON 66(UL)
- ┆ FLAME CLASS :94V-2
- ┆ COLOR:NATURAL
- ┆ UNIT:mm



PART NO	PACKAGE
YPFUCG-1	1000

WASHER

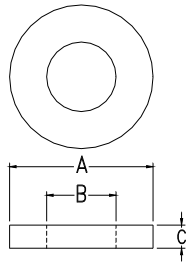
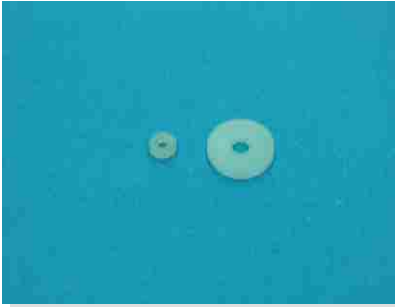
- ┆ MATERIAL:NYLON 66(UL)
- ┆ FLAME CLASS:94V-0
- ┆ COLOR:NATURAL
- ┆ UNIT:mm



PART NO	PACKAGE
YPTWCU-1	2000

WASHER

- ┆ MATERIAL:NYLON 66(UL)
- ┆ YPWSC3-5(6) MATERIAL:PVC
- ┆ UNIT:mm

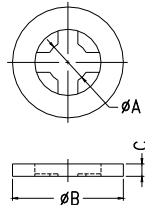


PART NO	A	B	C
YPWSC10-0.8	16.0	10.0	0.8
YPWSC10-1.5	16.0	10.0	1.5
YPWSC10-3	20.7	10.0	3.0
YPWSC10-5	15.0	10.3	5.0
YPWSC13-2	23.0	13.0	2.0
YPWSC16-11-32	16.0	11.4	3.2
YPWSC19.1-0.5	21.8	19.1	0.5
YPWSC2.1-0.8	4.5	2.1	0.8
YPWSC2.1-2	5.0	2.1	2.0
YPWSC2.2-12	3.7	2.2	1.2
YPWSC2.5-0.5	4.5	2.5	0.5
YPWSC2.5-0.5S	4.0	2.5	0.5
YPWSC2.5-10	5.0	2.5	1.1
YPWSC2.5-1	9.0	2.5	1.0
YPWSC2-0.5	6.0	2.5	0.5
YPWSC2-1.5	8.8	2.0	1.5
YPWSC3.5-0.5	7.5	3.5	0.5
YPWSC3.7-0.3	5.6	3.73	0.3
YPWSC3.7-0.5	7.1	3.7	0.5
YPWSC3.8-0.5	6.5	3.8	0.5
YPWSC3-1	7.0	3.0	1.0
YPWSC3-1.5	6.0	3.0	1.5
YPWSC3-10	8.0	3.1	1.0
YPWSC3-15	8.0	3.1	1.5

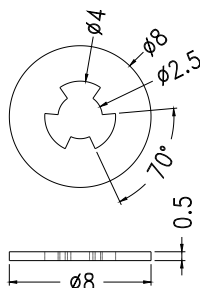
PART NO	A	B	C
YPWSC10-0.8	16.0	10.0	0.8
YPWSC10-1.5	16.0	10.0	1.5
YPWSC10-3	20.7	10.0	3.0
YPWSC10-5	15.0	10.3	5.0
YPWSC13-2	23.0	13.0	2.0
YPWSC-16-11-32	16.0	11.0	3.2
YPWSC19.1-0.5	21.8	19.1	0.5
YPWSC2.1-0.8	4.5	2.1	0.8
YPWSC2.1-2	5.0	2.1	2.0
YPWSC2.2-12	3.7	2.2	1.2
YPWSC2.5-0.5	4.5	2.5	0.5
YPWSC2.5-0.5S	4.5	2.5	0.5
YPWSC2.5-10	5.0	2.5	1.1
YPWSC2.5-1	9.0	2.5	1.0
YPWSC2-0.5	6.0	2.5	0.5
YPWSC2-1.5	8.8	2.0	1.5
YPWSC3.5-0.5	7.5	3.5	0.5
YPWSC3.7-0.3	5.6	3.73	0.3
YPWSC3.7-0.5	7.1	3.7	0.5
YPWSC3.8-0.5	6.5	3.8	0.5
YPWSC3-1	7.0	3.0	1.0
YPWSC3-1.5	6.0	3.0	1.5
YPWSC3-10	8.0	3.1	1.0
YPWSC3-15	8.0	3.1	1.5

SCREW WASHER

- ┆ MATERIAL:NYLON 66(UL)
- ┆ FLAME CLASS:94V-2
- ┆ COLOR:NATURAL
- ┆ UNIT:mm



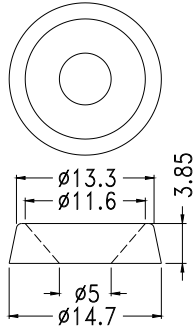
PART NO.	A	B	C	FOR SCREW	PACKAGE
YPKWCS-3	2.5	6.7	0.8	M3	2000
YPKWCS-4	3.3	8.0	1.0	M4	



PART NO	PACKAGE
YPKWCS-3	2000

WASHER

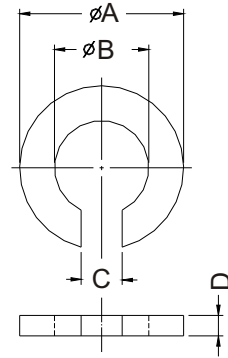
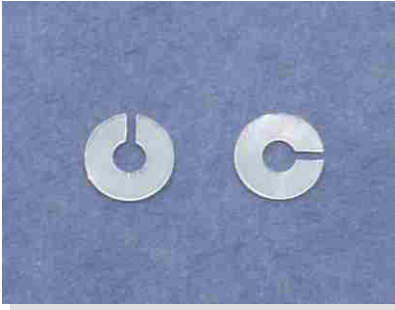
- ┆ MATERIAL: NYLON 66(UL)
- ┆ FLAME CLASS :94V-2
- ┆ COLOR:NATURAL
- ┆ UNIT:mm



PART NO	PACKAGE
YPWSCU-515	2000

WASHER

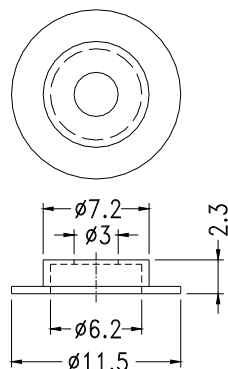
- ┆ MATERIAL: NYLON 66 UL94V-2
(COC2-0.5 MATERIAL=PC)
- ┆ COLOR:NATURAL
- ┆ UNIT:mm



PART NO.	A	B	C	D	PACKAGE
YPCOCC2-0.5	4.0	2.3	1.0	0.5	2000
YPCOCC5-4	8.0	5.0	2.5	4.0	1000

WASHER

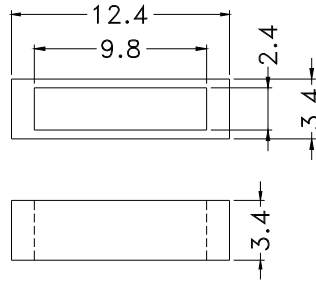
- ┆ MATERIAL: NYLON 66(UL)
- ┆ FLAME CLASS :94V-0
- ┆ COLOR:BLACK
- ┆ UNIT:mm



PART NO	PACKAGE
YPWSCC-1	2000

WASHER

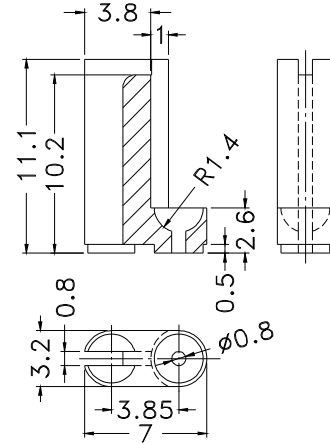
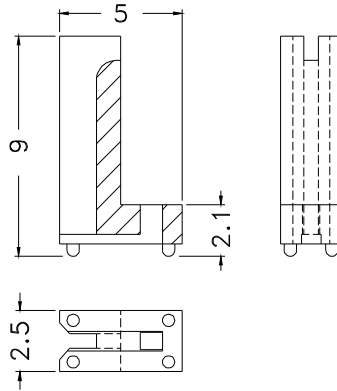
- ┆ MATERIAL: NYLON 66(UL)
- ┆ FLAME CLASS: 94V-2
- ┆ COLOR: NATURAL
- ┆ UNIT: mm



PART NO	PACKAGE
YPSQCCP-3.4	2000

ELECTRIC RESISTANCE HOLDER

- ┆ MATERIAL: PPS(UL)
- ┆ FLAME CLASS: 94V-0
- ┆ COLOR: NATURAL
- ┆ UNIT: mm

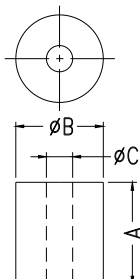


PART NO	PACKAGE
YPRPCCL-9	2000

PART NO	PACKAGE
YPRPCCL-11	2000

WASHER

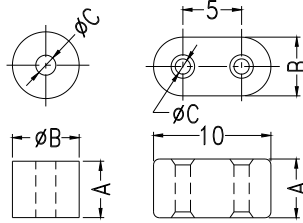
- ┆ MATERIAL: P.B.T (UL)
- ┆ FLAME CLASS: 94V-0
- ┆ COLOR: NATURAL
- ┆ UNIT: mm



PART NO	A	B	C	PACKAGE
YPPWC-1	4.2	4.0	1.3	2000
YPPWC-1A	4.2	4.5	1.8	
YPPWC-2	8.0	4.0	1.3	1000
YPPWC-3	3.0	4.0	1.3	2000
YPPWC-4	3.6	3.5	1.3	
YPPWC-5	2.0	5.0	2.0	
YPPWC-6	2.5	3.2	1.4	

CERAMIC PARTS WASHER

- ┆ MATERIAL: CERAMIC
- ┆ COLOR: WHITE
- ┆ UNIT: mm

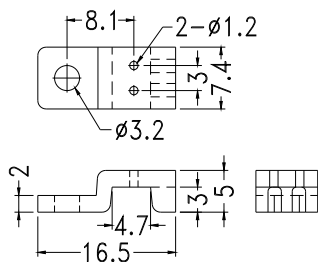


ONLY FOR CHS-6

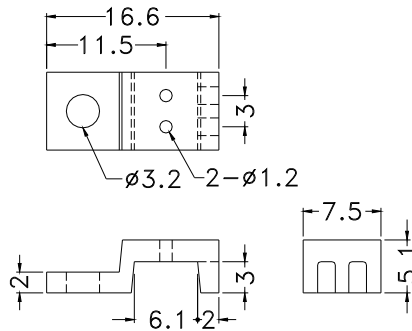
PART NO	A	B	C	PACKAGE
YPCHCS-1	4.5	3.8	1.0	2000
YPCHCS-2	9.0	3.8	1.0	
YPCHCS-3	3.0	4.5	1.8	
YPCHCS-4	4.5	4.5	1.8	
YPCHCS-5	9.0	4.5	1.8	
YPCHCS-6	5.0	5.0	1.3	
YPCHCS-7	6.9	2.6	0.9	
YPCHCS-8	3.1	2.5	1.1	
YPCHCS-9	15.4	4.1	1.9	1000

PARTS HOUSING

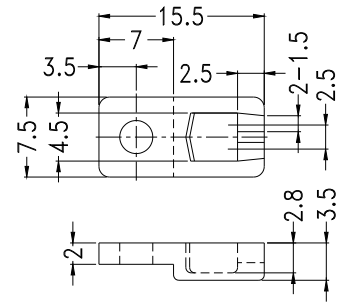
- ┆ MATERIAL: P.B.T(UL)
- ┆ FLAME CLASS: 94V-0
- ┆ COLOR: NATURAL
- ┆ UNIT: mm



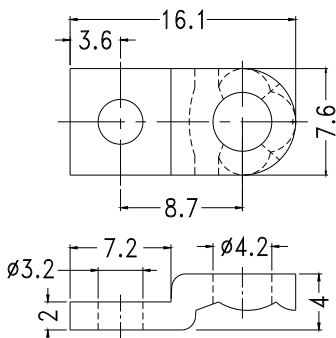
PART NO	PACKAGE
YPPHC-1	1000



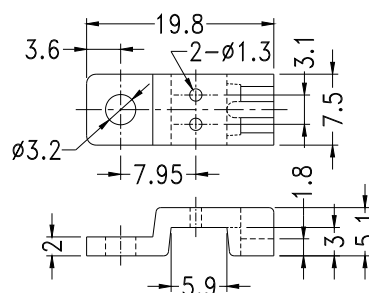
PART NO	PACKAGE
YPPHC-1A	1000



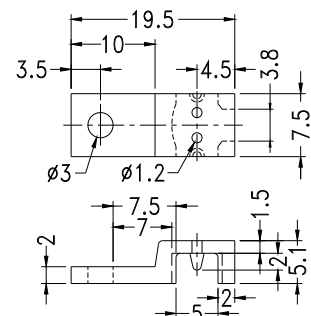
PART NO	PACKAGE
YPPHC-2A	1000



PART NO	PACKAGE
YPPHC-3	1000



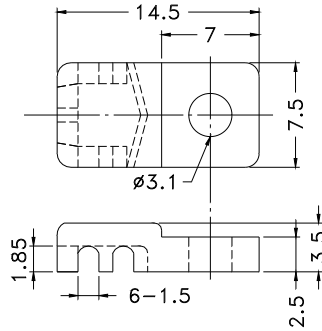
PART NO	PACKAGE
YPPHC-5	1000



PART NO	PACKAGE
YPPHC-7	1000

PARTS HOUSING

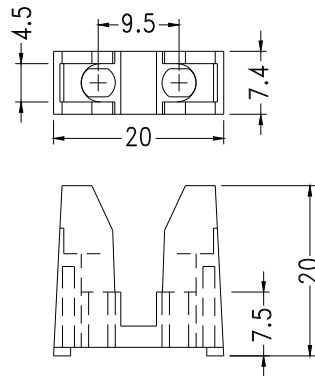
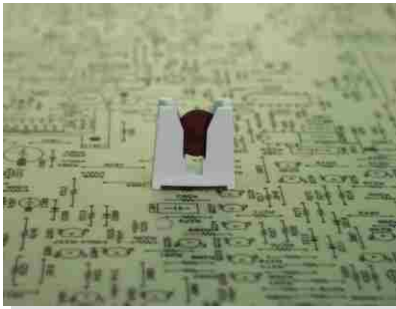
- ┆ MATERIAL:P.B.T(UL)
- ┆ FLAME CLASS:94V-0
- ┆ COLOR:NATURAL
- ┆ UNIT:mm



PART NO	PACKAGE
YPPHC-2	1000

PARTS HOUSING

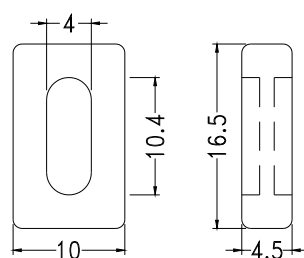
- ┆ MATERIAL:P.B.T(UL)
- ┆ FLAME CLASS:94V-0
- ┆ COLOR:NATURAL
- ┆ UNIT:mm



PART NO	PACKAGE
YPPHCC-1	500

PARTS HOUSING

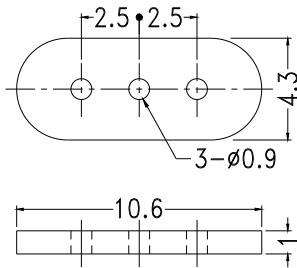
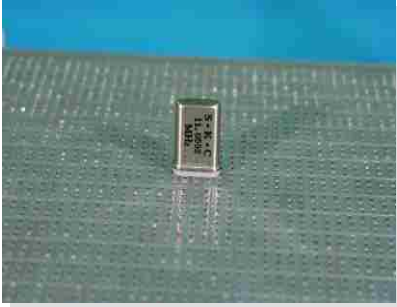
- ┆ MATERIAL:NYLON 66(UL)
- ┆ FLAME CLASS:94V-2
- ┆ COLOR:BLACK
- ┆ UNIT:mm



PART NO	PACKAGE
YPDVCT-1	1000

CRYSTAL WASHER

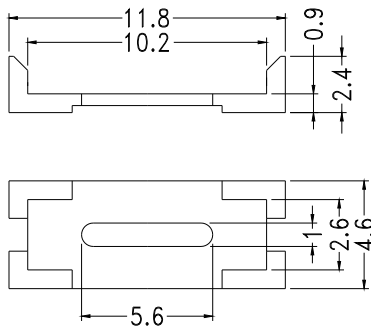
- ┆ MATERIAL:NYLON 66(UL)
- ┆ FLAME CLASS :94V-2
- ┆ COLOR:NATURAL
- ┆ UNIT:mm



PART NO	PACKAGE
YPQWC-1	2000

CRYSTAL WASHER

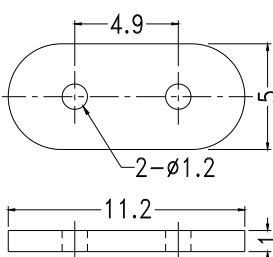
- ┆ MATERIAL:NYLON 66(UL)
- ┆ FLAME CLASS :94V-0
- ┆ COLOR:NATURAL
- ┆ UNIT:mm



PART NO	PACKAGE
YPQWC-2	2000

CRYSTAL WASHER

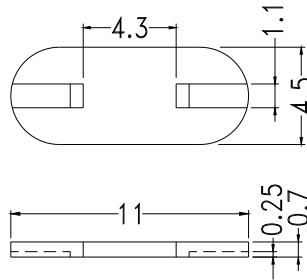
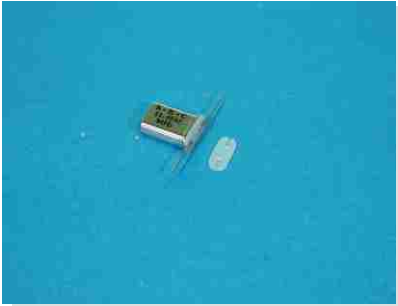
- ┆ MATERIAL:NYLON 66(UL)
- ┆ FLAME CLASS :94V-2
- ┆ COLOR:NATURAL
- ┆ UNIT:mm



PART NO	PACKAGE
YPQWC-3	2000

CRYSTAL WASHER

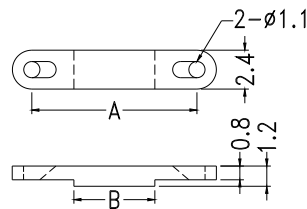
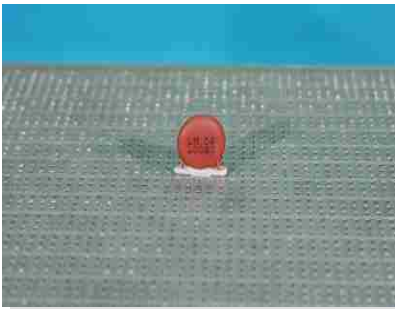
- ┆ MATERIAL: NYLON 66(UL)
- ┆ FLAME CLASS :94V-2
- ┆ COLOR:NATURAL
- ┆ UNIT:mm



PART NO	PACKAGE
YPQWC-4	2000

CAPACITOR WASHER

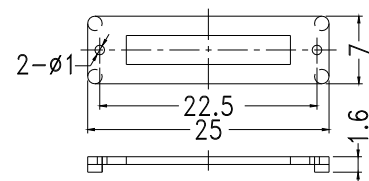
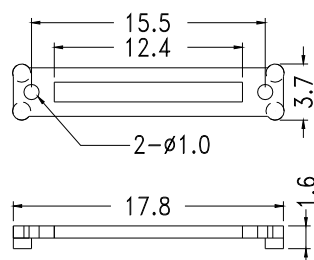
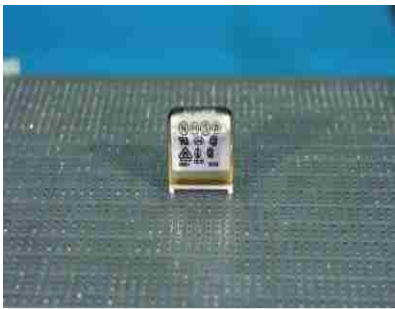
- ┆ MATERIAL: NYLON 66(UL)
- ┆ FLAME CLASS :94V-2
- ┆ COLOR:NATURAL
- ┆ UNIT:mm



PART NO	A	B	PACKAGE
YPCWCT-8	7.6	4.0	2000
YPCWCT-10	10.1	5.0	

CAPACITOR WASHER

- ┆ MATERIAL: NYLON 66(UL)
- ┆ FLAME CLASS :94V-0
- ┆ COLOR:NATURAL
- ┆ UNIT:mm

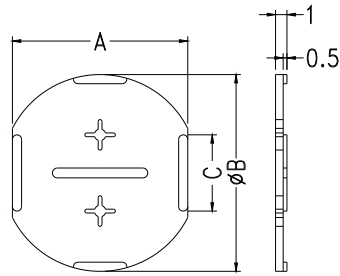


PART NO	PACKAGE
YPCWCL-15	1000

PART NO	PACKAGE
YPCWCL-22	1000

CAPACITOR WASHER

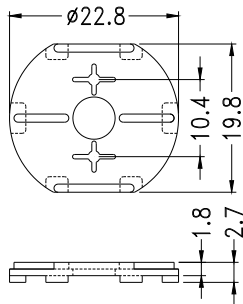
- ┆ MATERIAL: NYLON 66(UL)
- ┆ FLAME CLASS :94V-2
- ┆ COLOR:NATURAL
- ┆ UNIT:mm



PART NO	A	B	C	PACKAGE
YPCWC-16	14.6	16.2	7.5	1000
YPCWC-18	16.4	18.2	7.5	
YPCWC-22	20.0	22.2	10.0	500
YPCWC-25	23.0	25.7	10.0	
YPCWC-30	27.2	30.3	10.0	
YPCWC-35	31.8	35.3	10.0	

CAPACITOR WASHER

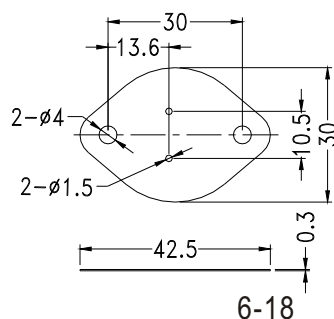
- ┆ MATERIAL: NYLON 66(UL)
- ┆ FLAME CLASS :94V-2
- ┆ COLOR:NATURAL
- ┆ UNIT:mm



PART NO	PACKAGE
YPCWC-1	500

SILICON INSULATOR

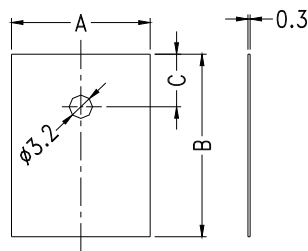
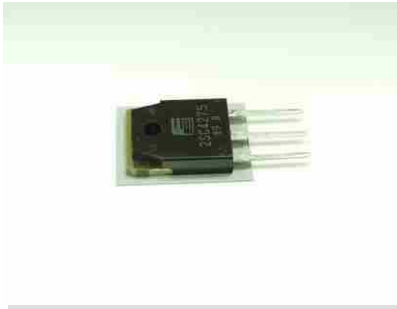
- ┆ MATERIAL: SILICON(UL)
- ┆ FLAME CLASS :94V-0
- ┆ COLOR:GRAY
- ┆ UNIT:mm



PART NO	PACKAGE
YPTOC-3	1000

SILICON INSULATOR

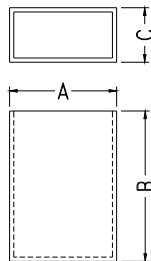
- ┆ MATERIAL: SILICON(UL)
- ┆ FLAME CLASS :94V-0
- ┆ COLOR: GRAY
- ┆ UNIT: mm



PART NO	A	B	C	PACKAGE
YPTOC-3P	19.0	25.0	7.2	1000
YPTOC-220	13.2	19.0	5.0	

SILICON INSULATOR COVER

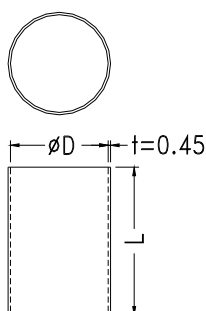
- ┆ MATERIAL: SILICON(UL)
- ┆ FLAME CLASS :94V-0
- ┆ COLOR: GRAY
- ┆ UNIT: mm



PART NO	A	B	C	THICKNESS	PACKAGE
YPSRCT-111758	11.4	16.0	5.8	0.45	500
YPSRCT-182864	18.0	28.5	6.4	0.75	
YPSRCT-203464	20.0	35.0	6.4		

SILICON INSULATOR COVER

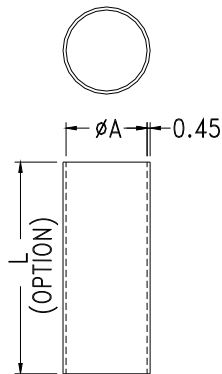
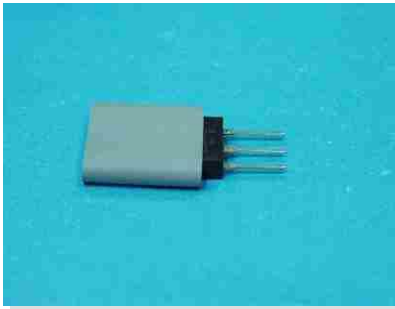
- ┆ MATERIAL: SILICON(UL)
- ┆ FLAME CLASS :94V-0
- ┆ COLOR: GRAY
- ┆ UNIT: mm



PART NO	D	L	PACKAGE
YPSCT-0726	7.8	26.0	500
YPSCT-1615	16.7	15.0	
YPSCT-1828	18.5	28.0	
YPSCT-1925	18.7	25.0	

SILICON INSULATOR TUBE

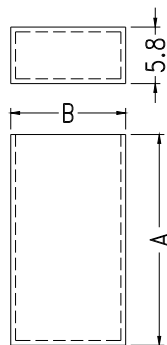
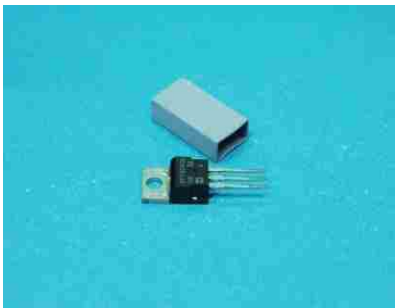
- ┆ MATERIAL: SILICON(UL)
- ┆ FLAME CLASS :94V-0
- ┆ COLOR: GRAY
- ┆ UNIT: mm



PART NO	A
YPSRCT6	6.0
YPSRCT8	8.0
YPSRCT10	10.0
YPSRCT12	12.0
YPSRCT14	14.0
YPSRCT16	16.0
YPSRCT18	18.0
YPSRCT20	20.0

SILICON INSULATOR COVER

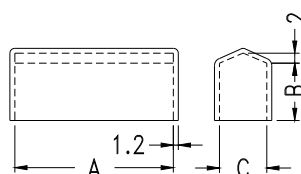
- ┆ MATERIAL: SILICON(UL)
- ┆ FLAME CLASS :94V-0
- ┆ COLOR: GRAY
- ┆ UNIT: mm



PART NO	A	B	THICKNESS	PACKAGE
YPTOC-3PCV	28.5	17.5	0.45	1000
YPTOC-3PCV-A	25.0	18.5		
YPTOC-220CV	21.7	11.5		

FUSE COVER

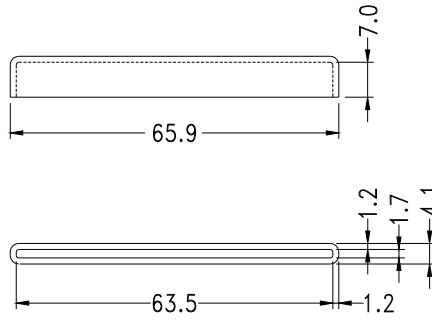
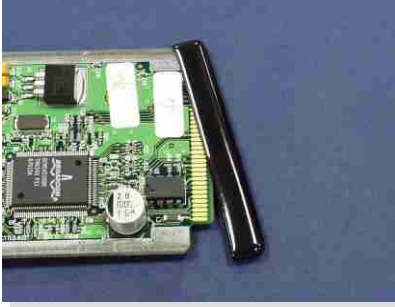
- ┆ MATERIAL: SOFT P.V.C
- ┆ COLOR: NATURAL/BLUE(-°-)
- ┆ UNIT: mm



PART NO	A	B	C	PACKAGE
YPFUCSE-1	20.0	11.0	6.0	1000
YPFUCSE-2	31.8	11.5	9.5	500
YPFUCSE-3	36.1	9.9	8.1	1000

CONNECTOR COVER

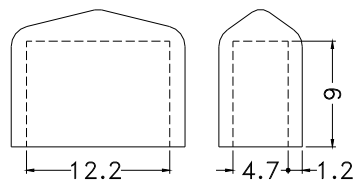
┆ MATERIAL:SOFT P.V.C
 ┆ COLOR:BLACK
 ┆ UNIT:mm



PART NO	PACKAGE
YPFUCSE-5	1000

FUSE COVER

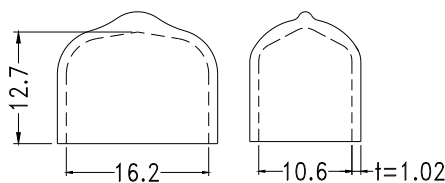
┆ MATERIAL:SOFT P.V.C
 ┆ COLOR:BLACK
 ┆ UNIT:mm



PART NO	PACKAGE
YPFHC-13	1000

CONNECTOR COVER

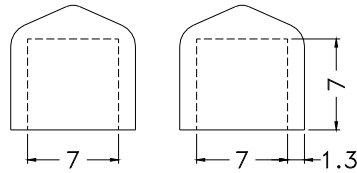
┆ MATERIAL:SOFT P.V.C
 ┆ COLOR:BLUE
 ┆ UNIT:mm



PART NO	PACKAGE
YPFHC-17	1000

PARTS COVER

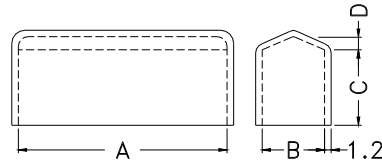
- ┆ MATERIAL:SOFT P.V.C
- ┆ COLOR:BLACK
- ┆ UNIT:mm



PART NO	PACKAGE
YPVCC0707008B	1000

FUSE COVER

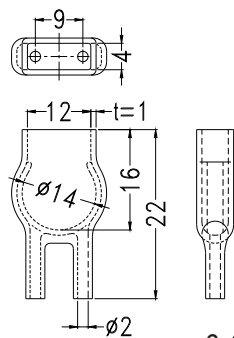
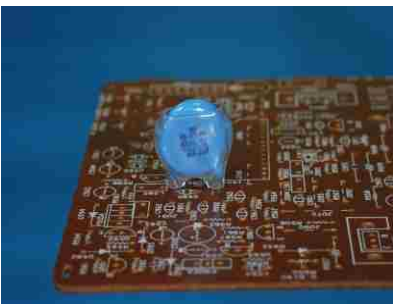
- ┆ MATERIAL:SOFT P.V.C
- ┆ UNIT:mm□



PART NO.	A	B	C	D	COLOR	PACKAGE
YPFHC-1	20.0	6.0	10.5	1.0	BLUE	1000
YPFHC-1L	22.0	6.0	10.5	1.0		
YPFHC-1S	18.0	5.3	10.0	1.0		
YPFHC-3A	31.0	8.1	11.5	1.0		
YPFHC-3	31.8	9.5	11.5	2.0		

CAPACITOR COVER

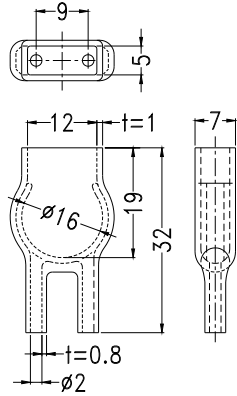
- ┆ MATERIAL:SOFT P.V.C
- ┆ COLOR:NATURAL/BLUE(-°-)
- ┆ UNIT:mm



PART NO	PACKAGE
YPHUC-14	1000

CAPACITOR COVER

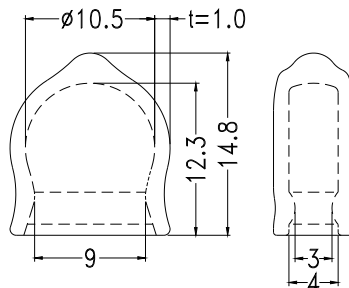
- ┆ MATERIAL:SOFT P.V.C
- ┆ COLOR:NATURAL/BLUE
- ┆ UNIT:mm



PART NO	PACKAGE
YPHUC-16	1000

CAPACITOR COVER

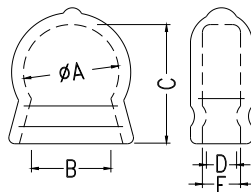
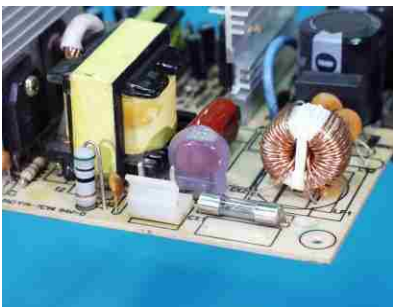
- ┆ MATERIAL:SOFT P.V.C
- ┆ COLOR:NATURAL/BLUE
- ┆ UNIT:mm



PART NO	PACKAGE
YPHUC-10	1000

CAPACITOR COVER

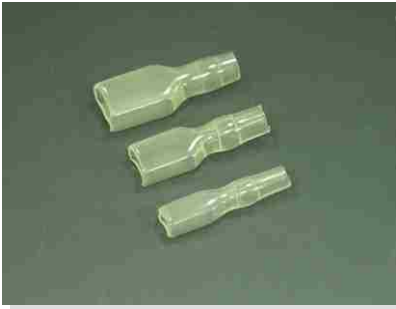
- ┆ MATERIAL:SOFT P.V.C
- ┆ COLOR:NATURAL/BLUE
- ┆ UNIT:mm



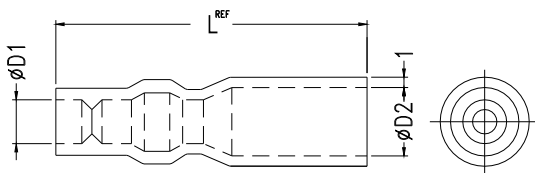
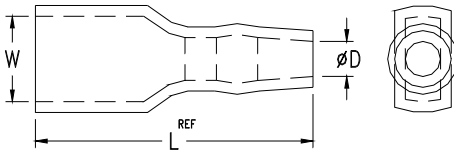
PART NO	A	B	C	D	E	MATERIAL	COLOR
YPHUC-8	8.5	7.5	10.0	3.0	3.0	SOFT P.V.C	NATURAL
YPHUC-8(BU)	8.5	7.5	10.0	3.0	3.0	SOFT P.V.C	
YPHUC-12	12.0	10.0	15.0	3.8	4.8	SOFT P.V.C	NATURAL
YPHUC-12(BU)	12.0	10.0	15.0	3.8	4.8	SOFT P.V.C	

TERMINAL SOFT SLEEVES

- ┆ MATERIAL:SOFT P.V.C
- ┆ COLOR:NATURAL/BLUE(-°°)
- ┆ UNIT:mm



FLAT INSULATING SLEEVES



SERIES-110					
PART NO	W	D	L	WIRE SIZE(O.D)	PACKAGE
YPSC4020	4.0	2.0	22.0	2.0	1000
YPSC4025	4.0	2.5	22.0	2.5	
YPSC4028	4.0	2.8	22.0	2.5	
YPSC4030	4.0	3.0	22.0	3.0	
YPSC4035	4.0	3.5	22.0	3.5	

SERIES-187					
PART NO	W	D	L	WIRE SIZE(O.D)	PACKAGE
YPSC5825	5.8	2.5	22.0	2.5	1000
YPSC5830	5.8	3.0	22.0	3.0	
YPSC5835	5.8	3.5	22.0	3.5	
YPSC5840	5.8	4.0	22.0	4.0	

SERIES-205					
PART NO	W	D	L	WIRE SIZE(O.D)	PACKAGE
YPSC6525	6.5	2.5	24.0	2.5	1000
YPSC6530	6.5	3.0	24.0	3.0	
YPSC6535	6.5	3.5	24.0	3.5	
YPSC6540	6.5	4.0	24.0	4.0	

SERIES-250					
PART NO	W	D	L	WIRE SIZE(O.D)	PACKAGE
YPSC8030	7.8	3.0	26.0	3.0	1000
YPSC8035	7.8	3.5	27.0	3.5	
YPSC8040	8.0	4.1	27.0	4.0	
YPSC8045	8.0	4.5	27.0	4.5	
YPSC8050	7.8	5.0	27.0	5.0	

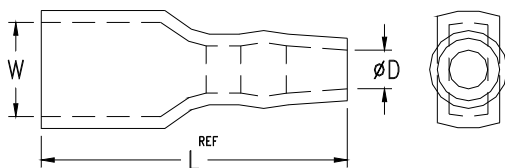
PART NO	D1	D2	L	PACKAGE
YPRC5025	2.5	5.0	33.0	1000
YPRC5028	2.8	5.0	33.0	
YPRC5030	3.1	5.0	33.0	
YPRC5035	3.5	5.2	33.0	
YPRC4028	2.8	5.0	32.0	

TERMINAL SOFT SLEEVES

- ┆ MATERIAL:SOFT P.V.C
- ┆ COLOR:NATURAL/BLUE
- ┆ UNIT:mm



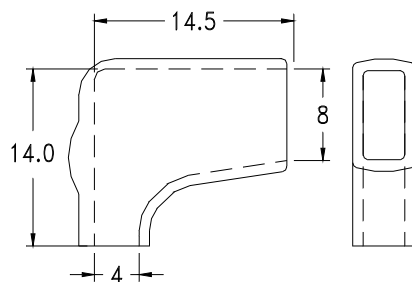
FLAT INSULATING SLEEVES



SERIES-110					
PART NO	W	D	L	WIRE SIZE(O.D)	PACKAGE
64020	4.0	2.0	24.0	2.0	1000
64025	4.0	2.5	24.0	2.5	
64030	4.0	3.0	24.0	3.0	
64035	4.0	3.5	24.0	3.5	
SERIES-187					
PART NO	W	D	L	WIRE SIZE(O.D)	PACKAGE
65825	5.8	2.5	23.0	2.5	1000
65830	5.8	3.0	23.0	3.0	
65835	5.8	3.5	23.0	3.5	
65840	5.8	4.0	23.0	4.0	
SERIES-205					
PART NO	W	D	L	WIRE SIZE(O.D)	PACKAGE
66525	6.5	2.5	24.0	2.5	1000
66530	6.5	3.0	24.0	3.0	
66535	6.5	3.5	24.0	3.5	
66540	6.5	4.0	24.0	4.0	
SERIES-250					
PART NO	W	D	L	WIRE SIZE(O.D)	PACKAGE
68030	8.0	3.0	26.0	3.0	1000
68032	8.0	3.2	26.0	3.2	
68035	8.0	3.5	26.0	3.5	
68040	8.0	4.0	26.0	4.0	
68045	8.0	4.5	26.0	4.5	
68050	8.0	5.0	26.0	5.0	

TERMINAL SOFT SLEEVES

- ┆ MATERIAL:SOFT P.V.C
- ┆ COLOR:NATURAL
- ┆ UNIT:mm

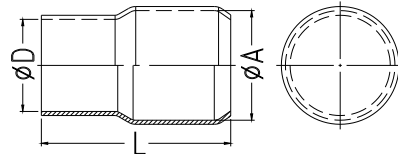


WIRE SIZE(O.D): ϕ 4.0

PART NO	PACKAGE
610301	1000

TERMINAL SOFT SLEEVES

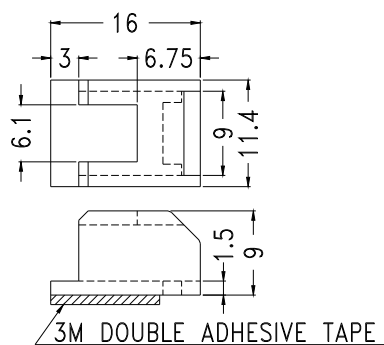
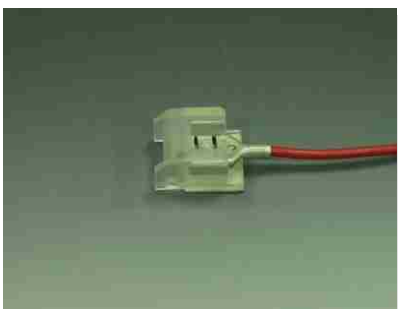
- ┆ MATERIAL:SOFT P.V.C
- ┆ COLOR:RED/WHITE/BLACK/BLUE/
YELLOW/GREEN
- ┆ UNIT:mm



PART NO.	WIRE mm ²	A	D	L	PACKAGE
YPVC-1.25	1.25	3.3	3.1	15.0	100
YPVC-2	2.00	4.5	3.7	16.0	
YPVC-3.5	3.50	5.7	4.1	18.0	
YPVC-5.5	5.50	5.7	5.2	20.0	
YPVC-8	8.00	7.2	6.2	21.0	
YPVC-14	14.0	10.0	8.0	28.0	
YPVC-22	22.0	12.0	9.5	29.0	
YPVC-38	38.0	14.0	11.8	34.0	
YPVC-60	60.0	17.0	13.9	42.0	
YPVC-70	70.0	17.9	15.1	45.0	
YPVC-80	80.0	19.5	16.0	46.0	50
YPVC-100	100	22.0	18.0	55.0	
YPVC-125	125	24.4	20.0	60.0	
YPVC-150	150	26.0	22.0	65.0	
YPVC-185	185	29.0	24.0	66.7	
YPVC-200	200	32.2	24.0	69.0	
YPVC-250	250	37.5	26.5	75.0	
YPVC-325	325	37.5	30.0	75.0	
YPVC-400	400	45.1	37.5	83.0	
YPVC-500	500	48.2	40.2	85.0	
YPVC-630	630	53.8	45.2	93.0	

TERMINAL HOUSING

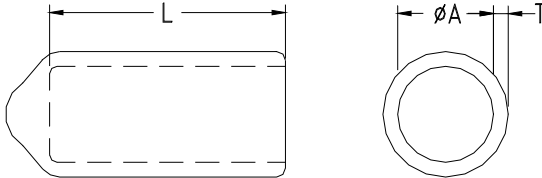
- ┆ MATERIAL:PC (UL)
- ┆ FLAME CLASS:94YPVC-2
- ┆ COLOR:NATURAL
- ┆ UNIT:mm



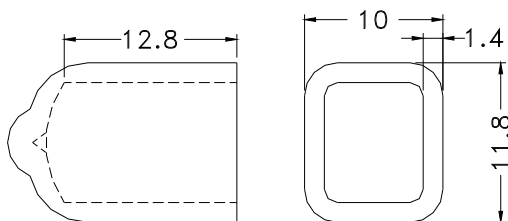
PART NO	PACKAGE
YPPCCTT-1	1000

YPVCCP CAP

- ┆ MATERIAL:SOFT P.V.C
- ┆ COLOR:NATURAL/RED/BLACK/
YELLOW/GREEN/BLUE/WHITE
- ┆ UNIT:mm



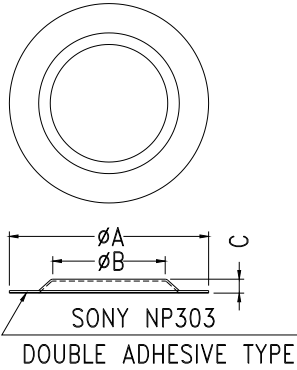
PART NO	A	L	T	PACKAGE
YPVCCP02012	2.0	12.0	0.8	1000
YPVCCP02609	2.6	9.0	0.8	
YPVCCP02655	2.6	5.5	0.8	
YPVCCP02608	2.6	8.0	0.8	
YPVCCP03210	3.2	10.0	0.8	
YPVCCP03213	3.2	13.0	0.8	
YPVCCP04006	4.0	6.0	0.8	
YPVCCP04008	4.0	8.0	0.8	
YPVCCP04032	4.0	32.0	0.8	
YPVCCP04809	4.8	9.0	1.0	
YPVCCP04813	4.8	13.0	0.8	
YPVCCP05710	5.7	10.0	1.0	
YPVCCP05708	5.7	8.0	1.0	
YPVCCP05713	5.7	13.0	1.0	
YPVCCP06008	6.0	8.0	1.0	
YPVCCP06012	6.0	12.0	1.0	
YPVCCP06313	6.3	13.0	1.0	
YPVCCP06513	6.5	13.0	1.0	
YPVCCP07013	7.0	13.0	1.0	
YPVCCP07020	7.0	20.0	1.0	
YPVCCP07608	7.6	8.0	1.0	
YPVCCP08010	8.0	10.0	1.0	
YPVCCP08509	8.5	9.0	1.0	
YPVCCP08515	8.5	15.0	1.0	
YPVCCP09516	9.5	16.0	1.0	
YPVCCP10020	10.0	20.0	1.2	
YPVCCP11420	11.4	20.0	1.2	
YPVCCP12016	12.0	16.0	1.2	
YPVCCP14035	14.0	35.0	1.2	
YPVCCP15014	15.0	14.0	1.2	
YPVCCP17813	17.8	13.0	1.2	
YPVCCP22016	22.0	16.0	1.2	
				500



PART NO	PACKAGE
YPVCC907413	500

INSULATED CAP

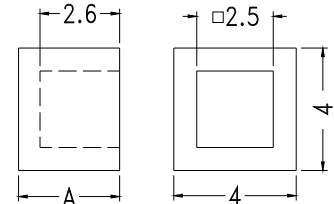
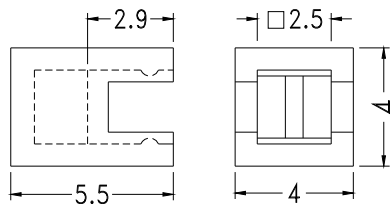
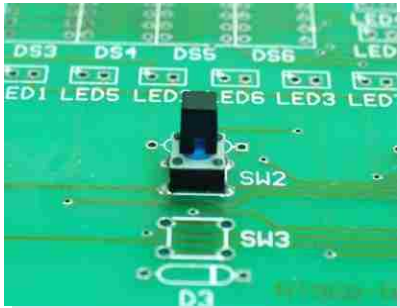
- ┆ MATERIAL:PC FILM(UL)
- ┆ FLAME CLASS:94V-0
- ┆ COLOR:BLACK
- ┆ THICKNESS:0.3
- ┆ UNIT:mm



PART NO	A	B	C	PACKAGE
YPSCCD-1	24.0	15.0	2.0	1000
YPSCCD-2	31.5	18.0	2.2	500
YPSCCD-3	32.0	22.0		
YPSCCD-4	37.0			

TACT SWITCH CAP

- ┆ MATERIAL:ABS(UL)
- ┆ FLAME CLASS:94HB
- ┆ COLOR:BLACK
- ┆ UNIT:mm

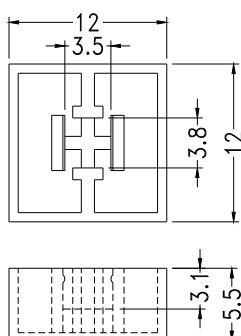
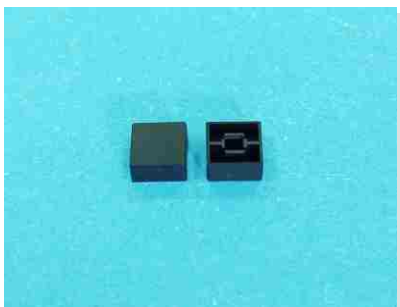


PART NO	PACKAGE
YPTSCC-1	1000

PART NO.	A	PACKAGE
YPTSCC-2	3.3	2000
YPTSCC-2A	4.0	

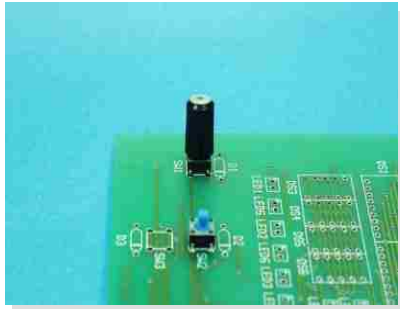
TACT SWITCH CAP

- ┆ MATERIAL:ABS(UL)
- ┆ FLAME CLASS:94HB
- ┆ COLOR:BLACK
- ┆ UNIT:mm

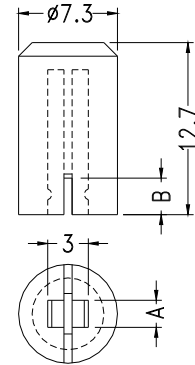
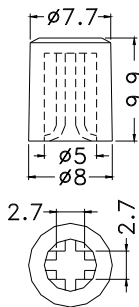


PART NO	PACKAGE
YPTSCC-3	1000

TACT SWITCH CAP



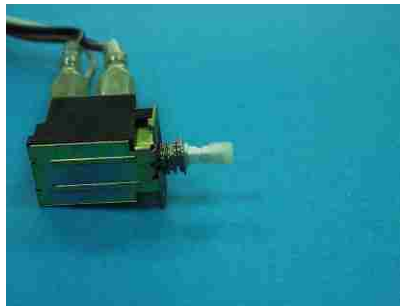
- ┆ MATERIAL:ABS(UL)
- ┆ MATERIAL:┆ TSC-6=NYLON 66(UL)
- ┆ FLAME CLASS:94HB/┆ YPTSCC-6=94V-2
- ┆ COLOR:BLACK
- ┆ UNIT:mm



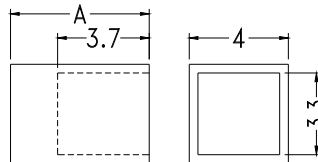
PART NO	PACKAGE
YPTSCC-6	1000

PART NO	A	B	PACKAGE
YPTSCC-4	2.0	3.0	1000
YPTSCC-5	3.0	4.2	

TACT SWITCH CAP

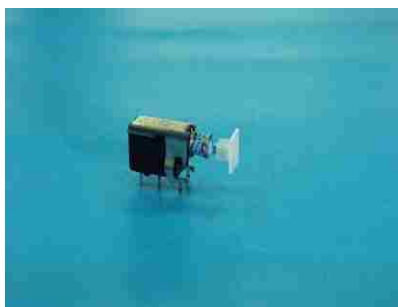


- ┆ MATERIAL:NYLON 66(UL)
- ┆ FLAME CLASS:94V-2
- ┆ COLOR:NATURAL
- ┆ UNIT:mm

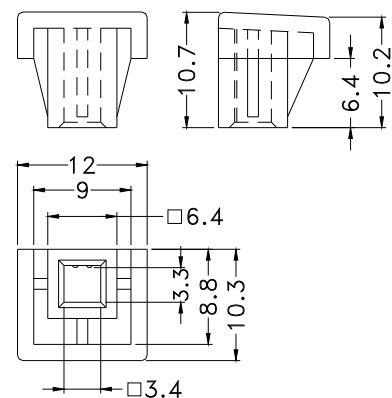
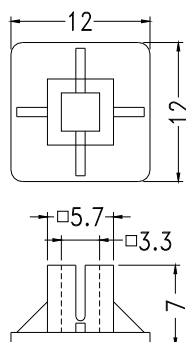


PART NO	A	PACKAGE
YPSWCC-1	5.6	2000
YPSWCC-2	4.7	

SWITCH COVER



- ┆ MATERIAL:NYLON 66(UL)
- ┆ MATERIAL:┆ SWCL-10=ABS(UL)
- ┆ FLAME CLASS:94V-2/┆ SWCL-10=94V-0
- ┆ COLOR:NATURAL
- ┆ UNIT:mm

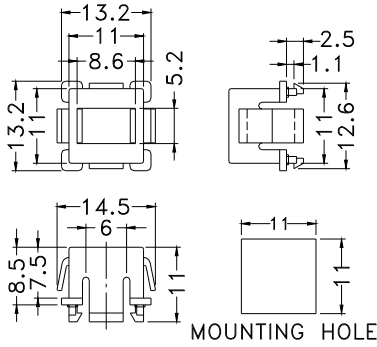


PART NO	PACKAGE
YPSWCCL-7	1000

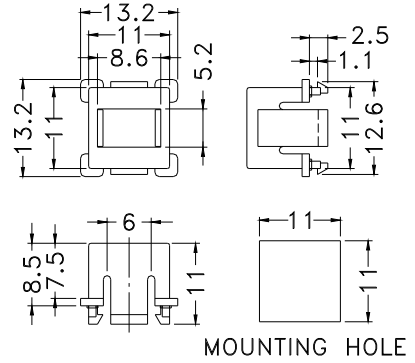
PART NO	PACKAGE
YPSWCCL-10	1000

TACT SWITCH HOLDER

- ┆ MATERIAL:ABS(UL)
- ┆ FLAME CLASS:94HB
- ┆ COLOR:COMPUTER
- ┆ UNIT:mm



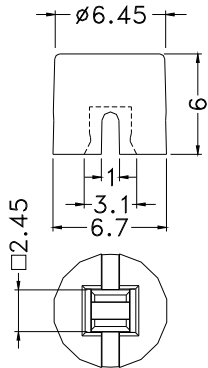
PART NO	PACKAGE
YPTSCC-7	1000



PART NO	PACKAGE
YPTSCC-7Y	1000

TACT SWITCH CAP

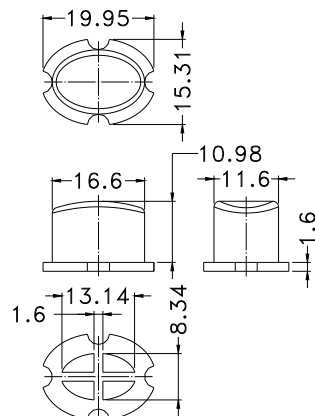
- ┆ MATERIAL:NYLON 66(UL)
- ┆ FLAME CLASS:94V-2
- ┆ COLOR:BLACK
- ┆ UNIT:mm



PART NO	PACKAGE
YPTSCC-8	1000

SWITCH COVER

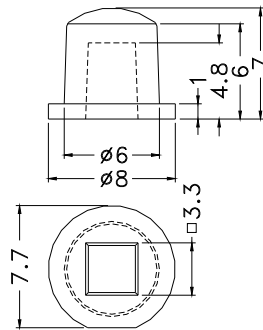
- ┆ MATERIAL:ABS(UL)
- ┆ FLAME CLASS:94V-0
- ┆ COLOR:GRAY
- ┆ UNIT:mm



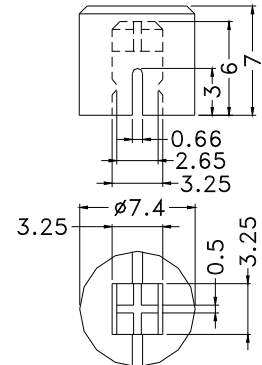
PART NO	PACKAGE
YPTSCC-9	1000

TACT SWITCH CAP

- ┆ MATERIAL:ABS(UL)
- ┆ FLAME CLASS:94-HB
- ┆ COLOR:NATURAL
- ┆ UNIT:mm



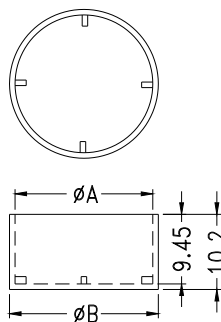
PART NO	PACKAGE
TSC-11	1000



PART NO	PACKAGE
TSC-10	1000

CAPACITOR COVER

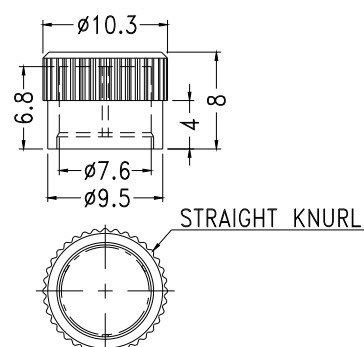
- ┆ MATERIAL:NYLON(UL)
- ┆ FLAME CLASS:94V-2
- ┆ COLOR:NATURAL
- ┆ UNIT:mm



PART NO	A	B	PACKAGE
BCC-16	16.7	18.2	500
BCC-18	18.7	20.2	

CONNECTOR COVER

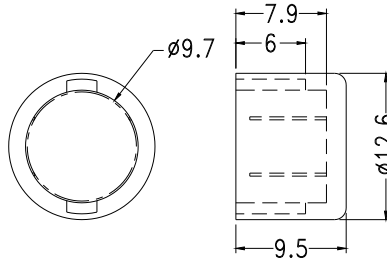
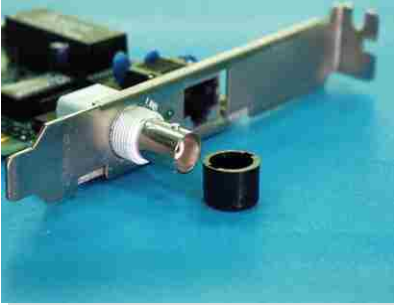
- ┆ MATERIAL:PE
- ┆ COLOR:NATURAL
- ┆ UNIT:mm



PART NO	PACKAGE
KPS-4	1000

CONNECTOR COVER

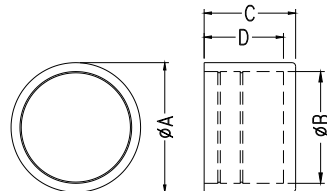
- ┆ MATERIAL:PE
- ┆ COLOR:GRAY/BLACK
- ┆ UNIT:mm



PART NO	PACKAGE
YPBNC-2	1000

CONNECTOR COVER

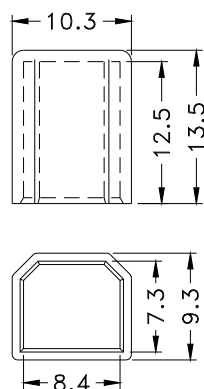
- ┆ MATERIAL:PE
- ┆ COLOR:NATURAL
- ┆ UNIT:mm



PART NO	A	B	C	D	PACKAGE
YPKPCS-1	15.8	13.4	11.2	10.0	500
YPKPCS-2	10.7	9.0	9.6	8.6	1000
YPKPCS-3	10.3	8.4	8.0	7.0	

CONNECTOR COVER

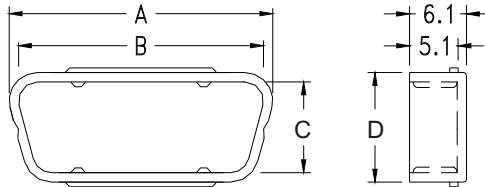
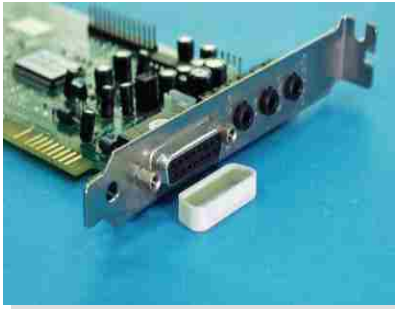
- ┆ MATERIAL:PE
- ┆ COLOR:NATURAL
- ┆ UNIT:mm



PART NO	PACKAGE
YPKPCS-5	1000

D.TYPE CONNECTOR COVER

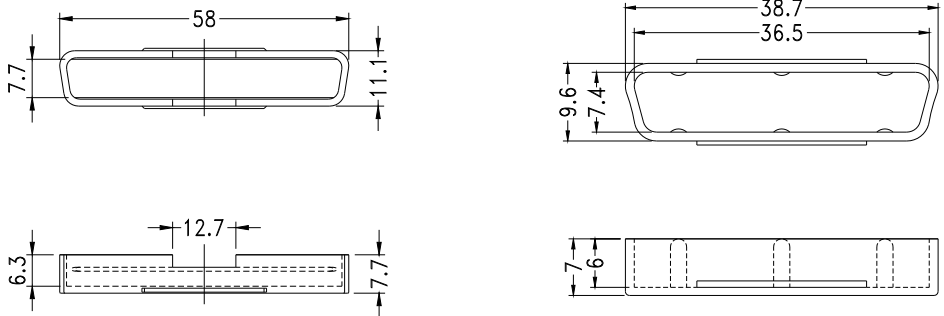
┆ MATERIAL:PE
 ┆ COLOR:COMPUTER/BLACK/NATURAL
 ┆ UNIT:mm



PART NO	A	B	C	D	PACKAGE
YPDTCC-9F	18.5	16.5	7.8	10.2	1000
YPDTCC-15F	26.8	24.8	7.8	10.2	500
YPDTCC-25F	40.6	38.6	7.8	10.2	
YPDTCC-9M	20.0	18.0	9.4	11.8	1000
YPDTCC-15M	28.2	26.4	9.4	11.8	500
YPDTCC-25M	42.0	40.0	9.4	11.8	

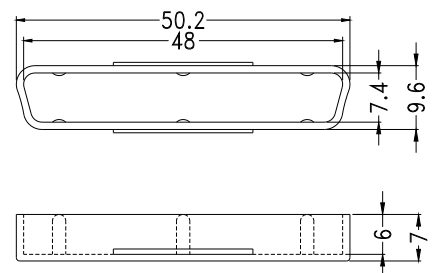
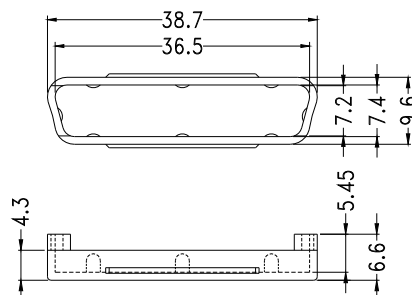
D.TYPE CONNECTOR COVER

┆ MATERIAL:PE
 ┆ COLOR:COMPUTER/BLACK/NATURAL
 ┆ UNIT:mm



PART NO	PACKAGE
YPDTCC-37M	500

PART NO	PACKAGE
YPDTCC-50M	500

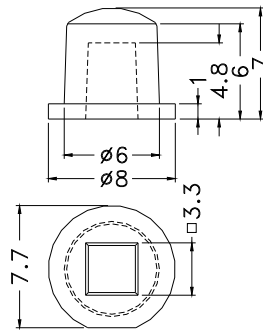


PART NO	PACKAGE
YPDTCC-50S	500

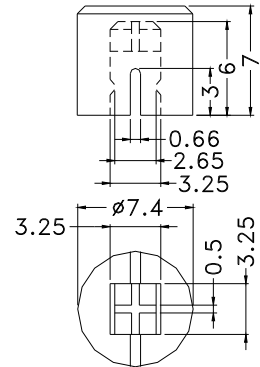
PART NO	PACKAGE
YPDTCC-68	500

TACT SWITCH CAP

- ┆ MATERIAL:ABS(UL)
- ┆ FLAME CLASS:94-HB
- ┆ COLOR:NATURAL
- ┆ UNIT:mm



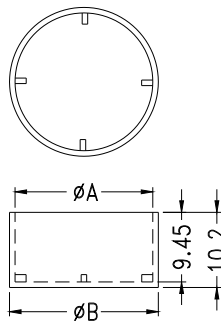
PART NO	PACKAGE
TSC-11	1000



PART NO	PACKAGE
TSC-10	1000

CAPACITOR COVER

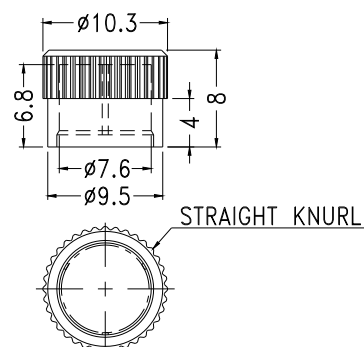
- ┆ MATERIAL:NYLON(UL)
- ┆ FLAME CLASS:94V-2
- ┆ COLOR:NATURAL
- ┆ UNIT:mm



PART NO	A	B	PACKAGE
BCC-16	16.7	18.2	500
BCC-18	18.7	20.2	

CONNECTOR COVER

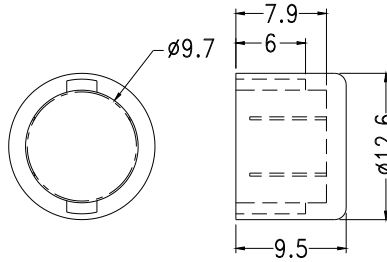
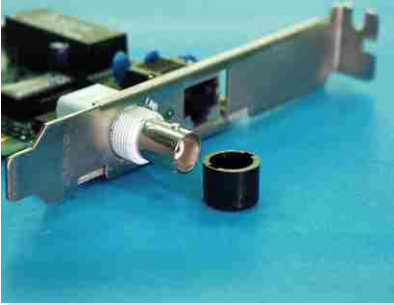
- ┆ MATERIAL:PE
- ┆ COLOR:NATURAL
- ┆ UNIT:mm



PART NO	PACKAGE
KPS-4	1000

CONNECTOR COVER

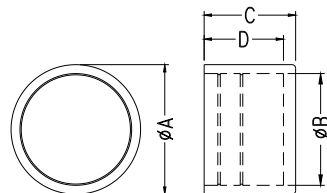
- ┆ MATERIAL:PE
- ┆ COLOR:GRAY/BLACK
- ┆ UNIT:mm



PART NO	PACKAGE
YPBNC-2	1000

CONNECTOR COVER

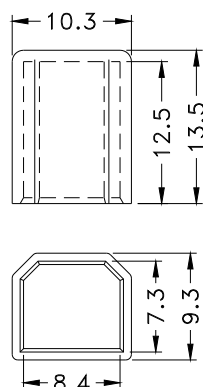
- ┆ MATERIAL:PE
- ┆ COLOR:NATURAL
- ┆ UNIT:mm



PART NO	A	B	C	D	PACKAGE
YPKPCS-1	15.8	13.4	11.2	10.0	500
YPKPCS-2	10.7	9.0	9.6	8.6	1000
YPKPCS-3	10.3	8.4	8.0	7.0	

CONNECTOR COVER

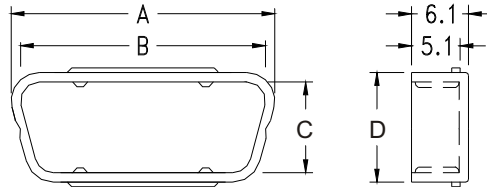
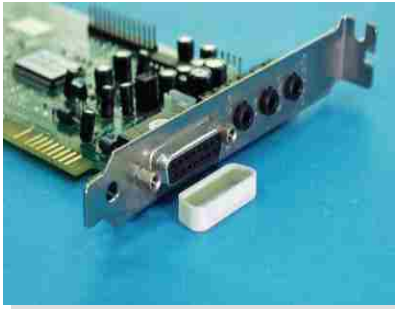
- ┆ MATERIAL:PE
- ┆ COLOR:NATURAL
- ┆ UNIT:mm



PART NO	PACKAGE
YPKPCS-5	1000

D.TYPE CONNECTOR COVER

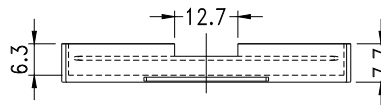
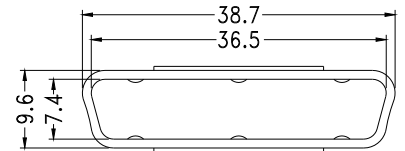
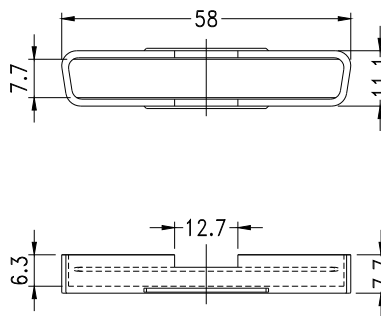
┆ MATERIAL:PE
 ┆ COLOR:COMPUTER/BLACK/NATURAL
 ┆ UNIT:mm



PART NO	A	B	C	D	PACKAGE
YPDTCC-9F	18.5	16.5	7.8	10.2	1000
YPDTCC-15F	26.8	24.8	7.8	10.2	500
YPDTCC-25F	40.6	38.6	7.8	10.2	
YPDTCC-9M	20.0	18.0	9.4	11.8	1000
YPDTCC-15M	28.2	26.4	9.4	11.8	500
YPDTCC-25M	42.0	40.0	9.4	11.8	

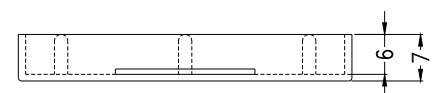
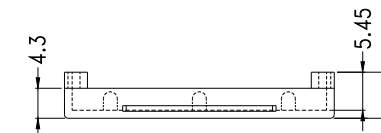
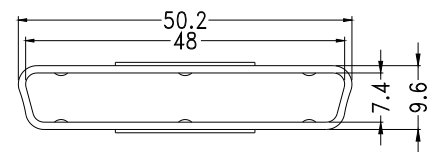
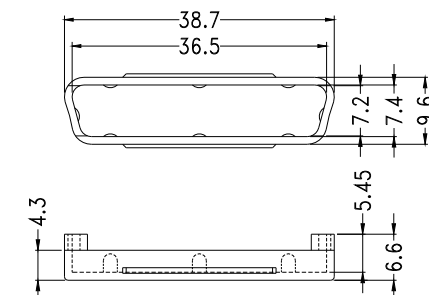
D.TYPE CONNECTOR COVER

┆ MATERIAL:PE
 ┆ COLOR:COMPUTER/BLACK/NATURAL
 ┆ UNIT:mm



PART NO	PACKAGE
YPDTCC-37M	500

PART NO	PACKAGE
YPDTCC-50M	500



PART NO	PACKAGE
YPDTCC-50S	500

PART NO	PACKAGE
YPDTCC-68	500