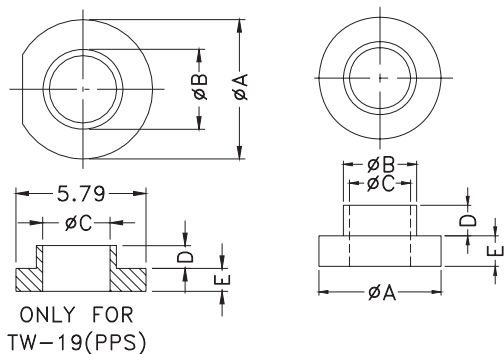


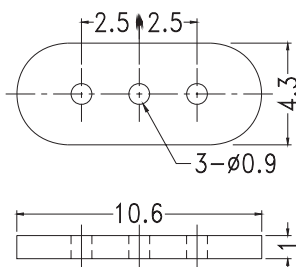
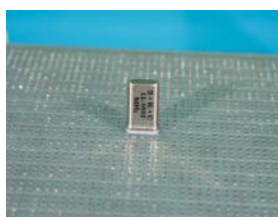
# Transistors Washers & Silicon Insulators



- "#"=MATERIAL:P.B.T V-0 or N66 V-2 AVAILABLE
- "\*" =MATERIAL:N 66 V-2 AVAILABLE ONLY
- OTHER ITEMS=MATERIAL:P.B.T, N46,PPS, N66V-0,N66V-2 AVAILABLE
- COLOR:NATURAL
- UNIT:mm



PART NO	A	B	C	D	E		PACKAGE
YPTWC-1	6.0	3.6	3.0	1.5	1.5	TO-220	2000
YPTWC-2	6.2	3.5	3.0	3.0	1.5		
YPTWC-3	6.2	3.5	3.0	2.5	2.0		
YPTWC-4	6.0	3.5	3.0	2.0	2.0		
YPTWC-5	6.2	3.5	2.9	1.2	1.0		
YPTWC-6	6.2	3.5	2.9	1.4	1.2		
* YPTWC-7	8.0	3.8	3.1	2.8	1.2	T0-3	
#YPTWC-8	8.0	3.8	3.1	1.2	1.2		
* YPTWC-9	10.0	6.0	5.0	5.0	1.0	WASHERS	1000
* YPTWC-10	10.0	5.0	4.0	4.0	1.0		
* YPTWC-11	9.5	6.3	4.5	1.2	1.2		
* YPTWC-12	9.5	6.3	4.1	0.8	1.7		
* YPTWC-14	9.9	8.3	6.5	1.5	1.0	TO-220	2000
YPTWC-15	6.2	3.6	3.0	2.4	1.9		
YPTWC-16	6.1	3.5	2.9	1.6	1.4		
YPTWC-17	6.1	3.55	3.0	1.5	2.0		
YPTWC-18	6.35	5.15	3.5	1.6	0.6		
YPTWC-19	6.22	3.56	3.02	1.02	1.02		
YPTWC-20	6.5	3.5	2.95	4.0	0.9	WASHERS	
YPTWC-21	7.0	5.0	3.0	5.8	2.0		
YPTWC-22	11.9	7.9	4.0	3.0	2.6		
YPTWC-23	7.1	5.0	3.0	2.3	2.0		
YPTWC-24	6.35	3.5	3.0	2.0	1.2		
YPTWC-25	7.93	4.83	3.05	1.15	1.15		
YPTWC-26	6.0	3.7	3.0	5.2	1.0		
YPTWC-27	6.0	3.55	2.95	1.4	1.4		
YPTWC-29	14.0	7.5	6.0	1.8	1.2		
* YPTWC-30	14.0	9.8	6.6	1.7	0.9		
* YPTWC-31	16.0	11.4	10.0	0.8	0.7		
* YPTWC-33	6.0	3.5	2.5	2.3	5.0		
* YPTWC-34	6.0	3.5	2.5	11.0	5.0		
* YPTWC-35	6.0	3.55	2.95	1.2	1.3		
* YPTWC-36	15.7	9.7	4.5	6.5	5.0		
* YPTWC-37	6.0	3.55	2.95	3.2	2.0		
* YPTWC-38	6.1	3.5	2.95	1.5	1.1		



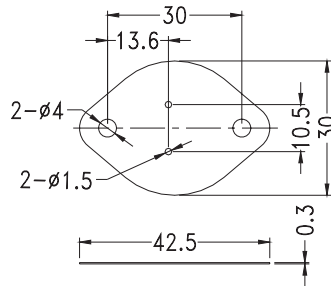
- MATERIAL:NYLON 66(UL)
- FLAME CLASS :94V-2
- COLOR:NATURAL
- UNIT: mm

PART NO	PACKAGE
YPQWC-1	2000

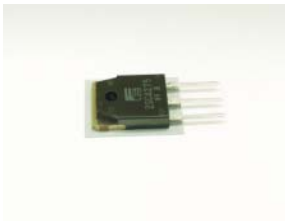
# Transistors Washers & Silicon Insulators



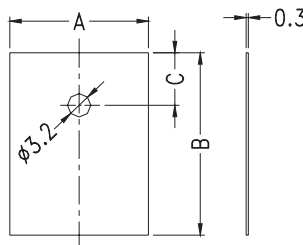
- MATERIAL: SILICON (UL)
- FLAME CLASS :94V-0
- COLOR: GRAY
- UNIT: mm



PART NO	PACKAGE
YPTOC-3	1000



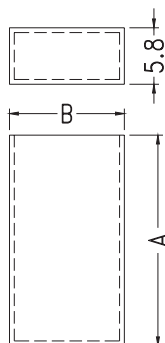
- MATERIAL: SILICON (UL)
- FLAME CLASS :94V-0
- COLOR: GRAY
- UNIT: mm



PART NO	A	B	C	PACKAGE
YPTOC-3P	19.0	25.0	7.2	1000
YPTOC-220	13.2	19.0	5.0	



- MATERIAL: SILICON (UL)
- FLAME CLASS :94V-0
- COLOR: GRAY
- UNIT: mm



PART NO	A	B	THICKNESS	PACKAGE
YPTOC-3PCV	28.5	17.5	0.45	1000
YPTOC-3PCV-A	25.0	18.5		
YPTOC-220CV	21.7	11.5		