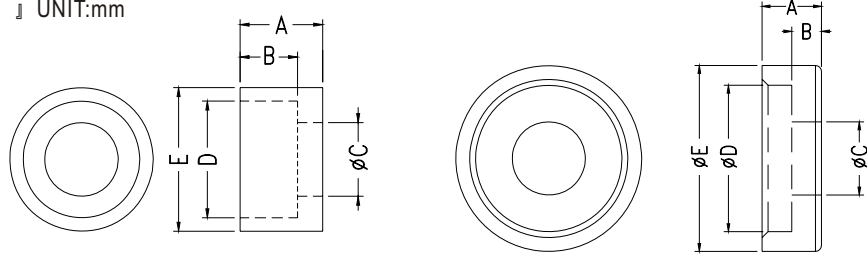
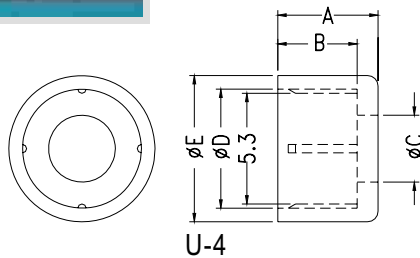


## PCB SPACER SUPPORT

- ▮ MATERIAL: NYLON 66(UL)
- ▮ FLAME CLASS :94V-2/94V-0
- ▮ COLOR:NATURAL
- ▮ UNIT:mm



YPUC-8

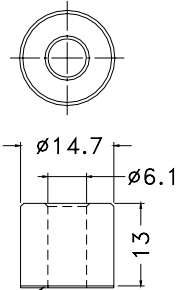


U-4

PART NO	A	B	C	D	E	PACKAGE
YPUC-4	4.9	3.8	3.2	5.7	7.0	2000
YPUC-5	4.6	3.2	4.1	6.5	8.0	2000
YPUC-6	10.0	7.0	3.0	8.5	11.0	1000
YPUC-7	3.1	2.1	3.0	5.5	7.5	2000
YPUC-8	3.0	1.5	3.7	7.4	9.4	2000

## ROUND SPACER WITH 3M TYPE

- ▮ MATERIAL: NYLON 66(UL)
- ▮ FLAME CLASS :94V-2
- ▮ COLOR:NATURAL
- ▮ UNIT:mm

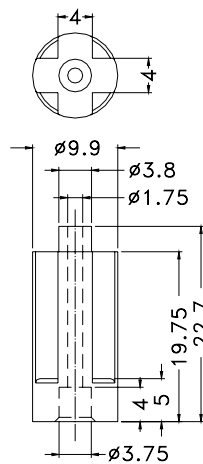


3M DOUBLE ADHESIVE TAPE

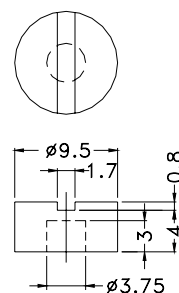
PART NO	PACKAGE
YP6C-13A	1000

## PCB SPACER SUPPORT

- ▮ MATERIAL: NYLON 66(UL)
- ▮ FLAME CLASS :94V-2
- ▮ COLOR:BLACK
- ▮ UNIT:mm



JYCE-2A



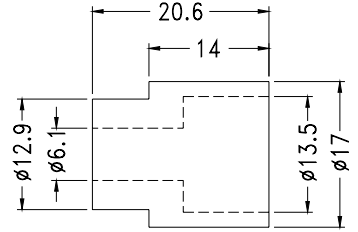
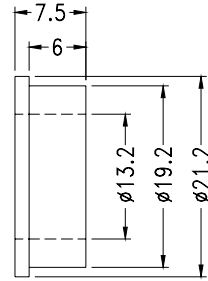
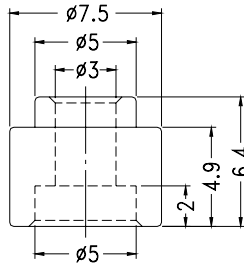
JYCE-2B

PART NO	PACKAGE
YPJYCCE-2	500

## PCB SPACER SUPPORT

- 】 MATERIAL:NYLON 66(UL)
- 】 FLAME CLASS :94V-2
- 】 COLOR:NATURAL
- 】 UNIT:mm

- 】 MATERIAL:ABS(UL)
- 】 FLAME CLASS :94V-0



PART NO	PACKAGE
YPLACSK-5	1000

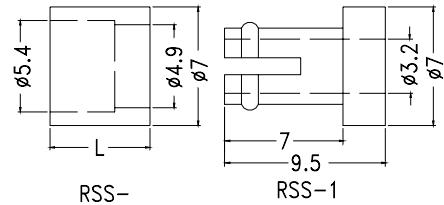
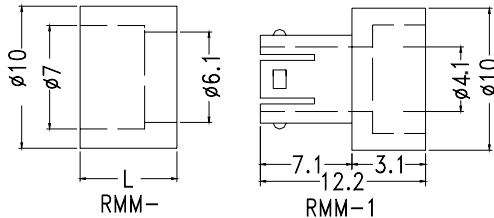
PART NO	PACKAGE
YPRCCXL-1	1000

PART NO	PACKAGE
YPRCCXL-14	1000

## PCB ROUND SPACER

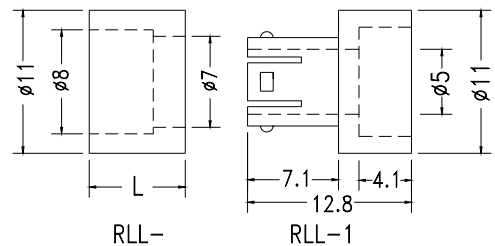
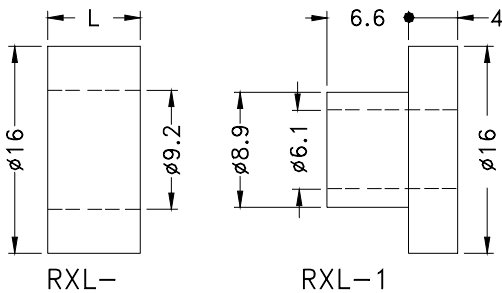


- 】 MATERIAL:ABS(UL)
- 】 FLAME CLASS :94HB
- 】 COLOR:WHITE/NATURAL
- 】 UNIT:mm



PART NO	L	HOLE IN P.C.B	HOLE IN CHASSIS	PACKAGE	
YPRMCM-1	YPRMCM-75	7.5	Ø6.5	Ø4.0	1000
	YPRMCM-100	10.0			
	YPRMCM-150	15.0			

PART NO	L	HOLE IN P.C.B	HOLE IN CHASSIS	PACKAGE	
YPRSCS-1	YPRSCS-60	6.0	Ø5.0	Ø3.5	1000
	YPRSCS-78	7.8			
	YPRSCS-105	10.5			
	YPRSCS-150	15.0			500
	YPRSCS-180	18.0			
	YPRSCS-200	20.0			
YPRSCS-250	25.0				

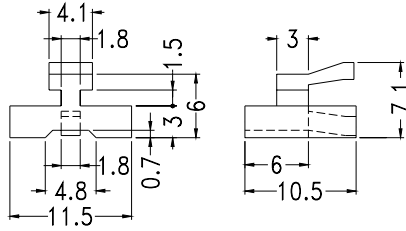
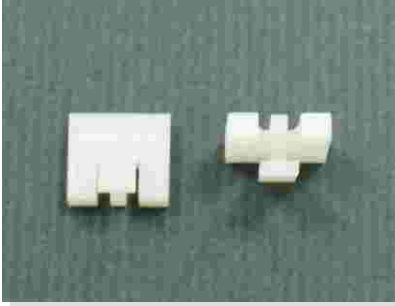


PART NO	L	HOLE IN P.C.B	HOLE IN CHASSIS	PACKAGE	
YPRXCL-1	YPRXCL-5	5.0	Ø9.0	Ø6.0	500
	YPRXCL-7	7.5			
	YPRXCL-10	10.0			

PART NO	L	HOLE IN P.C.B	HOLE IN CHASSIS	PACKAGE	
YPRLCL-1	YPRLCL-57	5.7	Ø7.5	Ø4.5	1000
	YPRLCL-75	7.5			
	YPRLCL-100	10.3			
	YPRLCL-150	15.0			

## PCB SPACER SUPPORT

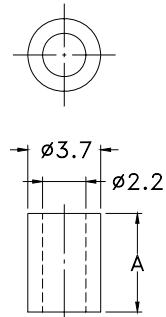
- 』 MATERIAL:NYLON 66(UL)
- 』 FLAME CLASS :94V-2
- 』 COLOR:NATURAL
- 』 UNIT:mm



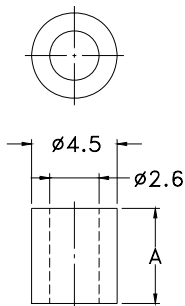
PART NO	PACKAGE
YPJYCCE-1	1000

## ROUND SUPPORT/ NYLON SPCER

- 』 MATERIAL:NYLON 66(UL)
- 』 FLAME CLASS :94V-2
- 』 COLOR:NATURAL
- 』 UNIT:mm



PART NO.	A	PACKAGE
YP2C-2	2.0	2000
YP2C-3	3.0	
YP2C-4	4.0	
YP2C-5	5.0	
YP2C-6	6.0	
YP2C-7	7.0	
YP2C-8	8.0	
YP2C-9	9.0	
YP2C-10	10.0	
YP2C-11	11.0	
YP2C-12	12.0	
YP2C-13	13.0	
YP2C-14	14.0	
YP2C-15	15.0	
YP2C-16	16.0	



PART NO.	A	PACKAGE
YP2.6C-2	2.0	2000
YP2.6C-3	3.0	
YP2.6C-4	4.0	
YP2.6C-5	5.0	
YP2.6C-6	6.0	
YP2.6C-7	7.0	
YP2.6C-8	8.0	
YP2.6C-9	9.0	
YP2.6C-10	10.0	
YP2.6C-11	11.0	
YP2.6C-12	12.0	
YP2.6C-13	13.0	
YP2.6C-14	14.0	
YP2.6C-15	15.0	
YP2.6C-16	16.0	