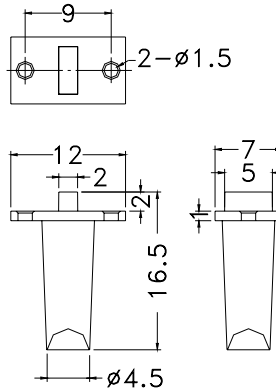


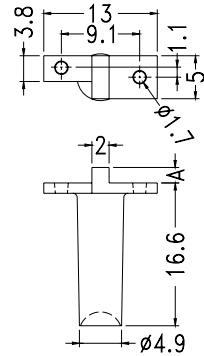
LIGHT PIPE



- ┆ MATERIAL:PC(UL)
- ┆ FLAME CLASS:94V-2
- ┆ COLOR:NATURAL
- ┆ UNIT:mm



PART NO	PACKAGE
YPLECM-12	1000

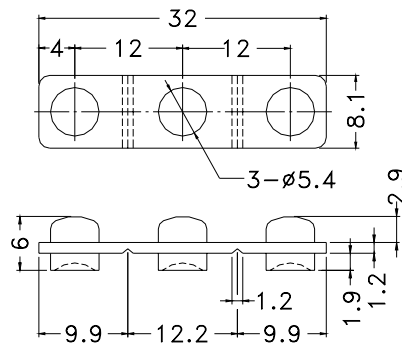


PART NO.	A	PACKAGE
YPLECM-3	1.8	1000
YPLECM-3L	2.2	1000

LIGHT PIPE



- ┆ MATERIAL:PMMA(潰□□)
- ┆ COLOR:NATURAL
- ┆ UNIT:mm

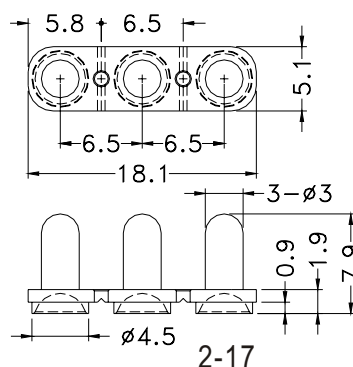


PART NO	PACKAGE
YPLECM-4	500

LIGHT PIPE



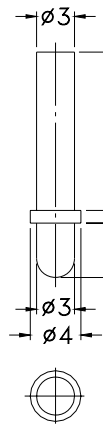
- ┆ MATERIAL:PC(UL)
- ┆ FLAME CLASS:94V-2
- ┆ COLOR:CLEAR
- ┆ UNIT:mm



PART NO	PACKAGE
YPLECM-11	500

LED LIGHT PIPE

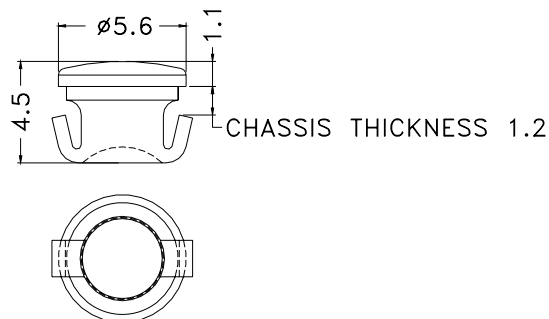
- ┆ MATERIAL:PC
- ┆ FLAME CLASS:94V-2
- ┆ COLOR:NATURAL
- ┆ UNIT:mm



PART NO	PACKAGE
YPLECM-5	1000

LED LIGHT PIPE

- ┆ MATERIAL:PC
- ┆ FLAME CLASS:94V-2
- ┆ COLOR:NATURAL
- ┆ UNIT:mm



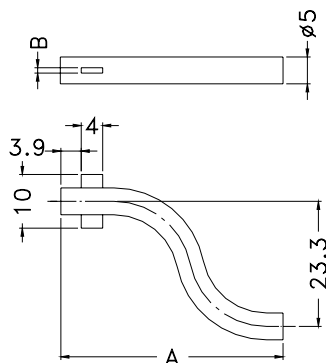
CHASSIS THICKNESS 1.2

MOUNTING HOLE $\phi 5$

PART NO	PACKAGE
YPLECM-7	1000

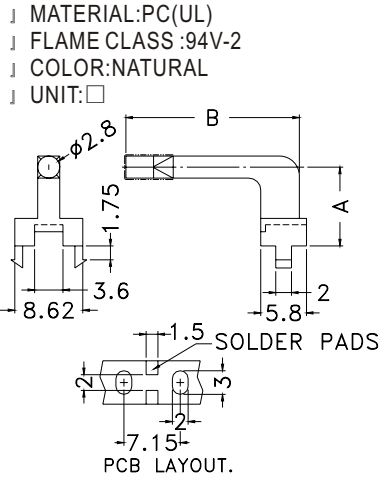
LED LIGHT PIPE

- ┆ MATERIAL:ÅŞ
- ┆ COLOR:NATURAL
- ┆ UNIT:mm

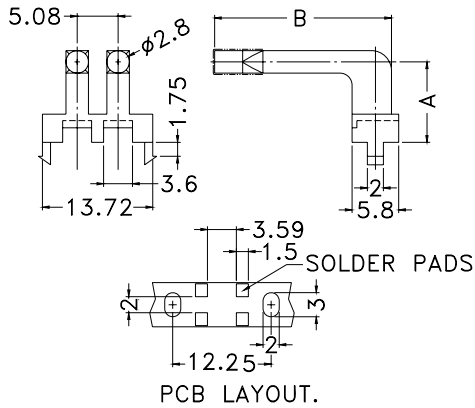


PART NO.	A	B	PACKAGE
YPLPCG-1	41.5	1.3	250
YPLPCG-2	76.5	1.2	100

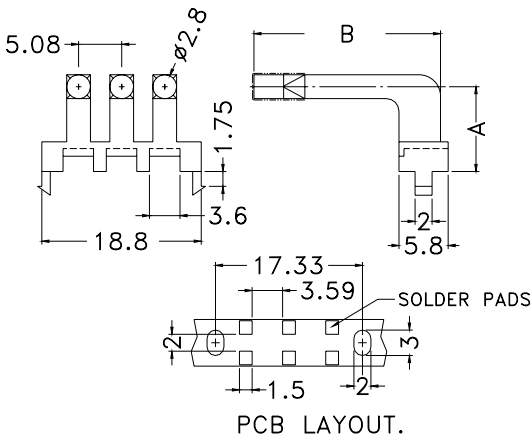
LED LIGHT PIPE



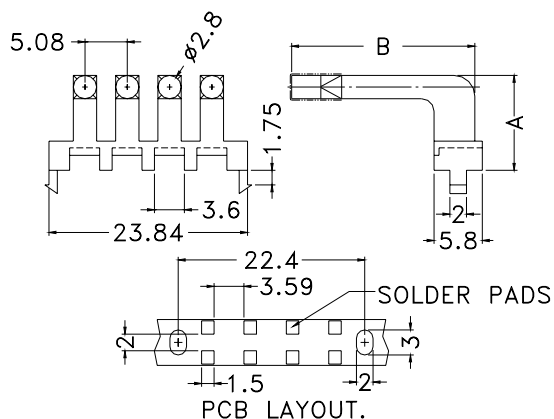
PART NO.	A	B	PACKAGE
YPLPCE1-5-16	5.0	16.0	500
YPLPCE1-5-19	5.0	19.0	
YPLPCE1-5-22	5.0	22.0	
YPLPCE1-10-16	10.0	16.0	
YPLPCE1-10-19	10.0	19.0	
YPLPCE1-10-22	10.0	22.0	
YPLPCE1-15-16	15.0	16.0	
YPLPCE1-15-19	15.0	19.0	
YPLPCE1-15-22	15.0	22.0	



PART NO.	A	B	PACKAGE
YPLPCE2-5-16	5.0	16.0	250
YPLPCE2-5-19	5.0	19.0	
YPLPCE2-5-22	5.0	22.0	
YPLPCE2-10-16	10.0	16.0	
YPLPCE2-10-19	10.0	19.0	
YPLPCE2-10-22	10.0	22.0	
YPLPCE2-15-16	15.0	16.0	
YPLPCE2-15-19	15.0	19.0	
YPLPCE2-15-22	15.0	22.0	



PART NO.	A	B	PACKAGE
YPLPCE3-5-16	5.0	16.0	100
YPLPCE3-5-19	5.0	19.0	
YPLPCE3-5-22	5.0	22.0	
YPLPCE3-10-16	10.0	16.0	
YPLPCE3-10-19	10.0	19.0	
YPLPCE3-10-22	10.0	22.0	
YPLPCE3-15-16	15.0	16.0	
YPLPCE3-15-19	15.0	19.0	
YPLPCE3-15-22	15.0	22.0	



PART NO.	A	B	PACKAGE
YPLPCE4-5-16	5.0	16.0	100
YPLPCE4-5-19	5.0	19.0	
YPLPCE4-5-22	5.0	22.0	
YPLPCE4-10-16	10.0	16.0	
YPLPCE4-10-19	10.0	19.0	
YPLPCE4-10-22	10.0	22.0	
YPLPCE4-15-16	15.0	16.0	
YPLPCE4-15-19	15.0	19.0	
YPLPCE4-15-22	15.0	22.0	