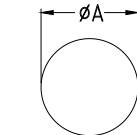
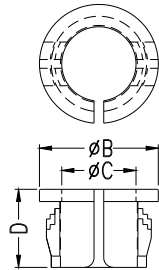


SNAP BUSHING

- ┆ MATERIAL:NYLON 66(UL)
- ┆ FLAME CLASS :94V-2
- ┆ COLOR:BLACK
- ┆ UNIT:mm

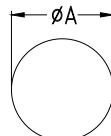
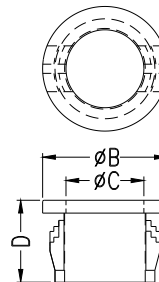


MOUNTING HOLE
 CHASSIS THICKNESS
 0.8~3.3mm

PART NO	A	B	C	D	PACKAGE
YP0813CC	12.7	15.0	9.7	9.8	1000
YP1216CC	15.9	18.4	12.8	10.4	
YP1419CC	19.0	20.7	15.1	10.4	

SNAP BUSHING

- ┆ MATERIAL:NYLON 66(UL)
- ┆ FLAME CLASS :94V-2
- ┆ COLOR:BLACK
- ┆ UNIT:mm

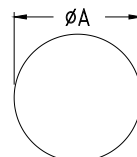
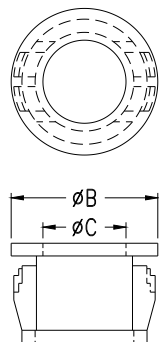


MOUNTING HOLE
 CHASSIS THICKNESS
 0.8~3.3mm

PART NO	A	B	C	D	PACKAGE
YP312C-3	8.0	9.5	5.2	8.2	1000
YP375C-4	9.5	12.0	6.6	10.3	
YP0811C	11.1	13.5	8.3	10.3	
YP0813C	13.0	15.1	9.8	10.3	
YP1216C	16.0	18.2	12.8	10.3	

SNAP BUSHING

- ┆ MATERIAL:NYLON 66(UL)
- ┆ FLAME CLASS :94V-2
- ┆ COLOR:BLACK
- ┆ UNIT:mm

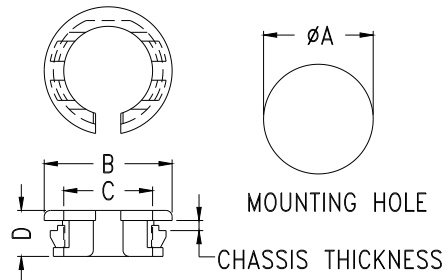


MOUNTING HOLE
 CHASSIS THICKNESS:
 1.0~3.3mm

PART NO	A	B	C	D	PACKAGE
YPNBC-1419	19.0	21.8	14.3	11.3	200
YPNBC-1722	22.2	25.1	18.6	11.2	200
YPNBC-1925	25.4	28.0	19.4	11.2	
YPNBC-2430	30.2	34.0	24.0	11.7	

SNAP BUSHING

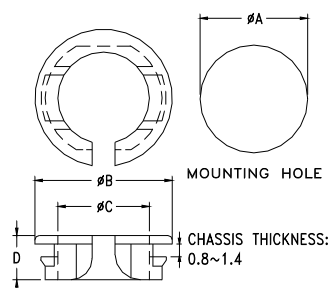
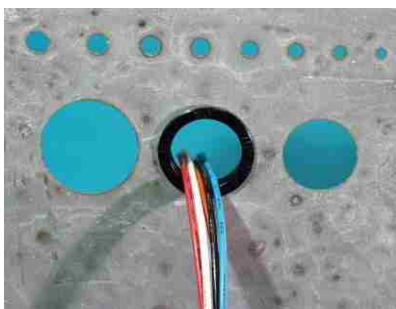
- ┆ MATERIAL: NYLON 66(UL)
- ┆ FLAME CLASS :94V-2/94V-0
- ┆ COLOR:BLACK
- ┆ UNIT:mm



PART NO	A	B	C	D	CHASSIS THICKNESS	PACKAGE
YPNBC-09	9.5	12.4	7.6	6.0	0.8~1.6	1000
YPNBC-12	12.7	16.8	10.8	7.3		500
YPNBC-16	15.9	20.3	14.1	7.3		
YPNBC-19	19.0	22.5	16.5	7.3		
YPNBC-22	22.0	26.0	20.0	7.3		
YPNBC-25	25.4	28.6	22.0	7.9		

SNAP BUSHING

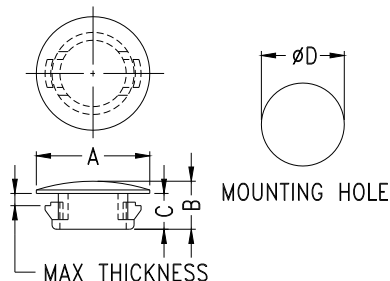
- ┆ MATERIAL: NYLON 66(UL)
- ┆ FLAME CLASS :94V-2/94V-0
- ┆ COLOR:BLACK
- ┆ UNIT:mm



PART NO.	A	B	C	D	PACKAGE
YPNBC-07A	7.0	10.4	6.0	4.8	1000
YPNBC-12A	12.7	16.2	10.8	5.2	500
YPNBC-16A	16.0	19.3	13.0	5.2	
YPNBC-19A	19.0	22.9	15.6	5.5	
YPNBC-21A	21.0	25.0	19.0	5.6	
YPNBC-22A	22.0	25.8	19.3	5.5	
YPNBC-23A*	23.0	26.4	20.4	5.5	
YPNBC-24A	24.0	27.0	20.8	5.3	250
YPNBC-27A	27.0	34.6	27.0	6.0	
YPNBC-29A	29.0	34.0	26.3	7.0	

HOLE PLUGS

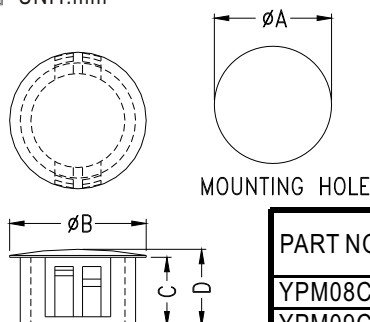
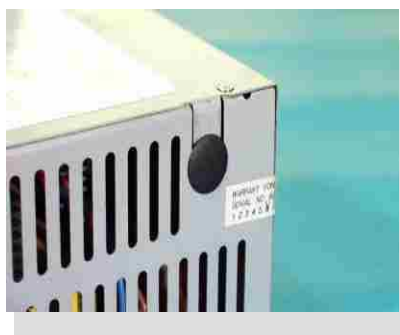
- ┆ MATERIAL: NYLON 66(UL)
- ┆ FLAME CLASS: 94V-2
- ┆ COLOR: BLACK
- ┆ UNIT: mm



PART NO.	A	B	C	D	MAX THICKNESS	PACKAGE
YPM04C	6.3	5.5	4.5	4.7~4.9	1.6	2000
YPM06C	7.6	5.6		6.3~6.5		
YPM09CS	13.0	5.5	4.1	9.5	1.4	1000
YPM16CS	20.0	7.7	6.5	15.9~16	2.0	

HOLE PLUGS

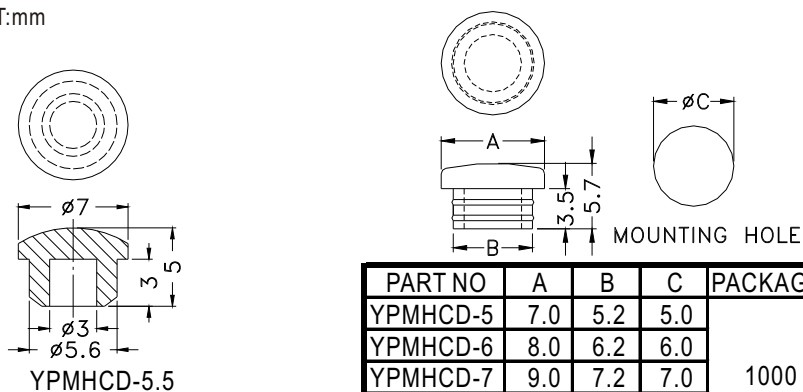
- ┆ MATERIAL: NYLON 66(UL)
- ┆ FLAME CLASS :94V-2
- ┆ COLOR: BLACK/WHITE
- ┆ UNIT: mm



PART NO	A	B	C	D	MAX THICKNESS	PACKAGE
YPM08C	8.0	9.5	6.4	7.6	1.6	1000
YPM09C	9.5	11.9	8.6	10.1		
YPM13C	12.7	14.6	9.0	10.1	3.3	500
YPM16C	16.0	18.7	9.3	10.6		
YPM19C	19.0	23.2	8.7	10.3		
YPM22C	22.2	25.2	9.7	10.9		
YPM25C	25.4	28.4	9.6	11.0	200	200
YPM30C	30.2	34.2	10.0	11.3		

HOLE PLUGS

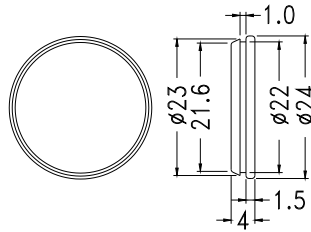
- ┆ MATERIAL: T.P.E
- ┆ COLOR: BLACK/TRANSPARENT
- ┆ MATERIAL: YPMHCD-5.5=SILINON RUBBER
- ┆ COLOR: YPMHCD-5.5=BLACK/COMPUTER/BLUE
- ┆ UNIT: mm



PART NO	A	B	C	PACKAGE
YPMHCD-5	7.0	5.2	5.0	1000
YPMHCD-6	8.0	6.2	6.0	
YPMHCD-7	9.0	7.2	7.0	
YPMHCD-8	10.0	8.2	8.0	

HOLE PLUGS

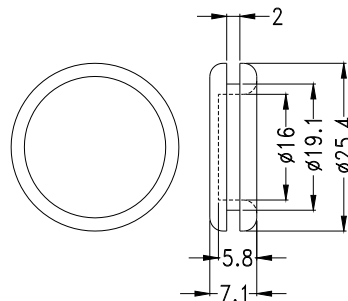
- ┆ MATERIAL:TPE
- ┆ COLOR:WHITE
- ┆ UNIT:mm



PART NO	PACKAGE
YPCDECLT-1	500

RUBBER PLUGS

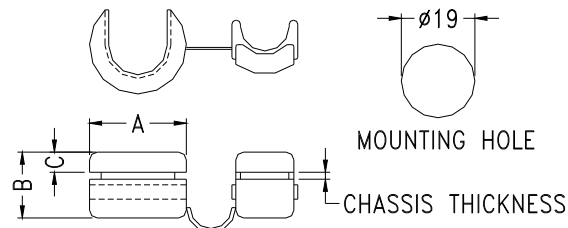
- ┆ MATERIAL:RUBBER
- ┆ COLOR:BLACK
- ┆ UNIT:mm



PART NO	PACKAGE
YPDGCB-19	1000

SWITCH POWER BUSHING

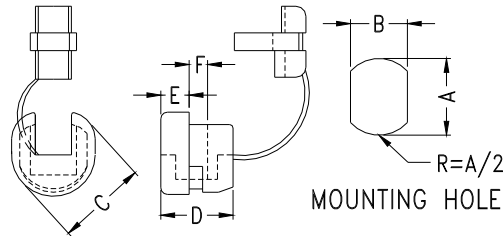
- ┆ MATERIAL:NYLON 66(UL)
- ┆ FLAME CLASS :94V-2
- ┆ COLOR:BLACK
- ┆ UNIT:mm



PART NO	WILL FIT THESE CABLE		CHASSIS THICKNESS	DIMENSION			PACKAGE
	UL/CSA DESCRIPTION	SIZE		続ノ 獅 璽	A	B	
YPSBC7R-7	YPSJCT3C#10	14.0~17.0	0.8~1.6	25.0	17.0	4.5	1000
YPSBC7R-7SP	YPSJCT3C#10	12.0~15.2	0.8~1.6	25.3	17.8	4.5	

STRAIN RELIEF BUSHING

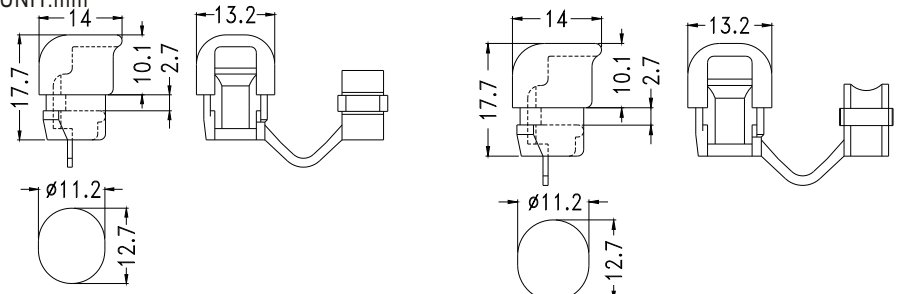
- ┆ MATERIAL: NYLON 66(UL)
- ┆ FLAME CLASS :94V-2
- ┆ COLOR:BLACK
- ┆ UNIT:mm



PART NO	WILL FIT THESE CABLE		CHASSIS DIMENSION		CHASSIS THICKNESS	DIMENSION			PACKAGE
	UL/CSA DESCRIPTION	SIZE	A	B	F	C	D	E	
SB4F-2	SPT-2	4.1X 8.6	12.7	11.8	1.8~2.5	14.5	12.4	4.0	500
SB5R-2	SJT3C#16	□8.2~9.2	12.7	11.5	0.8~1.6	14.0	11.1	4.5	
SB5F-4	SPT-3	5.0 X10.0	14.3	13.4	0.8~1.6	15.4	15.4	6.2	
SB6R-6	SJT3C#16	□8.2~9.2	15.9	14.0	0.8~1.6	17.7	14.6	5.6	
SB8R-2	SJT3C#14 #18 24~30PCS	□12~15.2	22.0	21.7	1.8~2.5	23.6	20.5	8.4	100

STRAIN RELIEF BUSHING

- ┆ MATERIAL: NYLON 66(UL)
- ┆ FLAME CLASS :94V-2
- ┆ COLOR:BLACK
- ┆ UNIT:mm



HOLE IN CHASSIS
 WIRE ACCOMODATED: SPT-2(3x6.6)
 MAXIMUM THICKNESS: 2.5

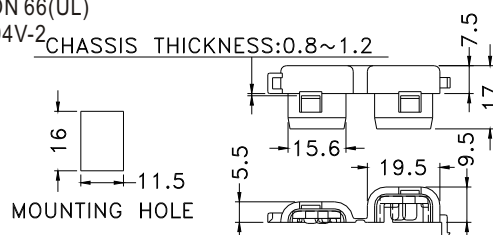
HOLE IN CHASSIS
 WIRE ACCOMODATED: SV(ø6.0)
 MAXIMUM THICKNESS: 2.5

PART NO	PACKAGE
SB4L-4	1000

PART NO	PACKAGE
SB5L-4	1000

SQUARE STRAIN RELIEF BUSHING

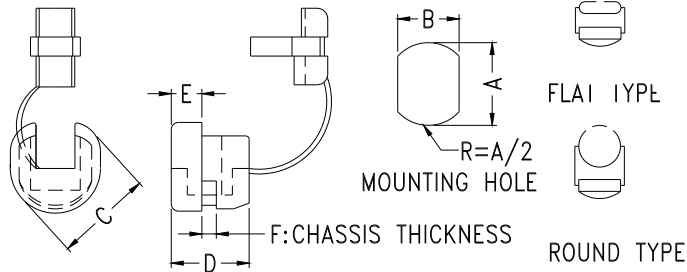
- ┆ MATERIAL: NYLON 66(UL)
- ┆ FLAME CLASS :94V-2
- ┆ COLOR:BLACK
- ┆ UNIT:mm



PART NO	WILL FIT THESE CABLE		PACKAGE
	UL/CSA DESCRIPTION	SIZE	
SB4F-6	SPT-1,SPT-2	3X5.6, 3.71X7.6	200

STRAIN RELIEF BUSHING

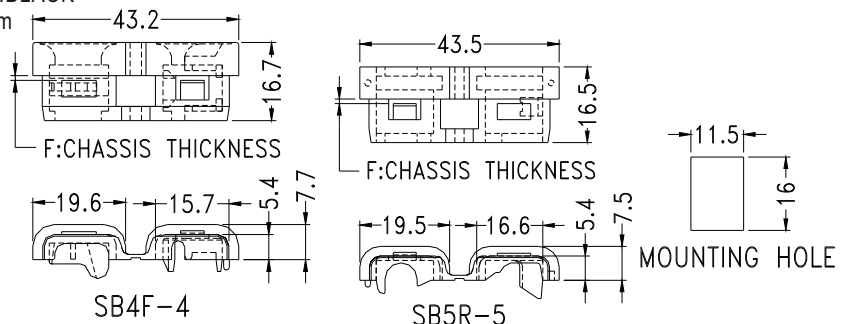
- ┆ MATERIAL: NYLON 66(UL)
- ┆ FLAME CLASS :94V-2
- ┆ COLOR:BLACK
- ┆ UNIT:mm



PART NO	WILL FIT THESE CABLE		CHASSIS DIMENSION		CHASSIS THICKNESS	DIMENSION			SECTION SHAPE	PACKAGE
	UL/CSA DESCRIPTION	SIZE	A	B	F	C	D	E		
YP2PC-4	YPSPT-1	3X5.6	9.5	8.7	0.8~1.6	10.8	10.4	4.0	FLAT TYPE	1000
YP3PC-4	YPSPT-1	3X5.6	11.0	9.9	0.8~1.6	12.1	10.4	4.0		
YP3WC-1	YPSPT-1	3X5.6	11.0	9.9	1.9~2.5	12.5	10.4	3.2		
YP4NC-4	YPSPT-2	3.71X7.6	12.7	11.8	0.8~1.6	13.9	10.4	4.0		
		3.8X7.6	13.1							
YP4KC-4	YPSPT-2	3.71X7.6	12.7	11.8	1.9~2.5	13.9	10.5	4.0	ROUND TYPE	500
		3.8X7.6	13.1							
YP5NC-4	YPSVCT	□ 6.4~7.4	12.7	11.5	0.8~1.6	14.2	10.9	4.2		
YP5PC-4	YPSVCT	□ 6.4~7.4	12.7	11.5	1.9~2.5	14.2	10.9	4.2		
YP6NC-4	YPSJCT3C#18	□ 7.6	15.9	14.0	0.8~1.6	17.8	14.8	5.6		
YP6PC-4	YPSJCT3C#18	□ 7.6	15.9	14.0	1.9~2.5	17.6	14.8	5.6		
YP6NC3-4	YPSJCT3C#16	□ 8.2~9.2	15.9	14.0	0.8~1.6	17.8	15.0	5.6		
YP6PC3-4	YPSJCT3C#16	□ 8.2~9.2	15.9	14.0	1.9~3.2	17.3	14.8	5.8		
YP7NC-2	YPSJCT3C#14	□ 9.2~10.5	19.0	16.5	0.8~1.6	21.5	19.1	7.8		
		□ 11.0	19.8							
YP7PC-2	YPSJCT3C#14	□ 9.2~10.5	19.0	16.5	1.9~3.2	21.7	19.4	7.8	100	
		□ 11.0	19.8							

SQUARE STRAIN RELIEF BUSHING

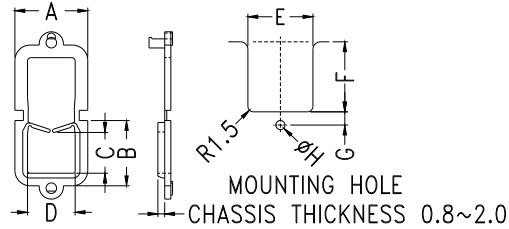
- ┆ MATERIAL: NYLON 66(UL)
- ┆ FLAME CLASS :94V-2
- ┆ COLOR:BLACK
- ┆ UNIT:mm



PART NO	WILL FIT THESE CABLE		CHASSIS THICKNESS	PACKAGE
	UL/CSA DESCRIPTION	SIZE	F	
YPSBC4F-4	YPSPT-1, YPSPT-2	3X5.6, 3.71X7.6	0.8~1.2	250
YPSBC5R-5	YPSVCT3C#18	6.6~7.2	0.8~1.2	

SQUARE SNAP BUSHING

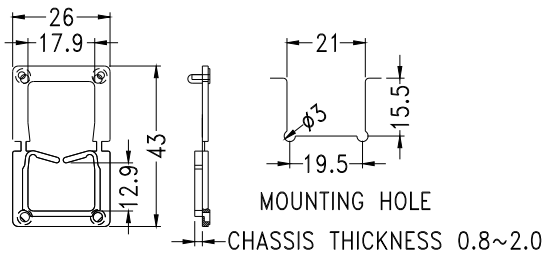
- ┆ MATERIAL:NYLON 66(UL)
- ┆ FLAME CLASS :94V-2
- ┆ COLOR:BLACK
- ┆ UNIT:mm



PART NO	A	B	C	D	E	F	G	H	PACKAGE
YPSQCB-1	18.4	14.5	8.9	11.0	14.0	12.3	2.7	2.7	500
YPSQCB-2	21.4	18.7	12.0	14.0	17.2	18.5	3.5	3.0	

SQUARE SNAP BUSHING

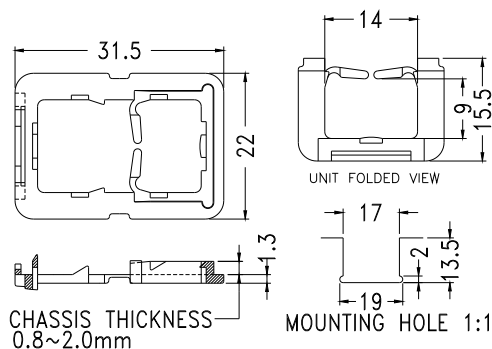
- ┆ MATERIAL:NYLON 66(UL)
- ┆ FLAME CLASS :94V-2
- ┆ COLOR:BLACK
- ┆ UNIT:mm



PART NO	PACKAGE
YPSQCB-3	500

SQUARE SNAP BUSHING

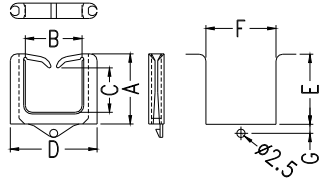
- ┆ MATERIAL:NYLON 66(UL)
- ┆ FLAME CLASS :94V-2
- ┆ COLOR:BLACK
- ┆ UNIT:mm



PART NO	PACKAGE
YPSQCB-4	500

SQUARE SNAP BUSHING

- ┆ MATERIAL:NYLON 66(UL)
- ┆ FLAME CLASS:94V-2
- ┆ COLOR:NATURAL
- ┆ UNIT:mm

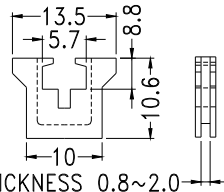


MOUNTING HOLE
 CHASSIS THICKNESS:0.8~2.0

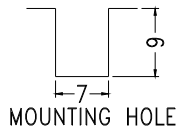
PART NO	A	B	C	D	E	F	G	PACKAGE
YPSQCE-1	12.1	11.5	7.3	19.8	12.3	14.0	2.8	1000
YPSQCE-2	21.0	17.0	14.0	26.0	21.0	21.0	2.7	
YPSQCE-3	28.8	22.7	22.4	33.2	29.0	27.0	2.8	500

SQUARE SNAP BUSHING

- ┆ MATERIAL:NYLON 66(UL)
- ┆ FLAME CLASS :94V-2
- ┆ COLOR:NATURAL
- ┆ UNIT:mm



CHASSIS THICKNESS 0.8~2.0

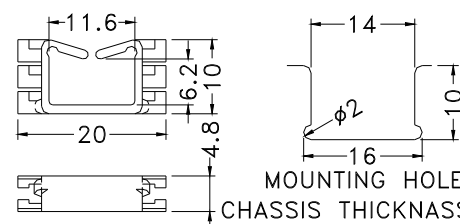


MOUNTING HOLE

PART NO	PACKAGE
YPSQCD-1	1000

SQUARE SNAP BUSHING

- ┆ MATERIAL:NYLON 66(UL)
- ┆ FLAME CLASS :94V-2
- ┆ COLOR:NATURAL/BLACK
- ┆ UNIT:mm



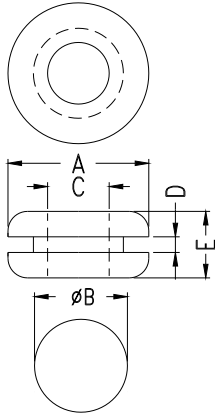
MOUNTING HOLE

CHASSIS THICKNESS:0.8~1.2

PART NO	PACKAGE
YPSQCF-1	500

GROMMET

- ┆ MATERIAL: RUBBER
- ┆ COLOR: BLACK
- ┆ UNIT: mm

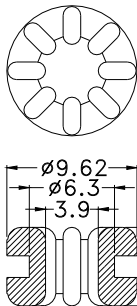
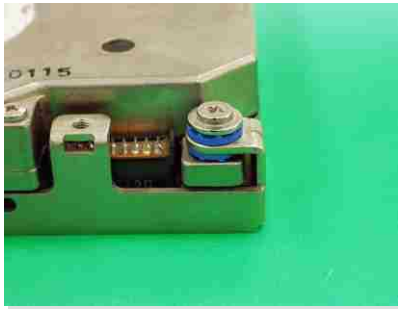


MOUNTING HOLE

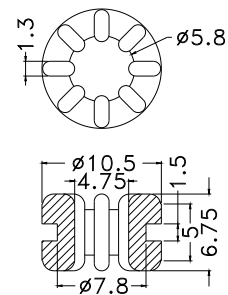
PART NO	A	B	C	D	E	PACKAGE
YPGMC-1	8.0	4.8	3.2	1.6	6.4	2000
YPGMC-1A	9.5	6.4	4.0	1.6	6.4	
YPGMC-2	10.8	8.0	4.5	1.6	4.5	1000
YPGMC-3	14.4	9.5	6.3	1.6	7.0	
YPGMC-3A	14.2	11.0	8.0	1.6	4.8	
YPGMC-4	17.5	12.7	9.5	1.6	6.8	
YPGMC-5	22.0	17.5	14.2	1.6	4.8	500
YPGMC-6	22.0	19.0	16.0	1.6	5.5	
YPGMC-6A	25.0	19.5	18.0	1.6	6.0	250
YPGMC-7	31.4	25.2	18.5	1.6	8.0	1000
YPGMC-8	19.5	14.0	6.0	1.0	7.0	
YPGMC-9	15.9	12.7	9.5	1.6	6.4	
YPGMC-15	10.8	8.0	5.0	1.6	4.5	
YPGMC-18	13.0	8.4	5.5	3.3	6.3	

ANTI-VIBATEGROMMET

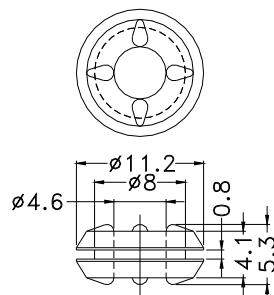
- ┆ MATERIAL: TPE
- ┆ COLOR: BLUE/YELLOW/PURPLE
- ┆ UNIT: mm



PART NO	PACKAGE
YPTGCM-10	1000



PART NO	PACKAGE
YPTGCM-13	1000



PART NO	PACKAGE
YPTGCM-11	1000