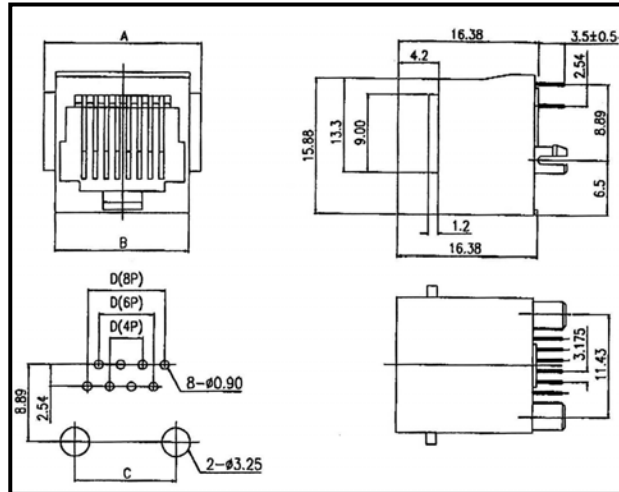
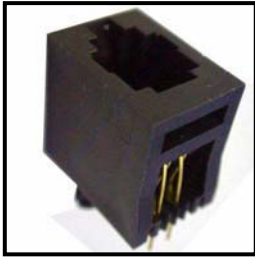
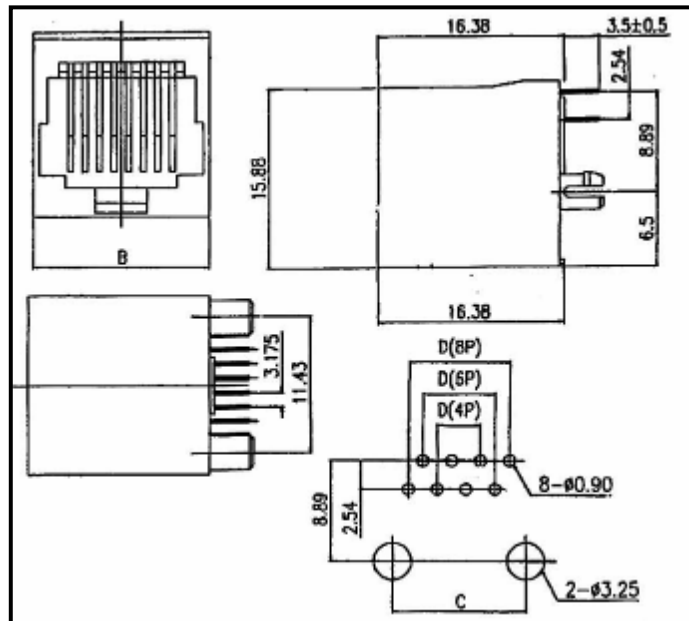


C0C052 Series Top entry modular jack (unshielded w/o panel)



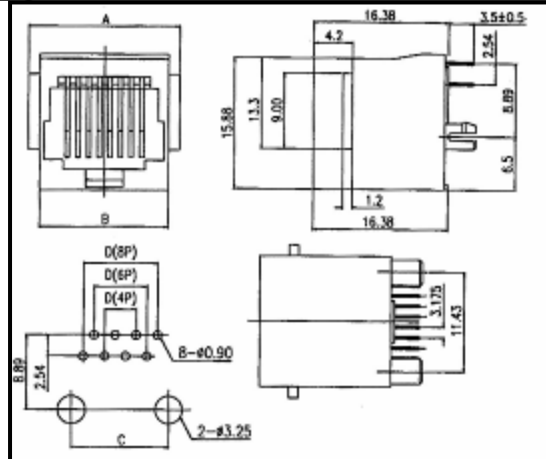
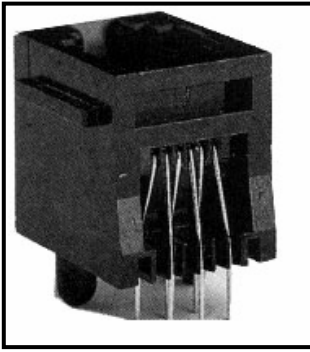
No. of Positions	Dimensions			
	A	B	C	D
4	13.97	11.43	7.62	3.81
6	15.90	13.46	10.16	6.35
8	17.84	15.36	11.43	8.89

C0C052 series top entry modular jack (fully shielded)



No. of Positions	Dimensions		
	B	C	D
4	11.43	7.62	3.81
6	13.46	10.16	6.35
8	15.36	11.43	8.89

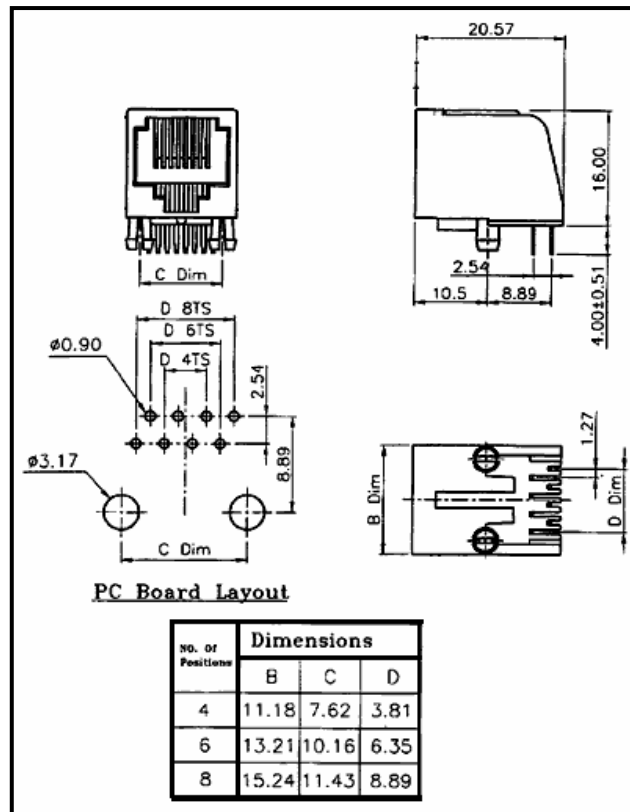
C0C052 series top entry modular jack (unshielded)(with panel)



No. of Positions	Dimensions			
	A	B	C	D
4	13.97	11.43	7.62	3.81
6	15.90	13.46	10.16	6.35
8	17.84	15.36	11.43	8.89

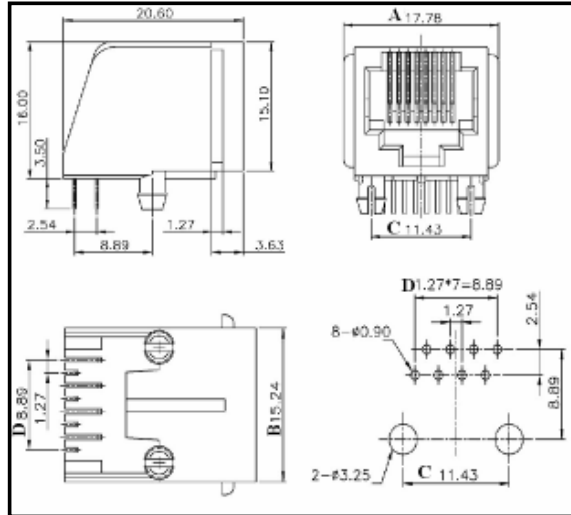
C0C063 series side entry modular jack (unshielded)(w/o panel)

Height=16.00mm, length=20.57mm



C0C063 series side entry modular jack (unshielded)(with panel)

Height=16.00mm, length=20.57mm



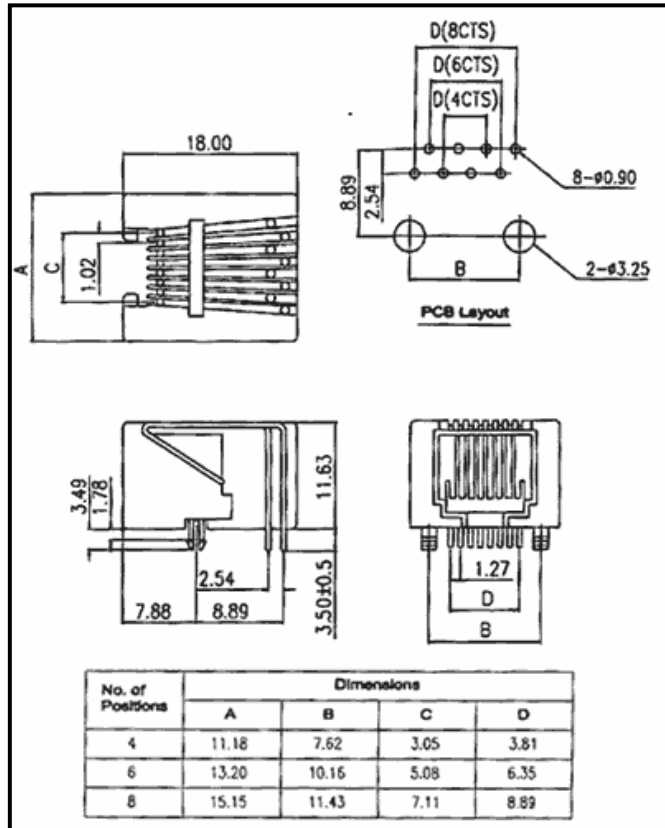
No. of position	Dimensions			
	A	B	C	D
4	13.72	11.18	7.62	3.81
6	15.75	13.21	10.16	6.35
8	17.78	15.24	11.43	8.89

ORDERING INFORMATION

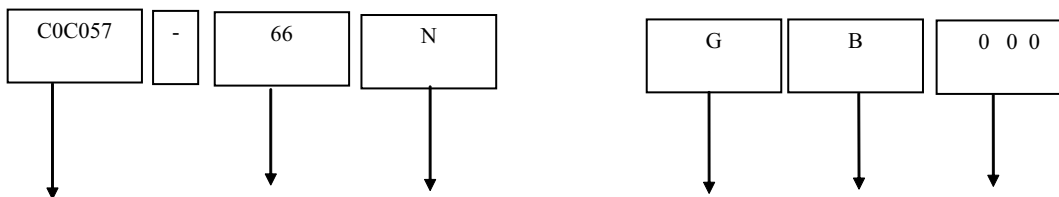
C0C052 C0C063	-	66	B	S	G	B	0 0
Series: Number	Contact Number	Body Option	Foot Type	Contact Plating	Insulator Colour	Fill with "0" "0"	
C0C052 C0C063	44: 4p4c 66: 6p6c 64: 6p4c 88: 8p8c	A: With Panel Stop (unshielded) B: W/O Panel Stop (unshielded) D: W/O Panel Stop (Shielded) <small>(D is only available with C0C052)</small>	S: Split Foot	G: Gold Flash K: Gold 6u" C: Gold 15u" D: Gold 30u" M: Gold 50u"	B: Black		

C0C057 Series side entry modular plug (unshielded) (Low Profile)

Height=11.63mm, Length=18mm



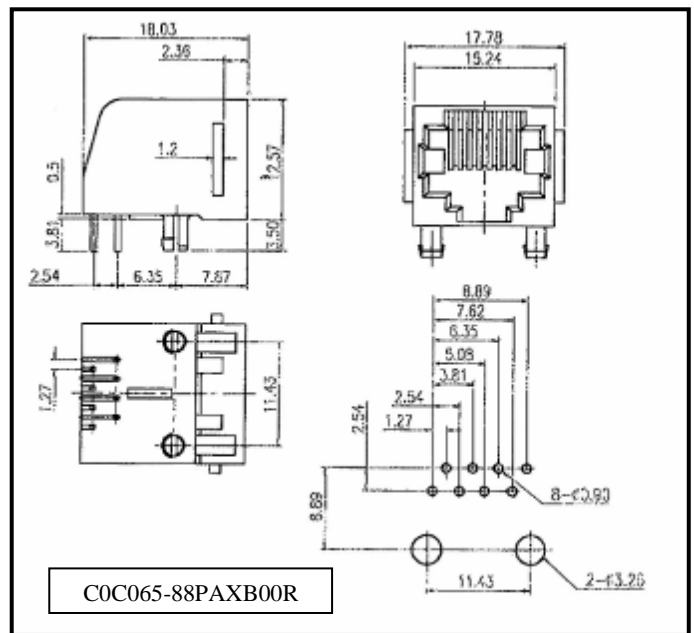
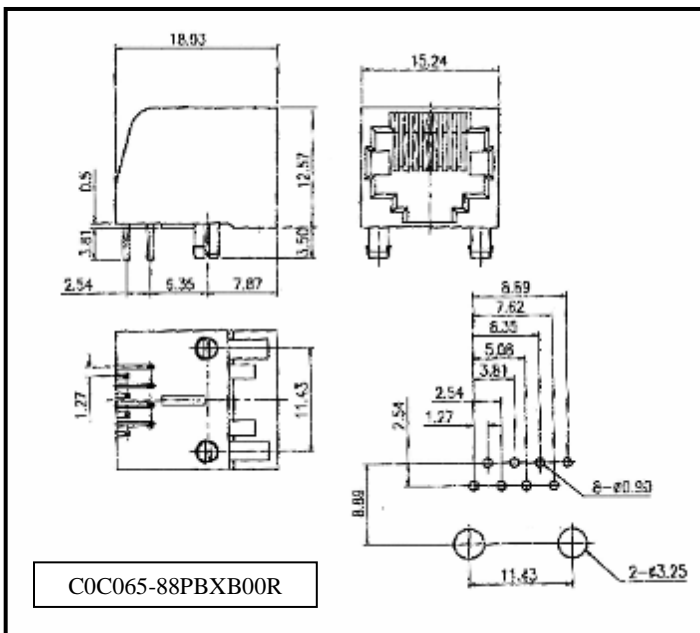
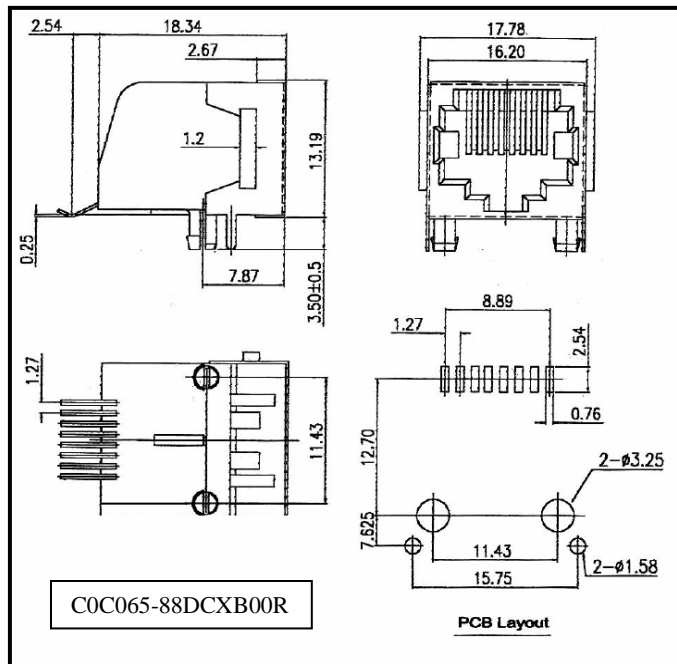
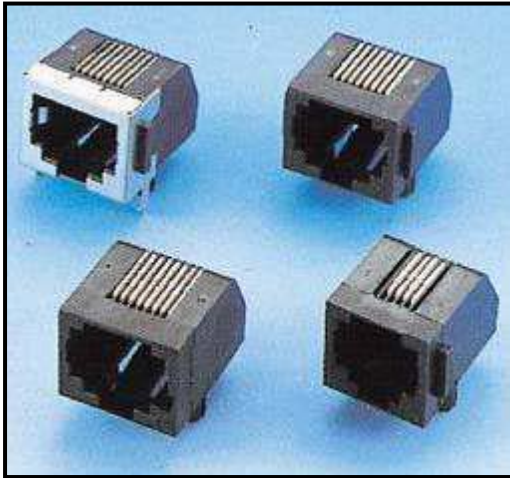
ORDERING INFORMATION



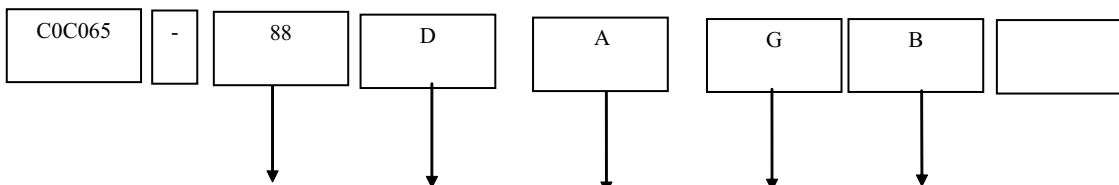
Series: Number	Contact Number	Body Option	Contact Plating	Insulator Colour	Fill with "0" "0" "0"
C0C057	44: 4p4c 66: 6p6c 64: 6p4c 88: 8p8c	Y: With Fully shielded N: W/O shielded F: Front shielded Only	G: Gold Flash K: Gold 6u" C: Gold 15u" D: Gold 30u" M: Gold 50u"	B: Black	

C0C065 Series side entry modular plug

Height=13.90mm, Length=18.34mm



ORDERING INFORMATION



Series Number	Contact Number	Contact Type	Body Option	Contact Plating	Insulator Colour	Fill with "0" "0"
C0C065	44: 4p4c 66: 6p6c 64: 6p4c 88: 8p8c	P: Dip Type D: S.M.T Type	A: With Panel Stop (unshielded) B: W/O Panel Stop (unshielded) C: With Panel Stop (Shielded)	G: Gold Flash K: Gold 6u" C: Gold 15u" D: Gold 30u" M: Gold 50u"	B: Black	