



**Features**

- Single-Turn / Carbon / Commercial Open Frame
- Board retention feature
- Vertical or horizontal adjustment
- Dust resistant / splash resistant covers

**15mm Carbon - Film, Trimmer Potentiometer**

**Electrical Characteristics**

Standard Resistance Range  
 .....100Ω to 2 MΩ  
 (see standard resistance table)  
 Resistance Tolerance.....±20%  
 more than 1MΩ ± 30%  
 Adjustment Angle.....270° ± 20°  
 Residual Resistance.....  
 R ≥ 250KΩ 0.1% max. Of total resistance  
 250KΩ > R > 10K 20Ω max.  
 10KΩ ≥ R 10Ω max.

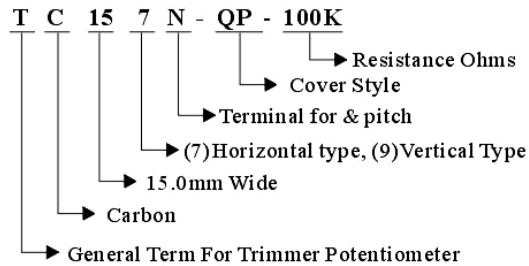
**Environmental Characteristics**

Power Rating  
 Max Working Voltage.....100V  
 50° C.....0.1 Watt  
 Temperature Range.....-10°C to +70°C  
 Temperature Coefficient.....±1000ppm/°C  
 Rotation Life.....±15%

**Physical Characteristics**

Torque (Operating).....40 ± 20 gf-cm  
 Stop Strength.....1 kgf-cm  
 Soldering Conditions.....230°C to 260°C  
 and with in 3 seconds  
 Marking.....Resistance code  
 Standard Packaging.....100 pcs. Per bag  
 Aqueous cleaning not recommended

**How to order**

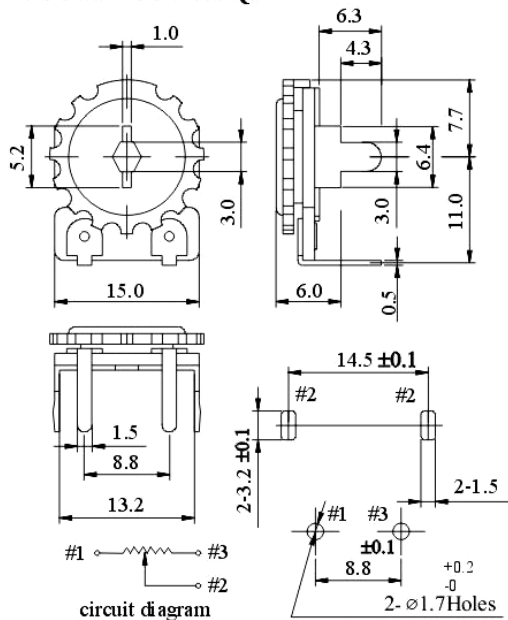


**Standard Resistance Table**

Resistance Ohms	Resistance Code
10KΩ	103
50KΩ	503
100KΩ	104
200KΩ	204
300KΩ	304
500KΩ	504
1MΩ	105
2MΩ	205

**EXTERNAL DIMENSIONS AND RESISTANCE INDICATION**

**STYLE : TC157N-QP**



**STYLE : TC159K-QP**

