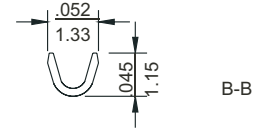
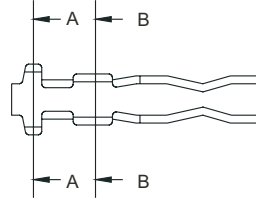


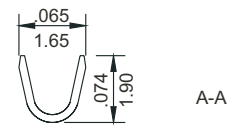
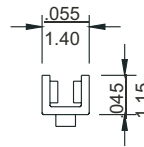
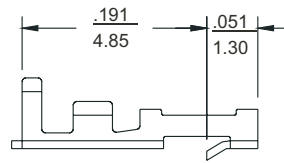
# 079" (2.0mm) Crimp Terminal Housing

## AHT Crimp Terminal

- \* Material : Brass
- \* Current rating : 1A, AC/DC
- \* Voltage rating : 125V, AC/DC
- \* Applicable wire AWG #30- #26
- \* Used in AH1, AH2 series housings
- \* Finish : Tin-Plated AHT-T  
Gold-Flash AHT-G



inch  
mm

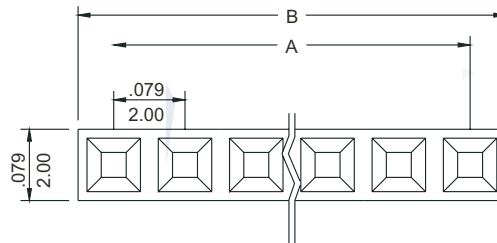


E118260

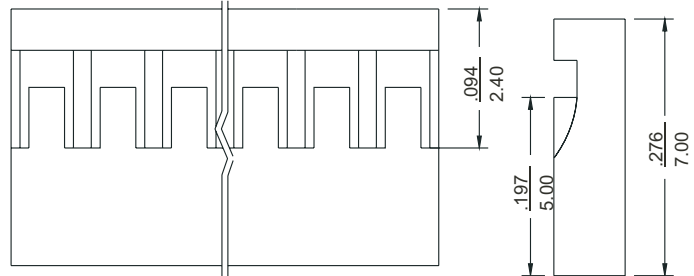
LR 82315

## AH1 Series Single Row Crimp Terminal Housings

- \* Material : PBT, UL 94V-0
- \* Current rating : 1A, AC/DC
- \* Voltage rating : 125V, AC/DC
- \* Standard color: black
- \* Accepts AHT terminal
- \* Mates with AH1I, AH1L series headers
- \* 2-40 circuits available



inch  
mm



E118260

LR 82315

Dimensional information - inch/mm

Circuits	Dim. A		Dim. B		Circuits	Dim. A		Dim. B		Circuits	Dim. A		Dim. B	
	inch	mm	inch	mm		inch	mm	inch	mm		inch	mm	inch	mm
2	0.079	2.00	0.167	4.00	15	1.102	28.00	1.181	30.00	28	2.126	54.00	2.205	56.00
3	0.157	4.00	0.236	6.00	16	1.181	30.00	1.260	32.00	29	2.205	56.00	2.283	58.00
4	0.236	6.00	0.315	8.00	17	1.260	32.00	1.339	34.00	30	2.283	58.00	2.362	60.00
5	0.315	8.00	0.394	10.00	18	1.339	34.00	1.417	36.00	31	2.362	60.00	2.441	62.00
6	0.394	10.00	0.472	12.00	19	1.417	36.00	1.496	38.00	32	2.441	62.00	2.520	64.00
7	0.472	12.00	0.551	14.00	20	1.496	38.00	1.575	40.00	33	2.520	64.00	2.598	66.00
8	0.551	14.00	0.630	16.00	21	1.575	40.00	1.654	42.00	34	2.598	66.00	2.677	68.00
9	0.630	16.00	0.709	18.00	22	1.654	42.00	1.732	44.00	35	2.677	68.00	2.756	70.00
10	0.709	18.00	0.787	20.00	23	1.732	44.00	1.811	46.00	36	2.756	70.00	2.835	72.00
11	0.787	20.00	0.866	22.00	24	1.811	46.00	1.890	48.00	37	2.835	72.00	2.913	74.00
12	0.866	22.00	0.945	24.00	25	1.890	48.00	1.969	50.00	38	2.913	74.00	2.992	76.00
13	0.945	24.00	1.024	26.00	26	1.969	50.00	2.047	52.00	39	2.992	76.00	3.071	78.00
14	1.024	26.00	1.102	28.00	27	2.047	52.00	2.126	54.00	40	3.071	78.00	3.150	80.00

# .079" (2.0mm) Center Header

## AH1I Series Single Row Straight Pin Headers

- \* Material : PBT, UL 94V-0
- \* Contact : Phosphor bronze
- \* Current rating : 1A, AC/DC
- \* Voltage rating : 125V, AC/DC
- \* Standard color: black
- \* .020" (0.5mm) straight square pins
- \* Various pin length available
- \* Mates with AH1, FH1 series housings
- \* 2-40 circuits available

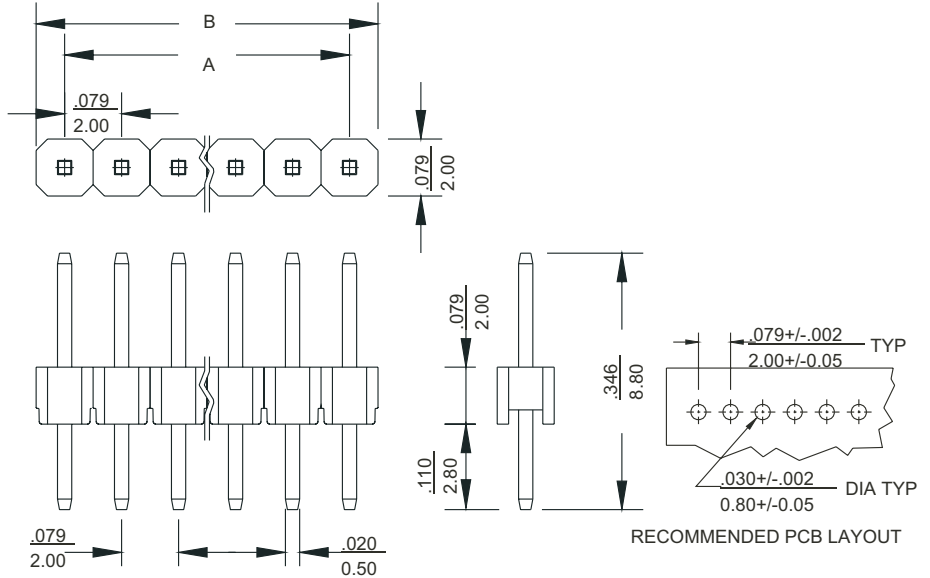
inch  
mm



E118260

LR 82315

Dimensional information - inch/mm (AH1I/AH1L)



Circuits	Dim. A		Dim. B		Circuits	Dim. A		Dim. B		Circuits	Dim. A		Dim. B	
	inch	mm	inch	mm		inch	mm	inch	mm		inch	mm	inch	mm
2	0.079	2.00	0.167	4.00	15	1.102	28.00	1.181	30.00	28	2.126	54.00	2.205	56.00
3	0.157	4.00	0.236	6.00	16	1.181	30.00	1.260	32.00	29	2.205	56.00	2.283	58.00
4	0.236	6.00	0.315	8.00	17	1.260	32.00	1.339	34.00	30	2.283	58.00	2.362	60.00
5	0.315	8.00	0.394	10.00	18	1.339	34.00	1.417	36.00	31	2.362	60.00	2.441	62.00
6	0.394	10.00	0.472	12.00	19	1.417	36.00	1.496	38.00	32	2.441	62.00	2.520	64.00
7	0.472	12.00	0.551	14.00	20	1.496	38.00	1.575	40.00	33	2.520	64.00	2.598	66.00
8	0.551	14.00	0.630	16.00	21	1.575	40.00	1.654	42.00	34	2.598	66.00	2.677	68.00
9	0.630	16.00	0.709	18.00	22	1.654	42.00	1.732	44.00	35	2.677	68.00	2.756	70.00
10	0.709	18.00	0.787	20.00	23	1.732	44.00	1.811	46.00	36	2.756	70.00	2.835	72.00
11	0.787	20.00	0.866	22.00	24	1.811	46.00	1.890	48.00	37	2.835	72.00	2.913	74.00
12	0.866	22.00	0.945	24.00	25	1.890	48.00	1.969	50.00	38	2.913	74.00	2.992	76.00
13	0.945	24.00	1.024	26.00	26	1.969	50.00	2.047	52.00	39	2.992	76.00	3.071	78.00
14	1.024	26.00	1.102	28.00	27	2.047	52.00	2.126	54.00	40	3.071	78.00	3.150	80.00

## AH1L Series Single Row Right Angle Pin Headers

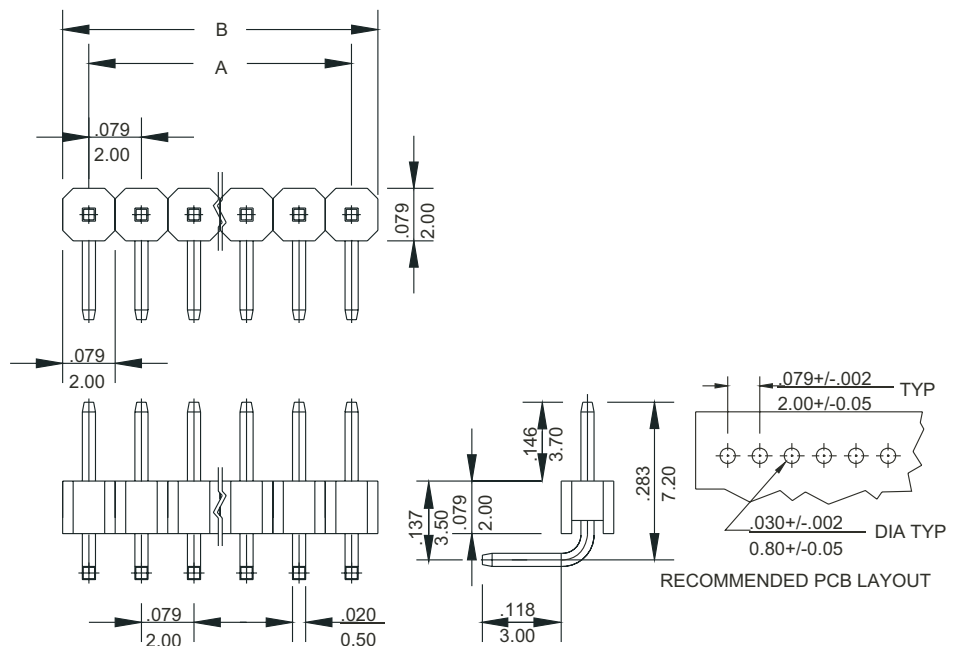
- \* Material : PBT, UL 94V-0
- \* Contact : Phosphor bronze
- \* Current rating : 1A, AC/DC
- \* Voltage rating : 125V, AC/DC
- \* Standard color: black
- \* .020" (0.5mm) right angle square pins
- \* Various pin length available
- \* Mates with Ah1, FH1 series housings
- \* 2-40 circuits available

inch  
mm



E118260

LR 82315

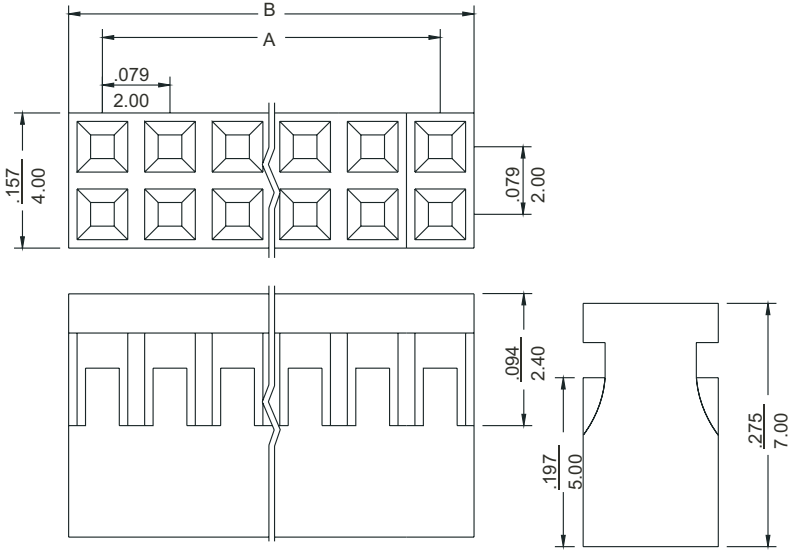


# .079" (2.0mm) Crimp Terminal Housing

## AH2 Series Dual Row Crimp Terminal Housings

- \* Material : PBT, UL 94V-0
- \* Current rating : 1A, AC/DC
- \* Voltage rating : 125V, AC/DC
- \* Standard color: black
- \* Accepts AHT terminal
- \* Mates with AH2I, AH2L series headers
- \* 4-80 circuits available

inch  
mm



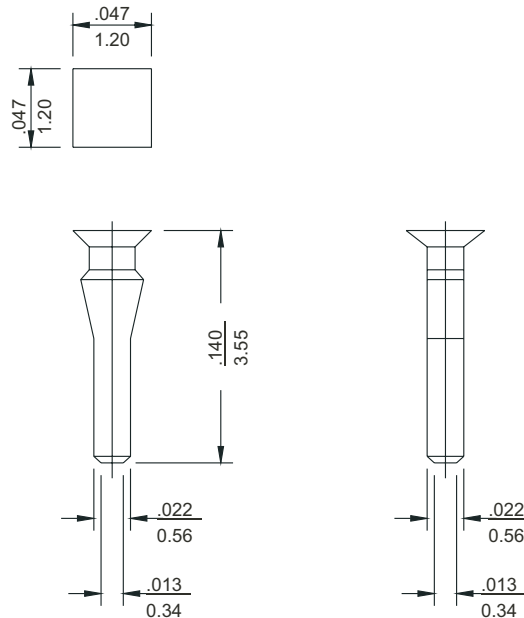
Dimensional information - inch/mm

Circuits	Dim. A		Dim. B		Circuits	Dim. A		Dim. B		Circuits	Dim. A		Dim. B	
	inch	mm	inch	mm		inch	mm	inch	mm		inch	mm	inch	mm
4	0.079	2.00	0.167	4.00	30	1.102	28.00	1.181	30.00	56	2.126	54.00	2.205	56.00
6	0.157	4.00	0.236	6.00	32	1.181	30.00	1.260	32.00	58	2.205	56.00	2.283	58.00
8	0.236	6.00	0.315	8.00	34	1.260	32.00	1.339	34.00	60	2.283	58.00	2.362	60.00
10	0.315	8.00	0.394	10.00	36	1.339	34.00	1.417	36.00	62	2.362	60.00	2.441	62.00
12	0.394	10.00	0.472	12.00	38	1.417	36.00	1.496	38.00	64	2.441	62.00	2.520	64.00
14	0.472	12.00	0.551	14.00	40	1.496	38.00	1.575	40.00	66	2.520	64.00	2.598	66.00
16	0.551	14.00	0.630	16.00	42	1.575	40.00	1.654	42.00	68	2.598	66.00	2.677	68.00
18	0.630	16.00	0.709	18.00	44	1.654	42.00	1.732	44.00	70	2.677	68.00	2.756	70.00
20	0.709	18.00	0.787	20.00	46	1.732	44.00	1.811	46.00	72	2.756	70.00	2.835	72.00
22	0.787	20.00	0.866	22.00	48	1.811	46.00	1.890	48.00	74	2.835	72.00	2.913	74.00
24	0.866	22.00	0.945	24.00	50	1.890	48.00	1.969	50.00	76	2.913	74.00	2.992	76.00
26	0.945	24.00	1.024	26.00	52	1.969	50.00	2.047	52.00	78	2.992	76.00	3.071	78.00
28	1.024	26.00	1.102	28.00	54	2.047	52.00	2.126	54.00	80	3.071	78.00	3.150	80.00

## 200KEY Polarizing key

- \* Material : PBT UL 94V-0
- \* Color : white
- \* plug into pitch 2.0mm housing
- \* Push key until key top is flush with housing front surface

inch  
mm

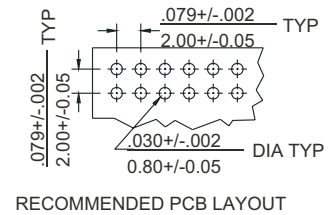
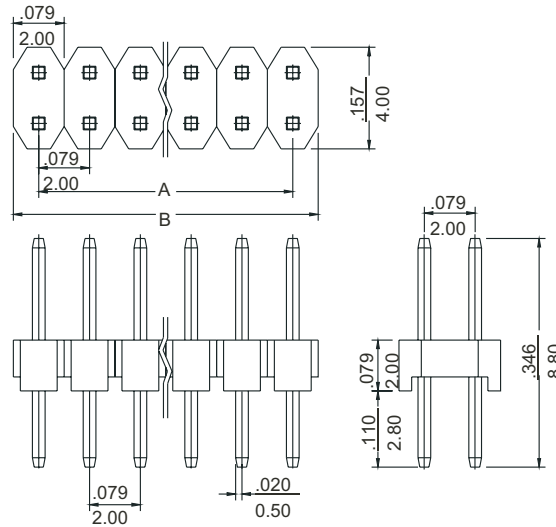


# .079" (2.0mm) Center Header

## AH2I Series Dual Row Straight Pin Headers

- \* Material : PBT, UL 94V-0
- \* Contact : Phosphor bronze
- \* Current rating : 1A, AC/DC
- \* Voltage rating : 125V, AC/DC
- \* Standard color: black
- \* .020" (0.5mm) straight square pins
- \* Various pin length available
- \* Mates with Ah2, FH2 series housings
- \* 4-80 circuits available

inch  
mm



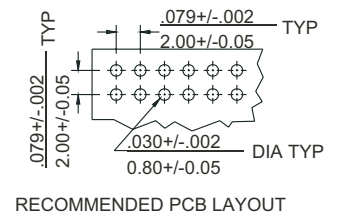
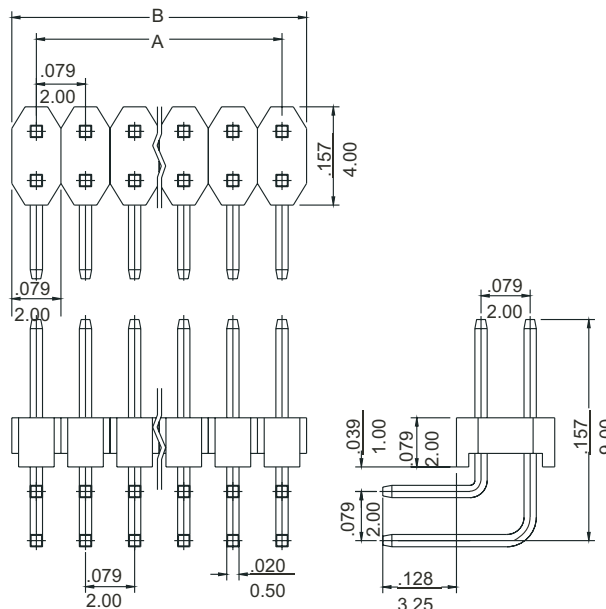
Dimensional information - inch/mm (AH2I/AH2L)

Circuits	Dim. A		Dim. B		Circuits	Dim. A		Dim. B		Circuits	Dim. A		Dim. B	
	inch	mm	inch	mm		inch	mm	inch	mm		inch	mm	inch	mm
4	0.079	2.00	0.167	4.00	30	1.102	28.00	1.181	30.00	56	2.126	54.00	2.205	56.00
6	0.157	4.00	0.236	6.00	32	1.181	30.00	1.260	32.00	58	2.205	56.00	2.283	58.00
8	0.236	6.00	0.315	8.00	34	1.260	32.00	1.339	34.00	60	2.283	58.00	2.362	60.00
10	0.315	8.00	0.394	10.00	36	1.339	34.00	1.417	36.00	62	2.362	60.00	2.441	62.00
12	0.394	10.00	0.472	12.00	38	1.417	36.00	1.496	38.00	64	2.441	62.00	2.520	64.00
14	0.472	12.00	0.551	14.00	40	1.496	38.00	1.575	40.00	66	2.520	64.00	2.598	66.00
16	0.551	14.00	0.630	16.00	42	1.575	40.00	1.654	42.00	68	2.598	66.00	2.677	68.00
18	0.630	16.00	0.709	18.00	44	1.654	42.00	1.732	44.00	70	2.677	68.00	2.756	70.00
20	0.709	18.00	0.787	20.00	46	1.732	44.00	1.811	46.00	72	2.756	70.00	2.835	72.00
22	0.787	20.00	0.866	22.00	48	1.811	46.00	1.890	48.00	74	2.835	72.00	2.913	74.00
24	0.866	22.00	0.945	24.00	50	1.890	48.00	1.969	50.00	76	2.913	74.00	2.992	76.00
26	0.945	24.00	1.024	26.00	52	1.969	50.00	2.047	52.00	78	2.992	76.00	3.071	78.00
28	1.024	26.00	1.102	28.00	54	2.047	52.00	2.126	54.00	80	3.071	78.00	3.150	80.00

## AH2L Series Dual Row Right Angle Pin Headers

- \* Material : PBT, UL 94V-0
- \* Contact : Phosphor bronze
- \* Current rating : 1A, AC/DC
- \* Voltage rating : 125V, AC/DC
- \* Standard color: black
- \* .020" (0.5mm) right angle square pins
- \* Various pin length available
- \* Mates with AH2, FH2 series housings
- \* 4-80 circuits available

inch  
mm



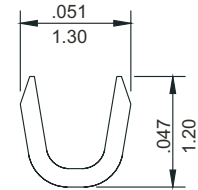
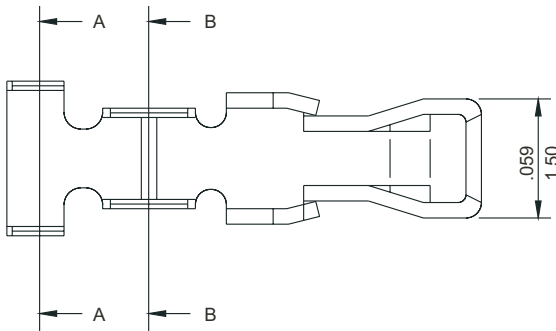
## .079" (2.0mm) Crimp Terminal

### FHT Crimp Terminal

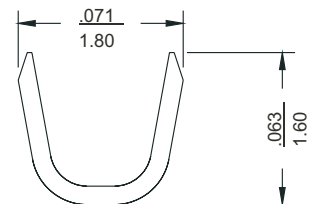
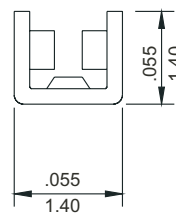
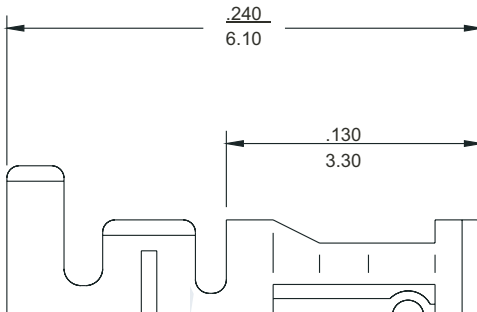
- \* Material : Brass
- \* Current rating : 2A, AC/DC
- \* Voltage rating : 250V, AC/DC
- \* Applicable wire AWG ~~30~~ - #26
- \* Used in FH1, FH2 series housings

inch  
mm

  
E118260



B-B



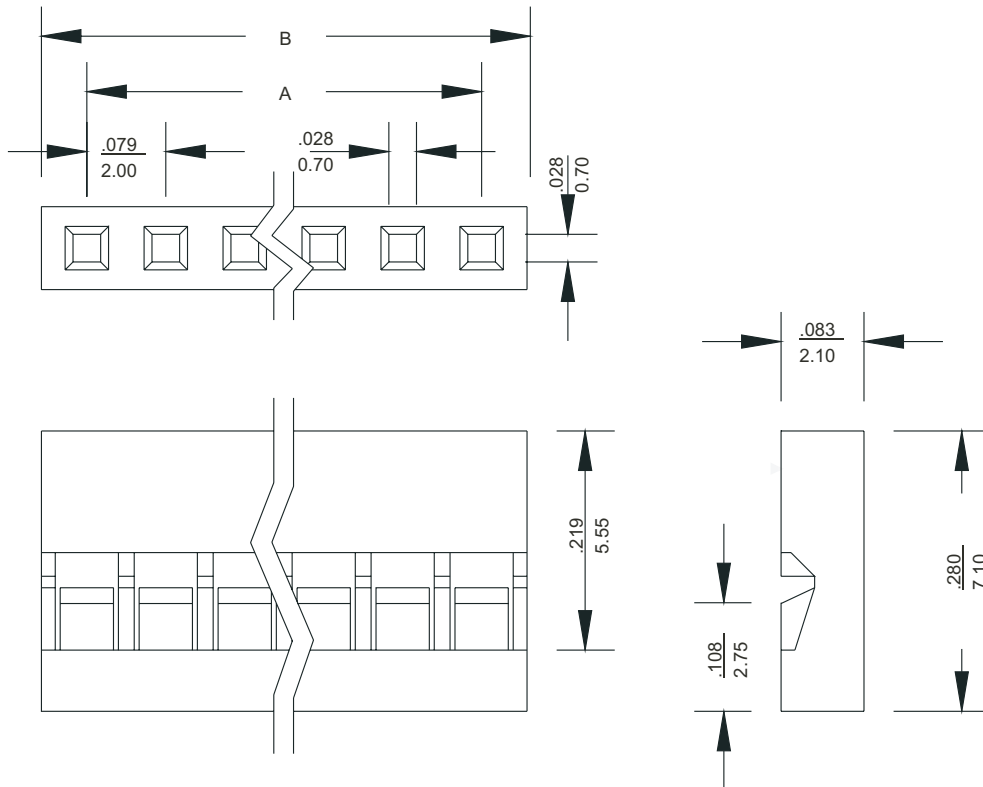
A-A

# .079" (2.0mm) Crimp Terminal Housing

## FH1 Series Single Row Crimp Terminal Housings

- \* Material : PBT, UL 94V-0
- \* Current rating : 2A, AC/DC
- \* Voltage rating : 250V, AC/DC
- \* Standard Color : black
- \* Accepts FHT terminal
- \* Mates with AH11, AH1L series headers
- \* 2-40 circuits available

inch  
mm



Dimensional information - inch/mm

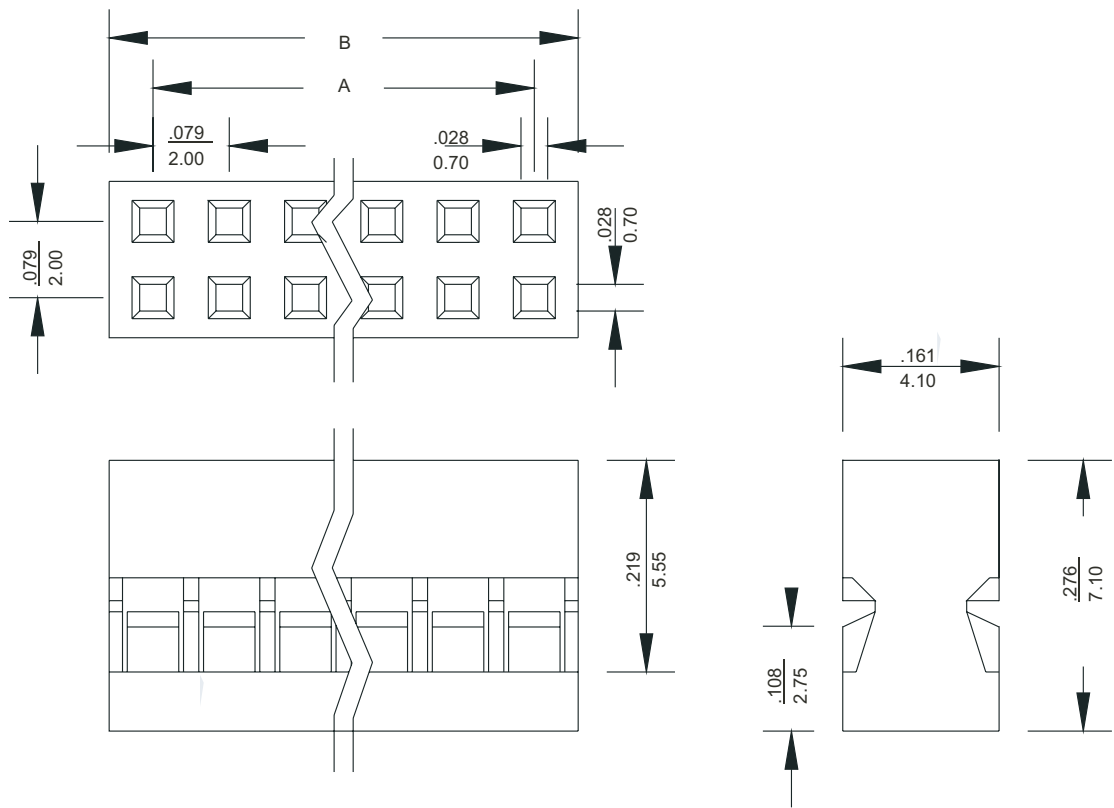
Circuits	Dim. A		Dim. B		Circuits	Dim. A		Dim. B	
	inch	mm	inch	mm		inch	mm	inch	mm
2	0.079	2.00	0.169	4.30	22	1.654	42.00	1.744	44.30
3	0.157	4.00	0.248	6.30	23	1.732	44.00	1.823	46.30
4	0.236	6.00	0.327	8.30	24	1.811	46.00	1.902	48.30
5	0.315	8.00	0.406	10.30	25	1.890	48.00	1.980	50.30
6	0.394	10.00	0.484	12.30	26	1.969	50.00	2.059	52.30
7	0.472	12.00	0.563	14.30	27	2.047	52.00	2.138	54.30
8	0.551	14.00	0.642	16.30	28	2.126	54.00	2.217	56.30
9	0.630	16.00	0.720	18.30	29	2.205	56.00	2.295	58.30
10	0.709	18.00	0.799	20.30	30	2.283	58.00	2.374	60.30
11	0.787	20.00	0.878	22.30	31	2.362	60.00	2.453	62.30
12	0.866	22.00	0.957	24.30	32	2.441	62.00	2.531	64.30
13	0.945	24.00	1.035	26.30	33	2.520	64.00	2.610	66.30
14	1.024	26.00	1.114	28.30	34	2.598	66.00	2.689	68.30
15	1.102	28.00	1.193	30.30	35	2.677	68.00	2.768	70.30
16	1.181	30.00	1.272	32.30	36	2.756	70.00	2.846	72.30
17	1.260	32.00	1.350	34.30	37	2.835	72.00	2.925	74.30
18	1.339	34.00	1.429	36.30	38	2.913	74.00	3.004	76.30
19	1.417	36.00	1.508	38.30	39	2.992	76.00	3.083	78.30
20	1.496	38.00	1.587	40.30	40	3.071	78.00	3.161	80.30
21	1.575	40.00	1.665	42.30					

# .079" (2.0mm) Crimp Terminal Housing

## FH2 Series Dual Row Crimp Terminal Housings

- \* Material : PBT, UL 94V-0
- \* Current rating : 2A, AC/DC
- \* Voltage rating : 250V, AC/DC
- \* Standard Color : black
- \* Accepts FHT terminal
- \* Mates with AH2I, AH2L series headers
- \* 4-80 circuits available

inch  
mm



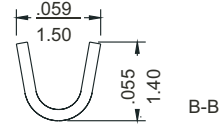
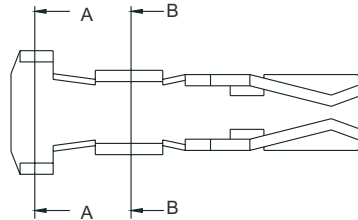
Dimensional information - inch/mm

Circuits	Dim. A		Dim. B		Circuits	Dim. A		Dim. B	
	inch	mm	inch	mm		inch	mm	inch	mm
4	0.079	2.00	0.169	4.30	44	1.654	42.00	1.744	44.30
6	0.157	4.00	0.248	6.30	46	1.732	44.00	1.823	46.30
8	0.236	6.00	0.327	8.30	48	1.811	46.00	1.902	48.30
10	0.315	8.00	0.406	10.30	50	1.890	48.00	1.980	50.30
12	0.394	10.00	0.484	12.30	52	1.969	50.00	2.059	52.30
14	0.472	12.00	0.563	14.30	54	2.047	52.00	2.138	54.30
16	0.551	14.00	0.642	16.30	56	2.126	54.00	2.217	56.30
18	0.630	16.00	0.720	18.30	58	2.205	56.00	2.295	58.30
20	0.709	18.00	0.799	20.30	60	2.283	58.00	2.374	60.30
22	0.787	20.00	0.878	22.30	62	2.362	60.00	2.453	62.30
24	0.866	22.00	0.957	24.30	64	2.441	62.00	2.531	64.30
26	0.945	24.00	1.035	26.30	66	2.520	64.00	2.610	66.30
28	1.024	26.00	1.114	28.30	68	2.598	66.00	2.689	68.30
30	1.102	28.00	1.193	30.30	70	2.677	68.00	2.768	70.30
32	1.181	30.00	1.272	32.30	72	2.756	70.00	2.846	72.30
34	1.260	32.00	1.350	34.30	74	2.835	72.00	2.925	74.30
36	1.339	34.00	1.429	36.30	76	2.913	74.00	3.004	76.30
38	1.417	36.00	1.508	38.30	78	2.992	76.00	3.083	78.30
40	1.496	38.00	1.587	40.30	80	3.071	78.00	3.161	80.30
42	1.575	40.00	1.665	42.30					

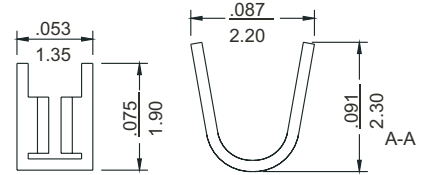
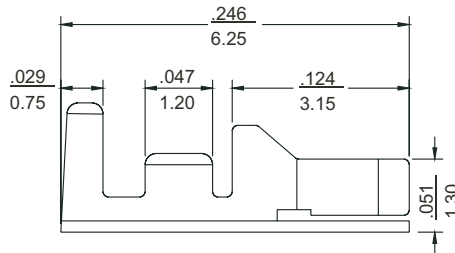
# .079" (2.0mm) Grid Crimp Type Connector

## DHT Crimp Terminal

- \* Material : Phosphor bronze
- \* Current rating : 2A, AC/DC
- \* Voltage rating : 125V, AC/DC
- \* Applicable wire AWG #30- #26
- \* Used in DH2 series housings



inch  
mm

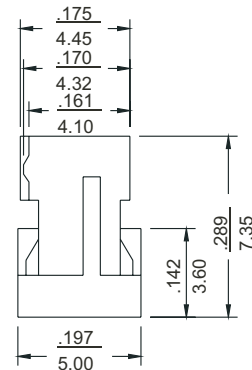
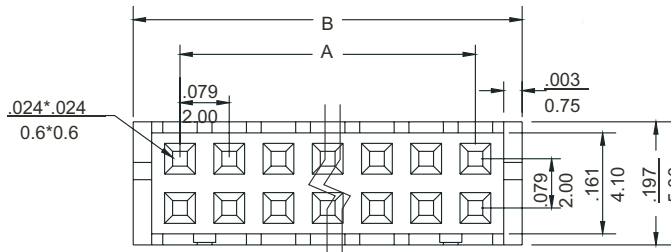


E118260

## DH2 Series Crimp Terminal Housings

- \* Material : Nylon UL 94V-0
- \* Current rating : 2A, AC/DC
- \* Voltage rating : 125V, AC/DC
- \* Standard color: black
- \* Dual row
- \* Accepts DHT terminal
- \* Mates with DH21, DH2L series headers
- \* 4-32 circuits available

inch  
mm



E118260

Dimensional information - inch/mm

Circuits	Dim. A		Dim. B		Circuits	Dim. A		Dim. B	
	inch	mm	inch	mm		inch	mm	inch	mm
4	0.079	2.00	0.228	5.80	20	0.709	18.00	0.858	21.80
6	0.157	4.00	0.307	7.80	22	0.787	20.00	0.937	23.80
8	0.236	6.00	0.386	9.80	24	0.866	22.00	1.016	25.80
10	0.315	8.00	0.465	11.80	26	0.945	24.00	1.094	27.80
12	0.394	10.00	0.543	13.80	28	1.024	26.00	1.173	29.80
14	0.472	12.00	0.622	15.80	30	1.102	28.00	1.252	31.80
16	0.551	14.00	0.701	17.80	32	1.181	30.00	1.331	33.80
18	0.630	16.00	0.780	19.80					

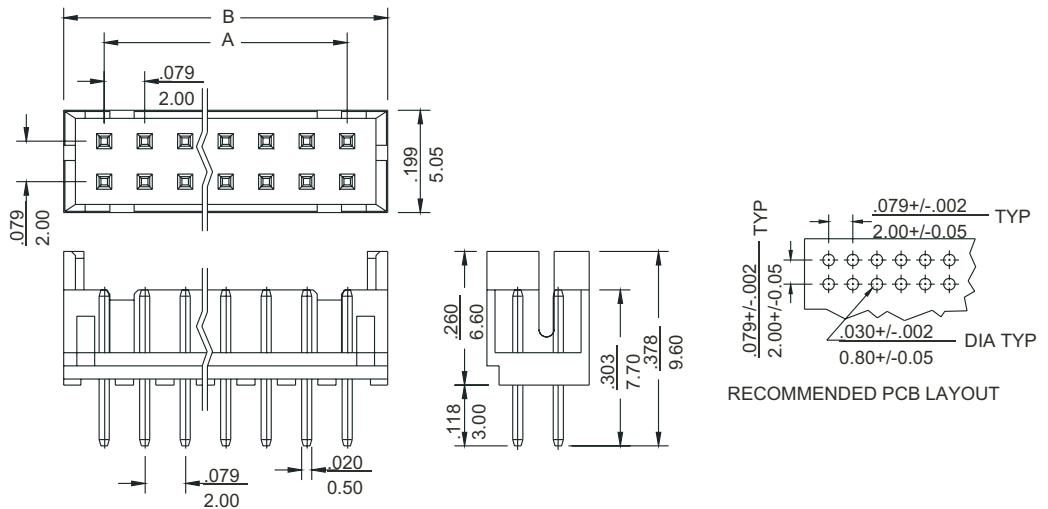


# .079" (2.0mm) Grid Crimp Type Header

## DH2I Series Straight Pin Headers

- \* Material : Nylon UL 94V-0
- \* Current rating : 2A, AC/DC
- \* Voltage rating : 125V, AC/DC
- \* Standard Color : Black
- \* Dual row
- \* Mates with DH2 series housings
- \* 4-32 circuits available

inch  
mm



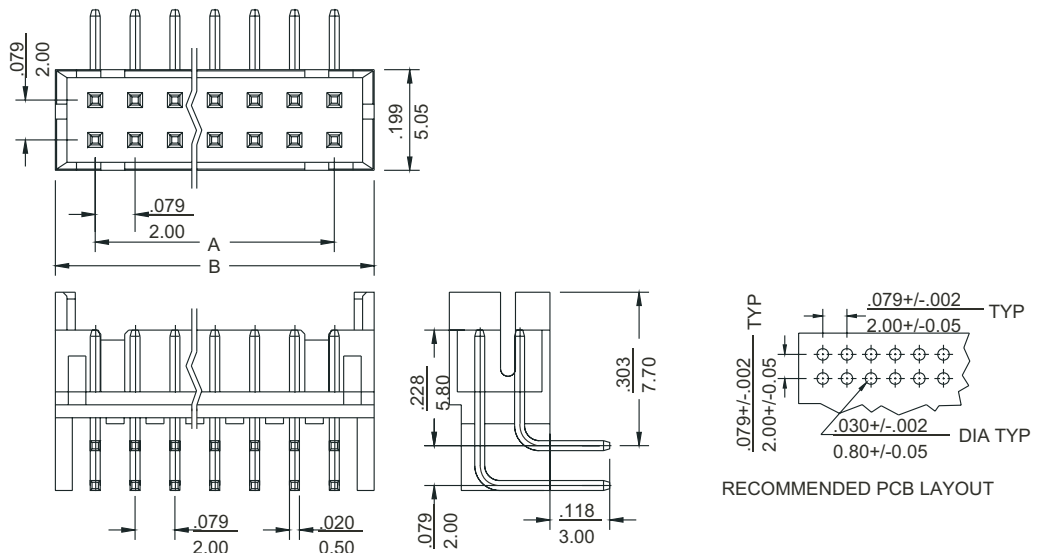
Dimensional information - inch/mm (DH2I/DH2L)

Circuits	Dim. A		Dim. B		Circuits	Dim. A		Dim. B	
	inch	mm	inch	mm		inch	mm	inch	mm
4	0.079	2.00	0.236	6.00	20	0.709	18.00	0.866	22.00
6	0.157	4.00	0.315	8.00	22	0.787	20.00	0.945	24.00
8	0.236	6.00	0.394	10.00	24	0.866	22.00	1.024	26.00
10	0.315	8.00	0.472	12.00	26	0.945	24.00	1.102	28.00
12	0.394	10.00	0.551	14.00	28	1.024	26.00	1.181	30.00
14	0.472	12.00	0.630	16.00	30	1.102	28.00	1.260	32.00
16	0.551	14.00	0.709	18.00	32	1.181	30.00	1.339	34.00
18	0.630	16.00	0.787	20.00					

## DH2L Series Right Angle Pin Headers

- \* Material : Nylon UL 94V-0
- \* Current rating : 2A, AC/DC
- \* Voltage rating : 125V, AC/DC
- \* Standard Color : Black
- \* Dual row
- \* Mates with DH2 series housings
- \* 4-32 circuits available

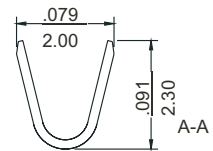
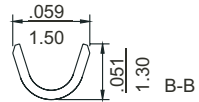
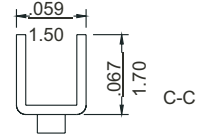
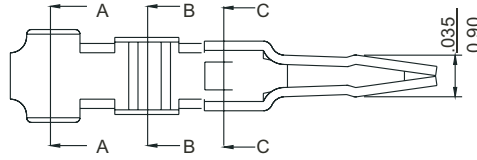
inch  
mm



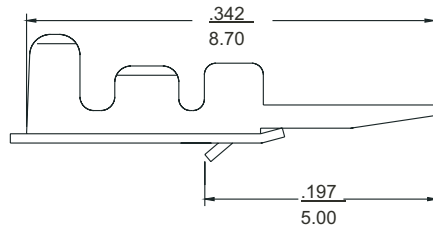
# .079" (2.0mm) Board-In Type Connector

## 100T Crimp Terminal

- \* Material : Brass
- \* Current rating : 2A, AC/DC
- \* Voltage rating : 125V, AC/DC
- \* Applicable wire AWG ~~30~~ -#24
- \* Used in H100 series housings



inch  
mm

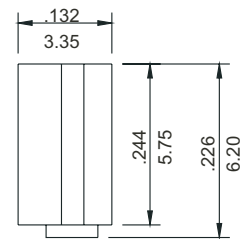
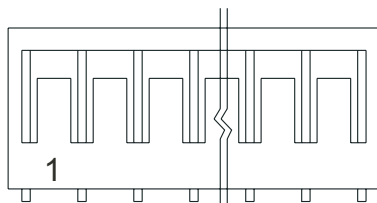
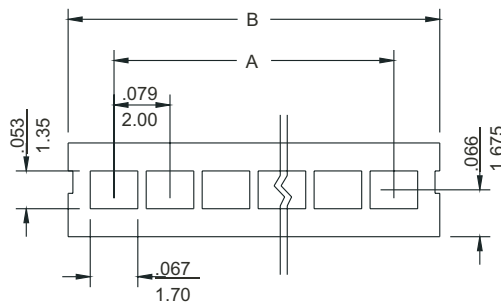


E118260

## H100 Series Crimp Terminal Housings

- \* Material : Nylon UL 94V-0
- \* Current rating : 2A, AC/DC
- \* Voltage rating : 125V, AC/DC
- \* Accepts 100T terminal
- \* 2-15 circuits available

inch  
mm



E118260

Dimensional information - inch/mm (H100/H100L)

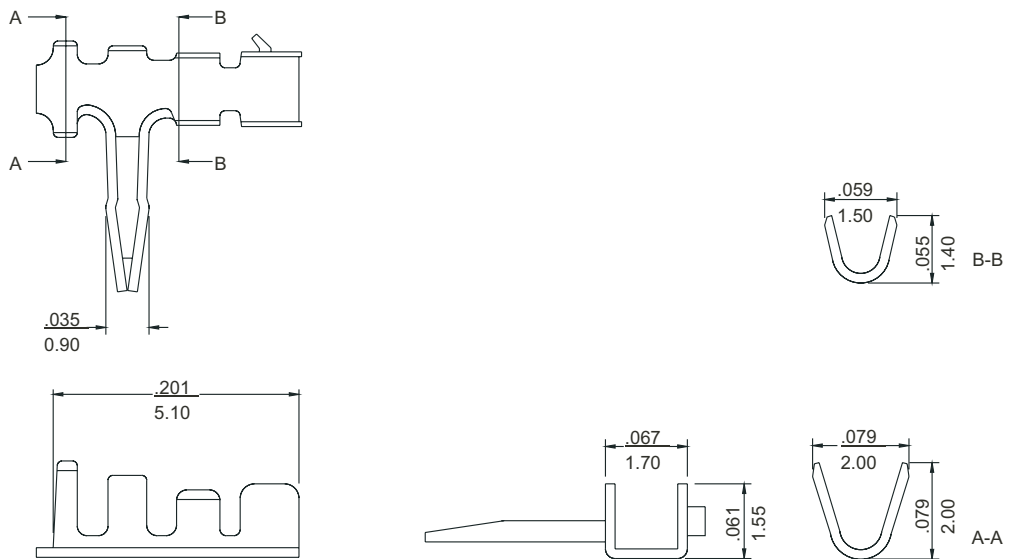
Circuits	Dim. A		Dim. B		Circuits	Dim. A		Dim. B	
	inch	mm	inch	mm		inch	mm	inch	mm
2	0.079	2.00	0.208	5.28	9	0.630	16.00	0.759	19.28
3	0.157	4.00	0.287	7.28	10	0.709	18.00	0.838	21.28
4	0.236	6.00	0.365	9.28	11	0.787	20.00	0.917	23.28
5	0.315	8.00	0.444	11.28	12	0.866	22.00	0.995	25.28
6	0.394	10.00	0.523	13.28	13	0.945	24.00	1.074	27.28
7	0.472	12.00	0.602	15.28	14	1.024	26.00	1.153	29.28
8	0.551	14.00	0.680	17.28	15	1.102	28.00	1.231	31.28

## .079" (2.0mm) Board-In Type Connector

### 100TL Side Entry Type Terminal

- \* Material : Brass
- \* Current rating : 2A, AC/DC
- \* Voltage rating : 125V, AC/DC
- \* Applicable wire AWG ~~30~~ - #4
- \* Used in H100L series housings

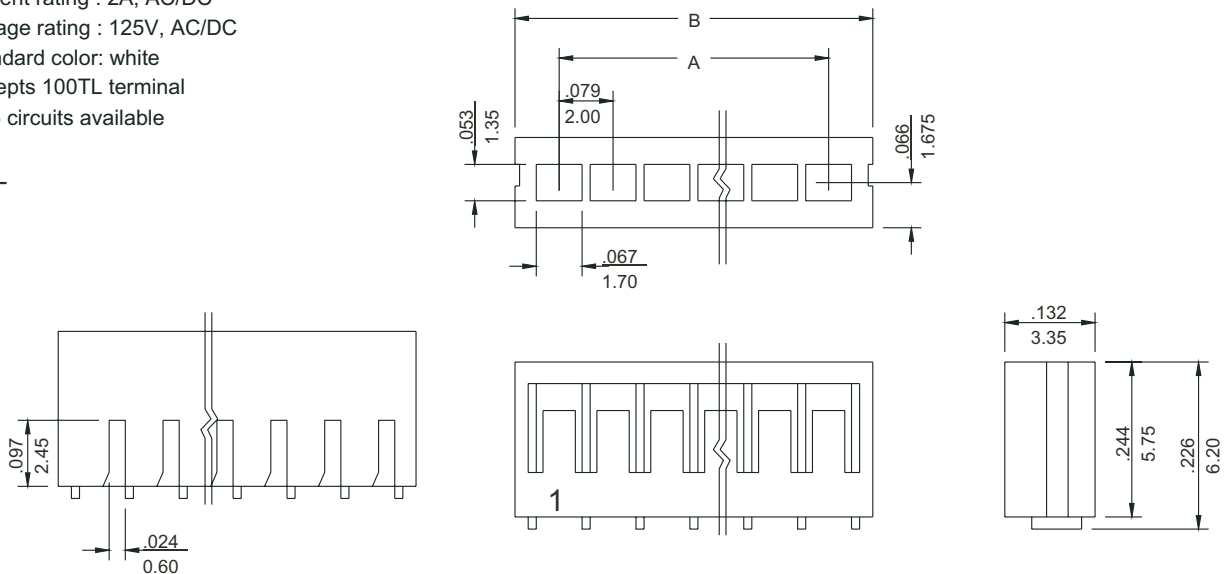
inch  
mm



### H100L Series Crimp Terminal Housings

- \* Material : Nylon UL 94V-0
- \* Current rating : 2A, AC/DC
- \* Voltage rating : 125V, AC/DC
- \* Standard color: white
- \* Accepts 100TL terminal
- \* 2-15 circuits available

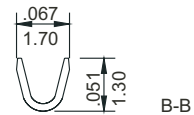
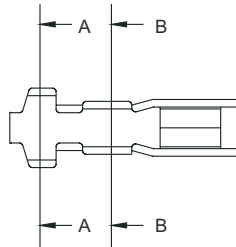
inch  
mm



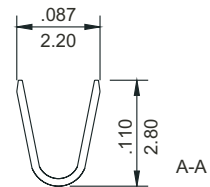
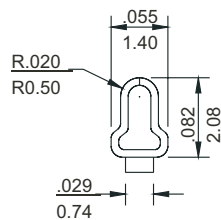
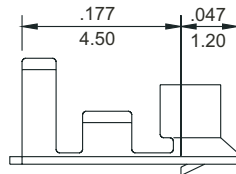
## .079" (2.0mm) Crimp Terminal Housing

### 110T Crimp Terminal

- \* Material : Phosphor bronze
- \* Current rating : 1A, AC/DC
- \* Voltage rating : 125V, AC/DC
- \* Applicable wire AWG #30- #26
- \* Used in H110 series housings



inch  
mm

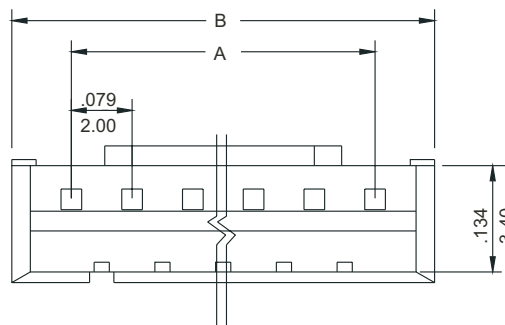


E118260

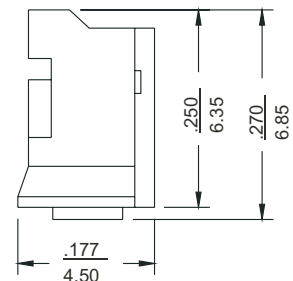
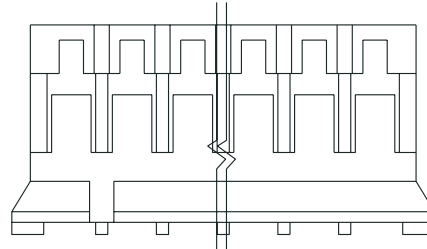
LR82315

### H110 Series Crimp Terminal Housings

- \* Material : Nylon UL 94V-0
- \* Current rating : 1A, AC/DC
- \* Voltage rating : 125V, AC/DC
- \* Standard color: White
- \* Accepts 110T terminal
- \* Mates with P110I, P110L series headers
- \* 2-16 circuits available



inch  
mm



E118260

LR82315

Dimensional information - mm (H110)

Circuits	Dim. A		Dim. B		Circuits	Dim. A		Dim. B	
	inch	mm	inch	mm		inch	mm	inch	mm
2	0.079	2.00	0.220	5.60	10	0.709	18.00	0.850	21.60
3	0.157	4.00	0.299	7.60	11	0.787	20.00	0.929	23.60
4	0.236	6.00	0.378	9.60	12	0.866	22.00	1.008	25.60
5	0.315	8.00	0.457	11.60	13	0.945	24.00	1.087	27.60
6	0.394	10.00	0.535	13.60	14	1.024	26.00	1.165	29.60
7	0.472	12.00	0.614	15.60	15	1.102	28.00	1.244	31.60
8	0.551	14.00	0.693	17.60	16	1.181	30.00	1.323	33.60
9	0.630	16.00	0.772	19.60					

# .079" (2.0mm) Center Header

## P110I Series Straight Pin Friction Lock Headers

- \* Material : Nylon UL 94V-0
- \* Contact : Phosphor bronze
- \* Current rating : 1A, AC/DC
- \* Voltage rating : 125V, AC/DC
- \* Standard color: White
- \* .020" (0.5mm) straight square pins
- \* Mates with H110 series housings
- \* 2-16 circuits available

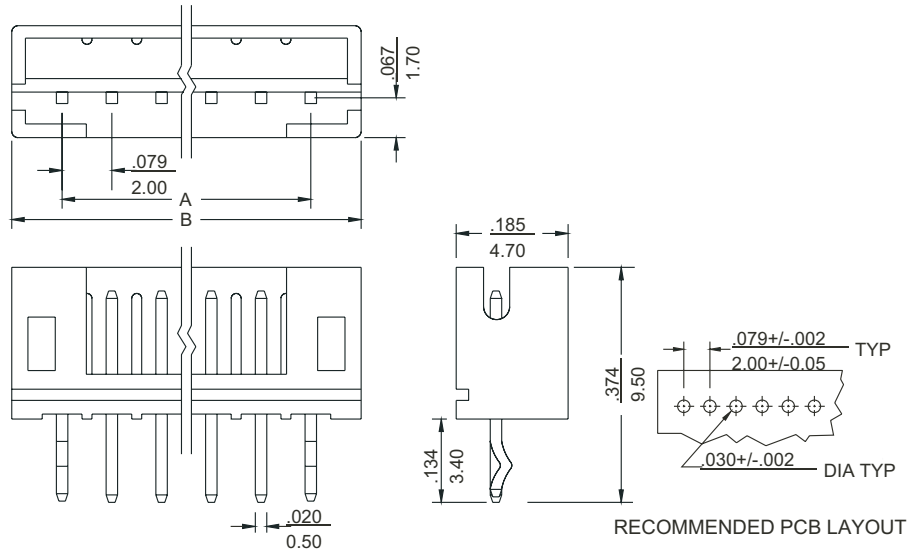
inch  
mm



E118260



LR82315



Dimensional information - mm (P110I/L)

Circuits	Dim. A		Dim. B		Circuits	Dim. A		Dim. B	
	inch	mm	inch	mm		inch	mm	inch	mm
2	0.079	2.00	0.236	6.00	10	0.709	18.00	0.866	22.00
3	0.157	4.00	0.315	8.00	11	0.787	20.00	0.945	24.00
4	0.236	6.00	0.394	10.00	12	0.866	22.00	1.024	26.00
5	0.315	8.00	0.472	12.00	13	0.945	24.00	1.102	28.00
6	0.394	10.00	0.551	14.00	14	1.024	26.00	1.181	30.00
7	0.472	12.00	0.630	16.00	15	1.102	28.00	1.260	32.00
8	0.551	14.00	0.709	18.00	16	1.181	30.00	1.339	34.00
9	0.630	16.00	0.787	20.00					

## P110L Series Right Angle Pin Friction Lock Headers

- \* Material : Nylon UL 94V-0
- \* Current rating : 1A, AC/DC
- \* Voltage rating : 125V, AC/DC
- \* Standard color: White
- \* .020" (0.5mm) right angle square pins
- \* Mates with H110 series housings
- \* 2-16 circuits available

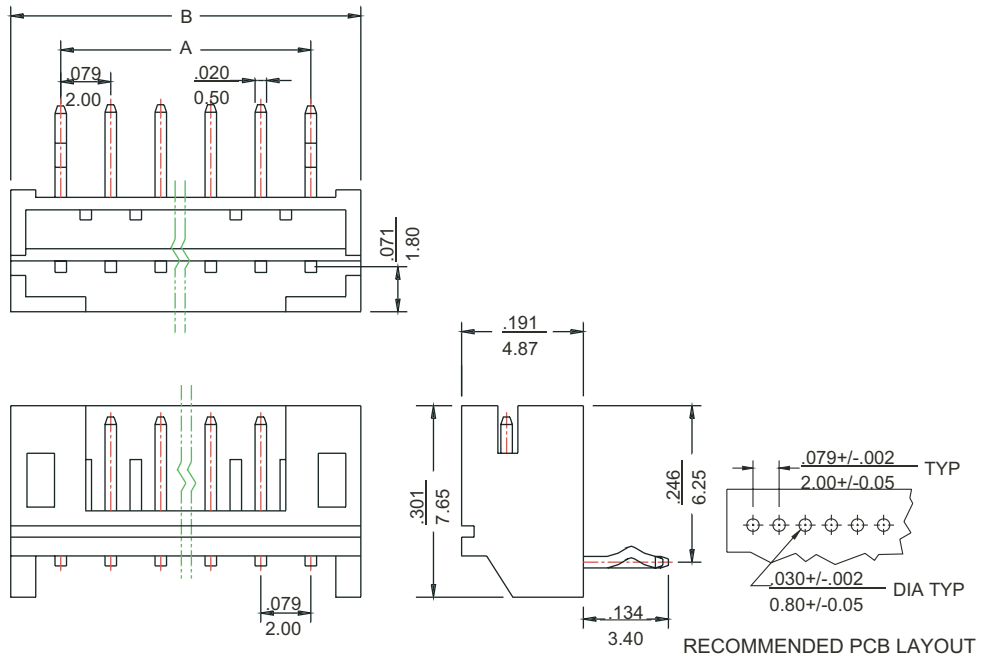
inch  
mm



E118260



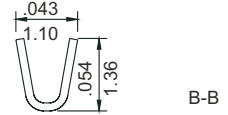
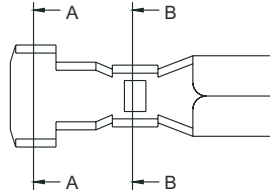
LR82315



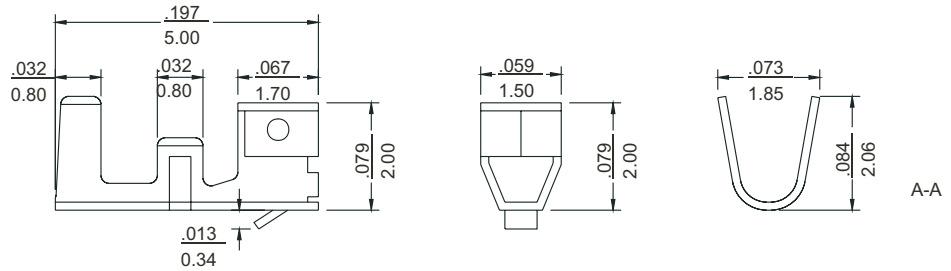
# .079" (2.0mm) Crimp Terminal Housing

## 1004T Crimp Terminal

- \* Material : Phosphor bronze
- \* Current rating : 1.5A, AC/DC
- \* Voltage rating : 125V, AC/DC
- \* Applicable wire AWG ~~30~~ #4
- \* Used in H1004 series housings



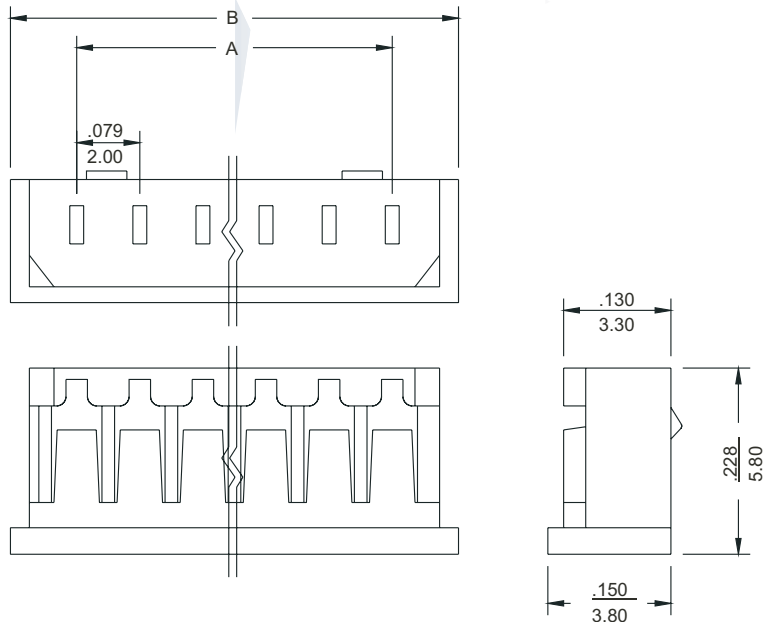
inch  
mm



## H1004 Series Crimp Terminal Housings

- \* Material : Nylon UL 94V-0
- \* Current rating : 1.5A, AC/DC
- \* Voltage rating : 125V, AC/DC
- \* Color : White
- \* Accepts 1004T terminal
- \* 2-15 circuits available

inch  
mm



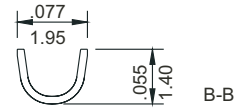
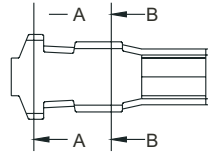
Dimensional information - inch/mm

Circuits	Dim. A		Dim. B		Circuits	Dim. A		Dim. B	
	inch	mm	inch	mm		inch	mm	inch	mm
2	0.079	2.00	0.236	6.00	9	0.630	16.00	0.787	20.00
3	0.157	4.00	0.315	8.00	10	0.709	18.00	0.866	22.00
4	0.236	6.00	0.394	10.00	11	0.787	20.00	0.945	24.00
5	0.315	8.00	0.472	12.00	12	0.866	22.00	1.024	26.00
6	0.394	10.00	0.551	14.00	13	0.945	24.00	1.102	28.00
7	0.472	12.00	0.630	16.00	14	1.024	26.00	1.181	30.00
8	0.551	14.00	0.709	18.00	15	1.102	28.00	1.260	32.00

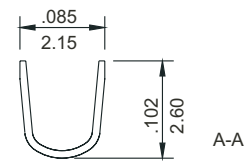
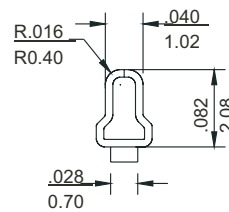
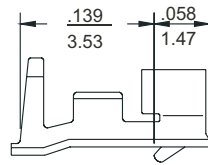
## .079" (2.0mm) Crimp Terminal Housing

### 200T Crimp Terminal

- \* Material : Phosphor bronze
- \* Current rating : 1A, AC/DC
- \* Voltage rating : 125V, AC/DC
- \* Applicable wire AWG #30- #24
- \* Used in H200 series housings



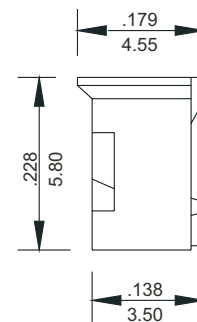
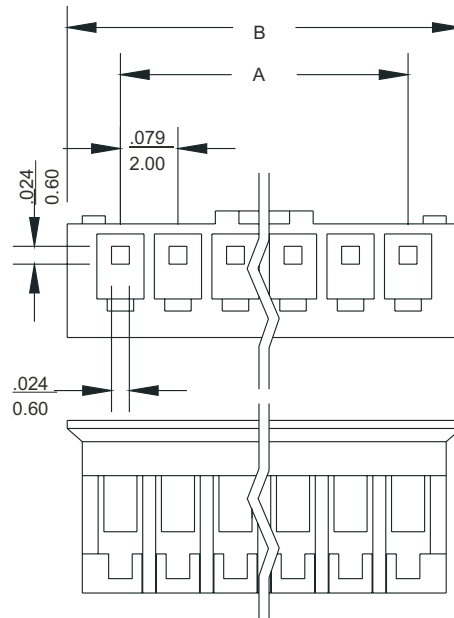
inch  
mm



### H200 Series Crimp Terminal Housings

- \* Material : Nylon UL 94V-0
- \* Current rating : 1A, AC/DC
- \* Voltage rating : 125V, AC/DC
- \* Accepts 200T terminal
- \* Mates P200I, P200L series headers
- \* 2-15 circuits available

inch  
mm



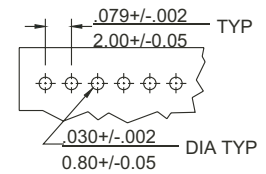
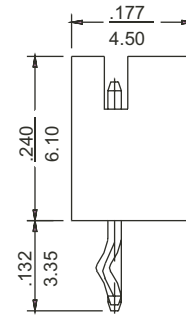
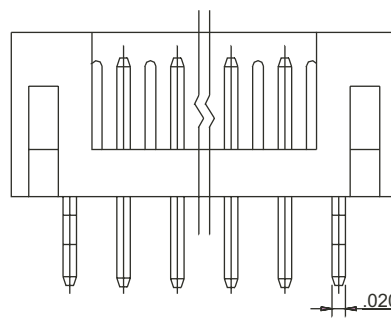
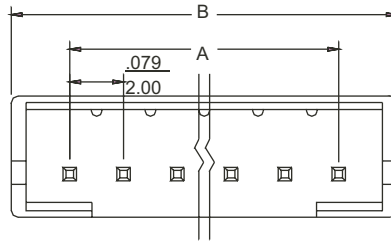
Dimensional information -inch/mm

Circuits	Dim. A		Dim.B		Circuits	Dim. A		Dim.B	
	inch	mm	inch	mm		inch	mm	inch	mm
2	0.079	2.00	0.224	5.70	9	0.630	16.00	0.776	19.70
3	0.157	4.00	0.303	7.70	10	0.709	18.00	0.854	21.70
4	0.236	6.00	0.382	9.70	11	0.787	20.00	0.933	23.70
5	0.315	8.00	0.461	11.70	12	0.866	22.00	1.012	25.70
6	0.394	10.00	0.539	13.70	13	0.945	24.00	1.091	27.70
7	0.472	12.00	0.618	15.70	14	1.024	26.00	1.169	29.70
8	0.551	14.00	0.697	17.70	15	1.102	28.00	1.248	31.70

## .079" (2.0mm) Center Headers

### P200I Series Straight Pin Friction LockHeaders

- \* Material : Nylon UL 94V-0
- \* Contact : Phosphor bronze
- \* Current rating : 1A, AC/DC
- \* Voltage rating : 125V, AC/DC
- \* Standard Color : Orange
- \* .020" (0.50mm) straight square pins
- \* Mates with H200 series housings
- \* 2-15 circuits available



RECOMMENDED PCB LAYOUT

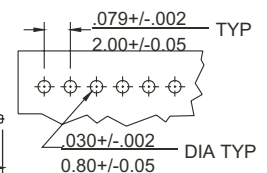
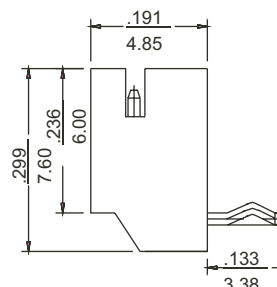
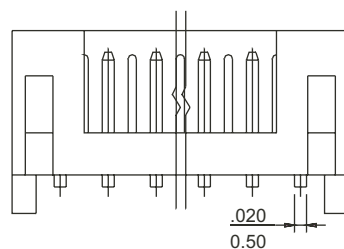
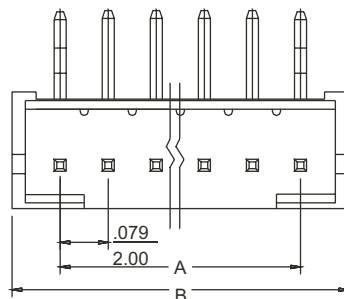
inch  
mm

Dimensional information -inch/mm (P200I/P200L)

Circuits	Dim. A		Dim. B		Circuits	Dim. A		Dim. B	
	inch	mm	inch	mm		inch	mm	inch	mm
2	0.079	2.00	0.240	6.10	9	0.630	16.00	0.791	20.10
3	0.157	4.00	0.319	8.10	10	0.709	18.00	0.870	22.10
4	0.236	6.00	0.398	10.10	11	0.787	20.00	0.949	24.10
5	0.315	8.00	0.476	12.10	12	0.866	22.00	1.028	26.10
6	0.394	10.00	0.555	14.10	13	0.945	24.00	1.106	28.10
7	0.472	12.00	0.634	16.10	14	1.024	26.00	1.185	30.10
8	0.551	14.00	0.713	18.10	15	1.102	28.00	1.264	32.10

### P200LI Series Right Angle Pin Friction LockHeaders

- \* Material : Nylon UL 94V-0
- \* Contact : Phosphor bronze
- \* Current rating : 1A, AC/DC
- \* Voltage rating : 125V, AC/DC
- \* Standard Color : Orange
- \* .020" (0.50mm) right angle square pins
- \* Mates with H200 series housings
- \* 2-15 circuits available



RECOMMENDED PCB LAYOUT

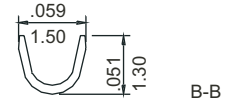
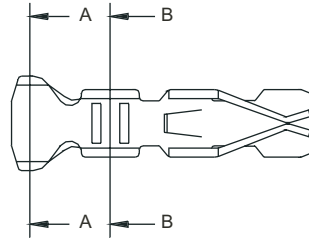
inch  
mm



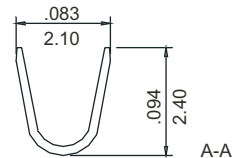
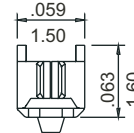
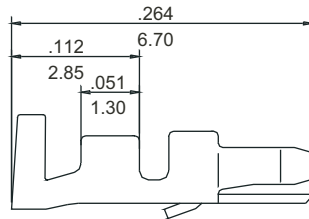
## .079" (2.0mm) Crimp Terminal Housing

### 20JT Crimp Terminal

- \* Material : Phosphor bronze
- \* Current rating : 3A, AC/DC
- \* Voltage rating : 250V, AC/DC
- \* Applicable wire AWG#8- #2
- \* Used in H20J series housings



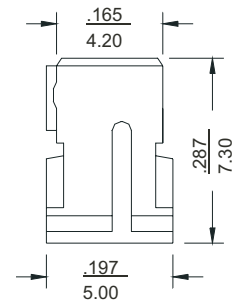
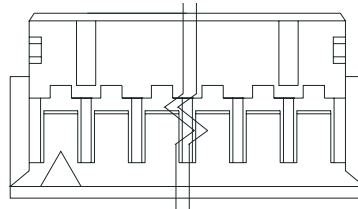
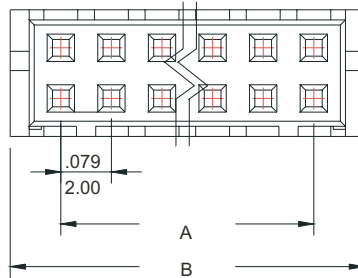
inch  
mm



### H20J Series Dual Row Crimp Terminal Housings

- \* Material : Nylon UL 94V-0
- \* Current rating : 3A, AC/DC
- \* Voltage rating : 250V, AC/DC
- \* Accepts 20JT terminal
- \* Mates with P20JI, P20JL series headers
- \* 10-32 circuits available

inch  
mm



Dimensional information - inch/mm

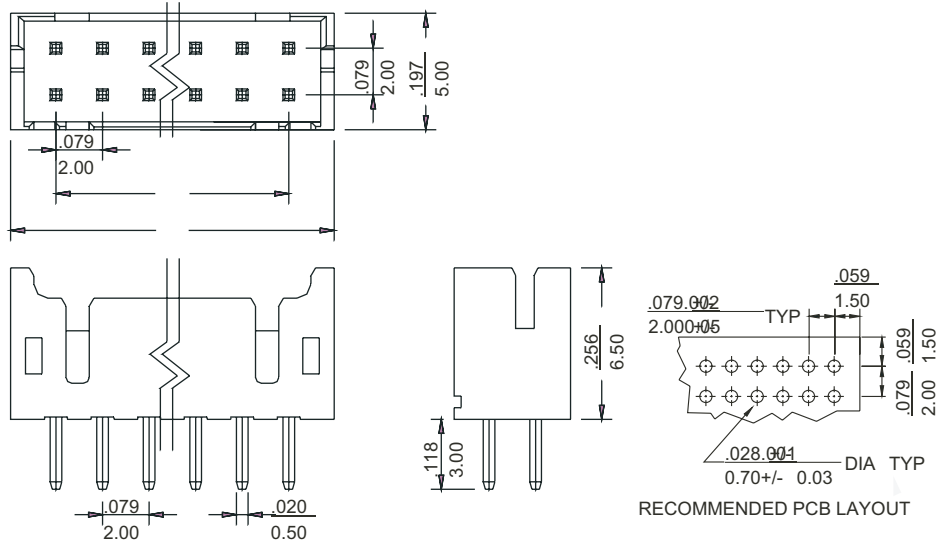
Circuits	Dim. A		Dim. B		Circuits	Dim. A		Dim. B	
	inch	mm	inch	mm		inch	mm	inch	mm
10	0.315	8.00	0.472	12.00	22	0.787	20.00	0.945	24.00
12	0.394	10.00	0.551	14.00	24	0.866	22.00	1.024	26.00
14	0.472	12.00	0.630	16.00	26	0.945	24.00	1.102	28.00
16	0.551	14.00	0.709	18.00	28	1.024	26.00	1.181	30.00
18	0.630	16.00	0.787	20.00	30	1.102	28.00	1.260	32.00
20	0.709	18.00	0.866	22.00	32	1.181	30.00	1.339	34.00

## .079" (2.0mm) Shrouded Headers

### P201I Series Straight Shrouded Headers

- \* Material : Nylon UL 94V-0
- \* Contact : Phosphor bronze
- \* Current rating : 31A, AC/DC
- \* Voltage rating : 250V, AC/DC
- \* .020" (0.5mm) straight square pins
- \* Mates with H20J series housings
- \* 10-32 circuits available

inch  
mm



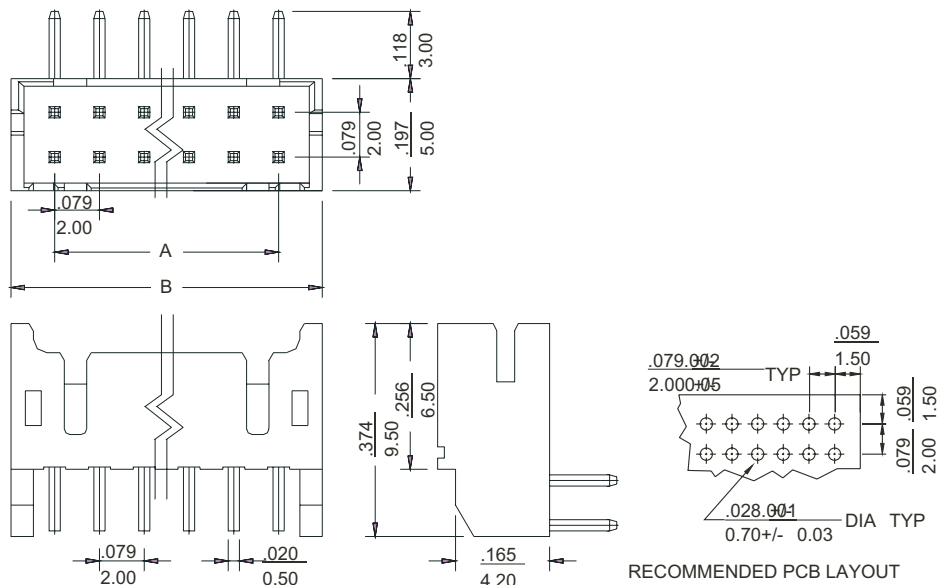
Dimensional information - inch/mm

Circuits	Dim. A		Dim. B		Circuits	Dim. A		Dim. B	
	inch	mm	inch	mm		inch	mm	inch	mm
10	0.315	8.00	0.472	12.00	22	0.787	20.00	0.945	24.00
12	0.394	10.00	0.551	14.00	24	0.866	22.00	1.024	26.00
14	0.472	12.00	0.630	16.00	26	0.945	24.00	1.102	28.00
16	0.551	14.00	0.709	18.00	28	1.024	26.00	1.181	30.00
18	0.630	16.00	0.787	20.00	30	1.102	28.00	1.260	32.00
20	0.709	18.00	0.866	22.00	32	1.181	30.00	1.339	34.00

### P201I Series Right Angle Shrouded Headers

- \* Contact : Phosphor bronze
- \* Current rating : 31A, AC/DC
- \* Voltage rating : 250V, AC/DC
- \* .020" (0.5mm) right angle square pins
- \* Mates with H20J series housings
- \* 10-32 circuits available

inch  
mm



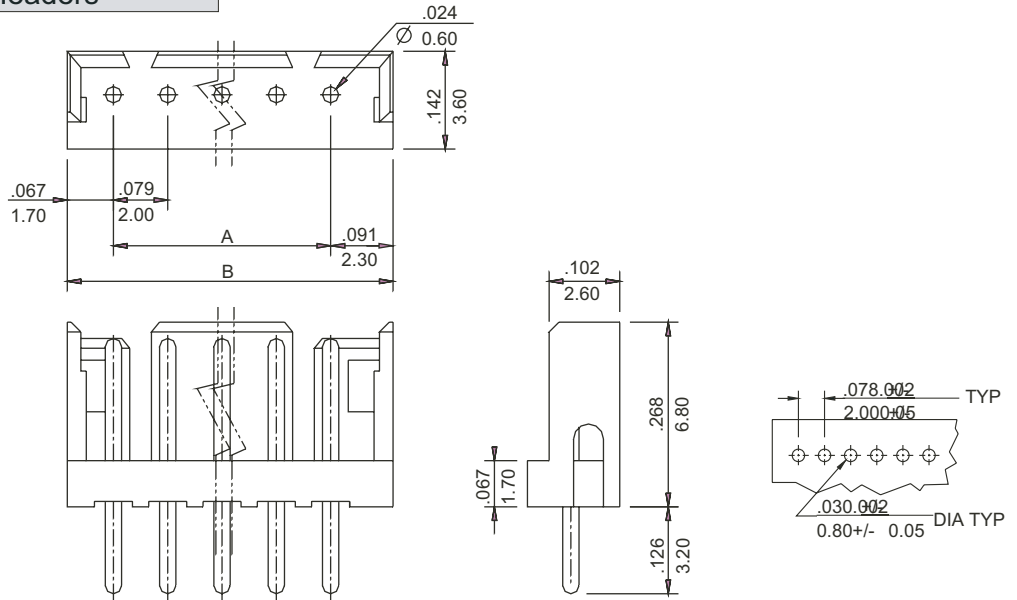
RECOMMENDED PCB LAYOUT

# .079" (2.0mm) Center Header

## P126I Series Straight Pin Headers

- \* Material : Nylon UL 94V-0
- \* Contact : Phosphor bronze
- \* Current rating : 1A, AC/DC
- \* Voltage rating : 100V, AC/DC
- \* 2-15 circuits available

inch  
mm



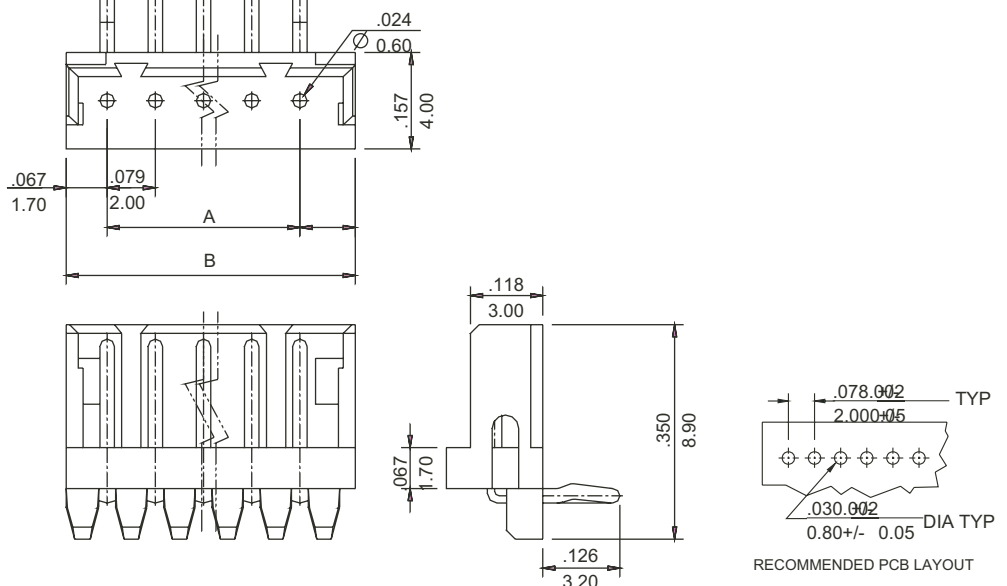
Dimensional information -mm

Circuits	Dim. A		Dim. B		Circuits	Dim. A		Dim. B	
	inch	mm	inch	mm		inch	mm	inch	mm
2	0.079	2.00	0.236	6.00	9	0.630	16.00	0.787	20.00
3	0.157	4.00	0.315	8.00	10	0.709	18.00	0.866	22.00
4	0.236	6.00	0.394	10.00	11	0.787	20.00	0.945	24.00
5	0.315	8.00	0.472	12.00	12	0.866	22.00	1.024	26.00
6	0.394	10.00	0.551	14.00	13	0.945	24.00	1.102	28.00
7	0.472	12.00	0.630	16.00	14	1.024	26.00	1.181	30.00
8	0.551	14.00	0.709	18.00	15	1.102	28.00	1.260	32.00

## P126L Series Right Angle Pin Headers

- \* Material : Nylon UL 94V-0
- \* Contact : Phosphor bronze
- \* Current rating : 1A, AC/DC
- \* Voltage rating : 100V, AC/DC
- \* 2-15 circuits available

inch  
mm



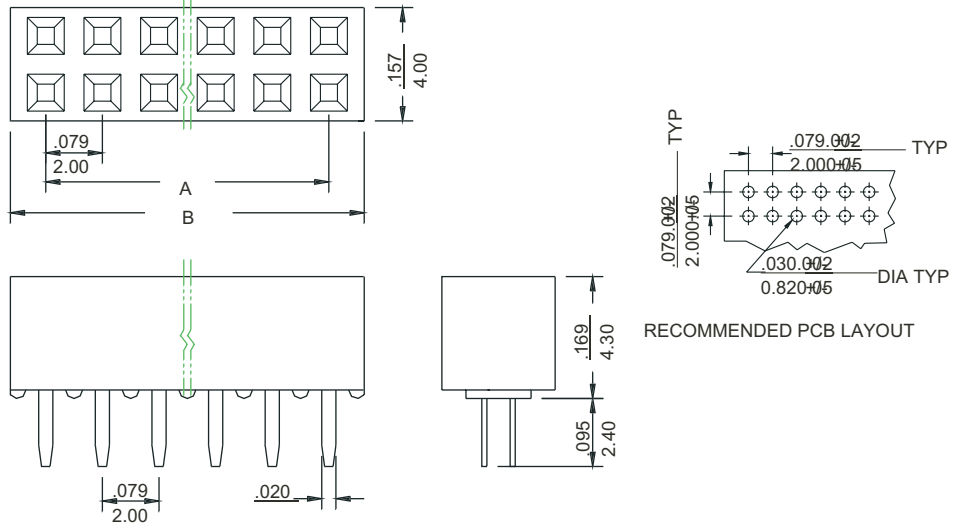
RECOMMENDED PCB LAYOUT

# .079" (2.0mm) Center Header

## 3302I Series Straight Pin Female Headers

- \* Material : Nylon UL 94V-0
- \* Contact : Phosphor bronze
- \* Current rating : 1A, AC/DC
- \* Voltage rating : 500V, AC/DC
- \* Mates with AH2I, AH2L series headers
- \* 4-80 circuits available

inch  
mm



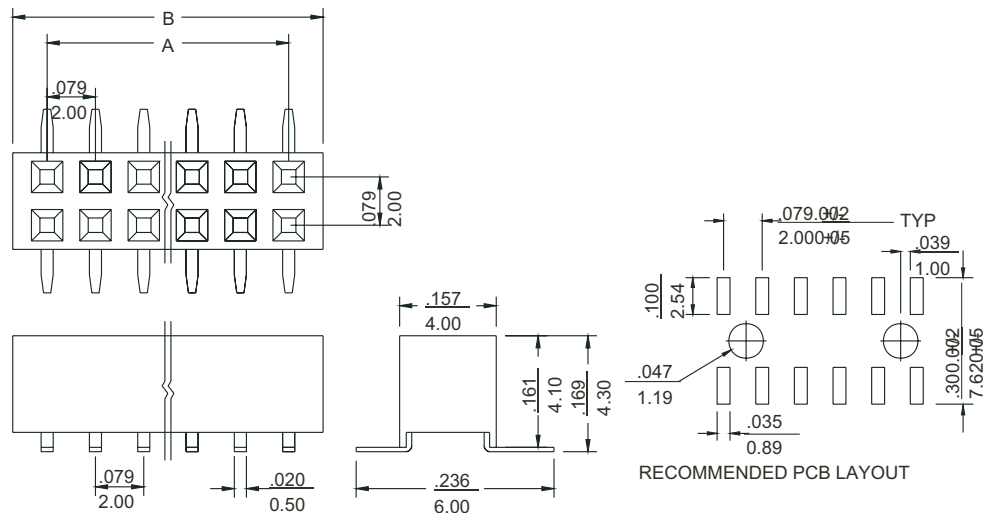
Dimensional information -inch/ mm (3302I/3302L)

Circuits	Dim. A		Dim. B		Circuits	Dim. A		Dim. B		Circuits	Dim. A		Dim. B	
	inch	mm	inch	mm		inch	mm	inch	mm		inch	mm	inch	mm
4	0.079	2.00	0.177	4.50	30	1.102	28.00	1.201	30.50	56	2.126	54.00	2.224	56.50
6	0.157	4.00	0.256	6.50	32	1.181	30.00	1.280	32.50	58	2.205	56.00	2.303	58.50
8	0.236	6.00	0.335	8.50	34	1.260	32.00	1.358	34.50	60	2.283	58.00	2.382	60.50
10	0.315	8.00	0.413	10.50	36	1.339	34.00	1.437	36.50	62	2.362	60.00	2.461	62.50
12	0.394	10.00	0.492	12.50	38	1.417	36.00	1.516	38.50	64	2.441	62.00	2.539	64.50
14	0.472	12.00	0.571	14.50	40	1.496	38.00	1.594	40.50	66	2.520	64.00	2.618	66.50
16	0.551	14.00	0.650	16.50	42	1.575	40.00	1.673	42.50	68	2.598	66.00	2.697	68.50
18	0.630	16.00	0.728	18.50	44	1.654	42.00	1.752	44.50	70	2.677	68.00	2.776	70.50
20	0.709	18.00	0.807	20.50	46	1.732	44.00	1.831	46.50	72	2.756	70.00	2.854	72.50
22	0.787	20.00	0.886	22.50	48	1.811	46.00	1.909	48.50	74	2.835	72.00	2.933	74.50
24	0.866	22.00	0.965	24.50	50	1.890	48.00	1.988	50.50	76	2.913	74.00	3.012	76.50
26	0.945	24.00	1.043	26.50	52	1.969	50.00	2.067	52.50	78	2.992	76.00	3.091	78.50
28	1.024	26.00	1.122	28.50	54	2.047	52.00	2.146	54.50	80	3.071	78.00	3.169	80.50

## 3302L Series SMD Female Headers

- \* Material : Nylon UL 94V-0
- \* Contact : Phosphor bronze
- \* Current rating : 1A, AC/DC
- \* Voltage rating : 500V, AC/DC
- \* Mates with AH2I, AH2L series headers.
- \* 4-80 circuits available

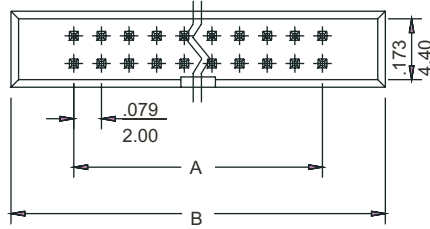
inch  
mm



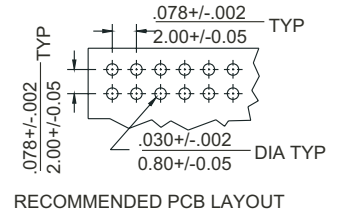
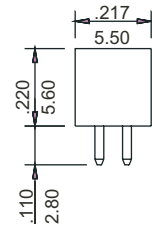
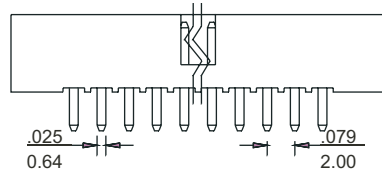
# .079" (2.0mm) Four Wall Shrouded Pin Header

## SDMI Series Straight Shrouded Headers

- \* Material : Nylon UL 94V-0
- \* Contact : Phosphor bronze
- \* Current rating : 1A, AC/DC
- \* Voltage rating : 500V, AC/DC
- \* Color : Black
- \* Dual row 10, 12, 14, 16, 20, 22, 24, 26, 30, 34, 36, 40, 44, 50, 52, 60, 64, 68 pins



inch  
mm



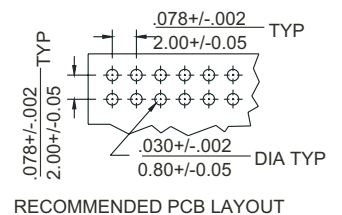
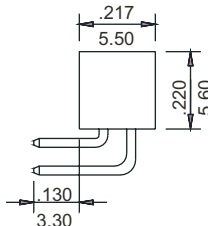
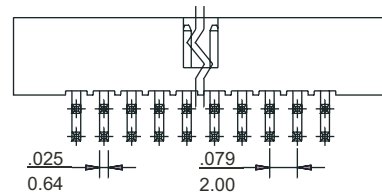
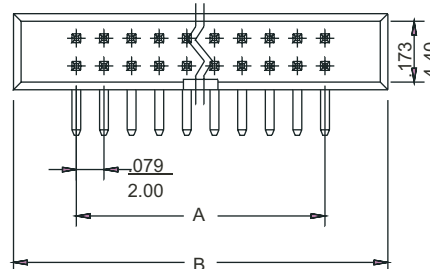
Dimensional information - inch/mm (SDMI/SDML)

Circuits	Dim. A		Dim. B		Circuits	Dim. A		Dim. B	
	inch	mm	inch	mm		inch	mm	inch	mm
10	0.315	8.00	0.167	17.20	34	1.260	32.00	1.622	41.20
12	0.394	10.00	0.756	19.20	36	1.339	34.00	1.701	43.20
14	0.472	12.00	0.835	21.20	40	1.496	38.00	1.858	47.20
16	0.551	14.00	0.913	23.20	44	1.654	42.00	2.016	51.20
18	0.630	16.00	0.992	25.20	50	1.890	48.00	2.252	57.20
20	0.709	18.00	1.071	27.20	52	1.969	50.00	2.331	59.20
22	0.787	20.00	1.150	29.20	60	2.283	58.00	2.646	67.20
24	0.866	22.00	1.228	31.20	64	2.441	62.00	2.803	71.20
26	0.945	24.00	1.307	33.20	68	2.598	66.00	2.961	75.20
30	1.102	28.00	1.465	37.20					

## SDML Series Straight Shrouded Headers

- \* Material : Nylon UL 94V-0
- \* Contact : Phosphor bronze
- \* Current rating : 1A, AC/DC
- \* Voltage rating : 500V, AC/DC
- \* Color : Black
- \* Dual row 10, 12, 14, 16, 20, 22, 24, 26, 30, 34, 36, 40, 44, 50, 52, 60, 64, 68 pins

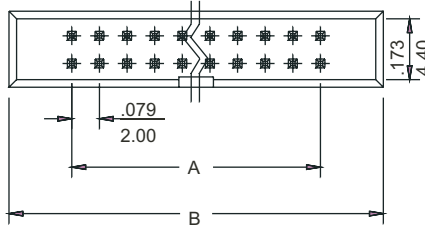
inch  
mm



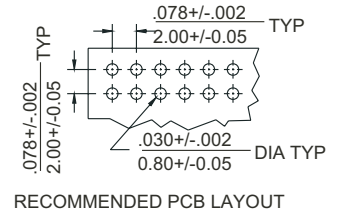
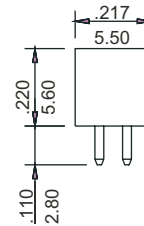
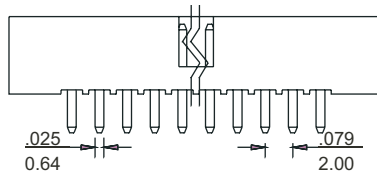
# .079" (2.0mm) Four Wall Shrouded Pin Header

## SDMI Series Straight Shrouded Headers

- \* Material : Nylon UL 94V-0
- \* Contact : Phosphor bronze
- \* Current rating : 1A, AC/DC
- \* Voltage rating : 500V, AC/DC
- \* Color : Black
- \* Dual row 10, 12, 14, 16, 20, 22, 24, 26, 30, 34, 36, 40, 44, 50, 52, 60, 64, 68 pins



inch  
mm



Dimensional information - inch/mm (SDMI/SDML)

Circuits	Dim. A		Dim. B		Circuits	Dim. A		Dim. B	
	inch	mm	inch	mm		inch	mm	inch	mm
10	0.315	8.00	0.167	17.20	34	1.260	32.00	1.622	41.20
12	0.394	10.00	0.756	19.20	36	1.339	34.00	1.701	43.20
14	0.472	12.00	0.835	21.20	40	1.496	38.00	1.858	47.20
16	0.551	14.00	0.913	23.20	44	1.654	42.00	2.016	51.20
18	0.630	16.00	0.992	25.20	50	1.890	48.00	2.252	57.20
20	0.709	18.00	1.071	27.20	52	1.969	50.00	2.331	59.20
22	0.787	20.00	1.150	29.20	60	2.283	58.00	2.646	67.20
24	0.866	22.00	1.228	31.20	64	2.441	62.00	2.803	71.20
26	0.945	24.00	1.307	33.20	68	2.598	66.00	2.961	75.20
30	1.102	28.00	1.465	37.20					

## SDML Series Straight Shrouded Headers

- \* Material : Nylon UL 94V-0
- \* Contact : Phosphor bronze
- \* Current rating : 1A, AC/DC
- \* Voltage rating : 500V, AC/DC
- \* Color : Black
- \* Dual row 10, 12, 14, 16, 20, 22, 24, 26, 30, 34, 36, 40, 44, 50, 52, 60, 64, 68 pins

inch  
mm

