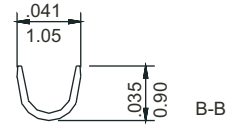
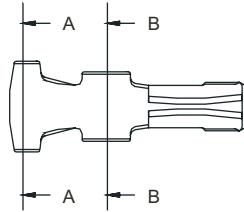


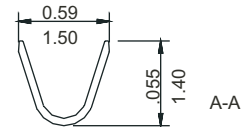
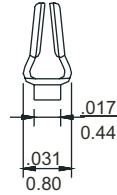
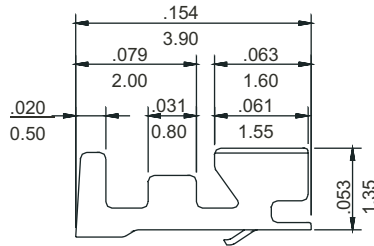
.039" (1.00mm) Crimp Terminal Housing

10J1T Crimp Terminal

- * Material : Phosphor bronze
- * Current rating : 1A, AC/DC
- * Voltage rating : 50V, AC/DC
- * Applicable wire AWG #32- #28
- * Used in H10J1 series housings

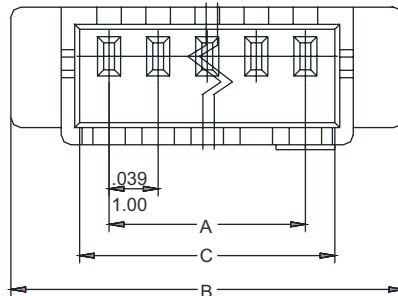


inch
mm

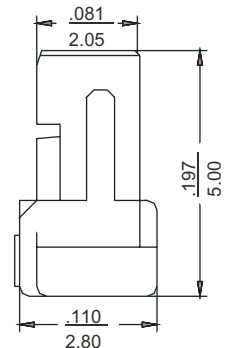
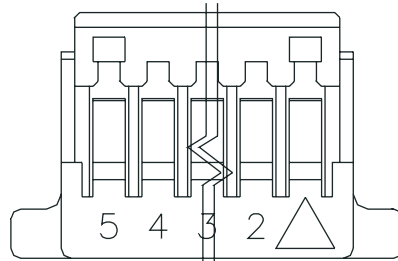


H10J1 Series Receptacle Housings

- * Material : Nylon UL 94V-0
- * Current rating : 1A, AC/DC
- * Voltage rating : 50V, AC/DC
- * Color : White
- * Accepts 10J1T terminal
- * Mates with P10J1I-SMT, P10J1L-SMT series headers
- * 2-15 circuits available



inch
mm



Dimensional information - inch/mm (H10J1)

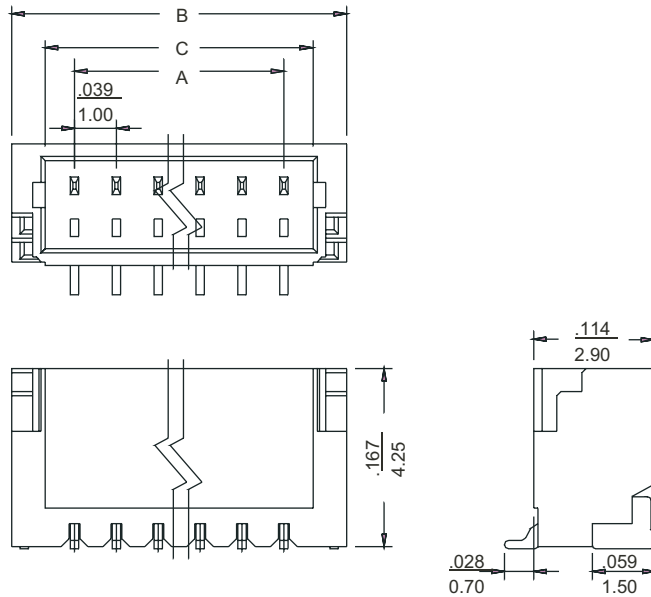
Circuits	Dim. A		Dim. B		Dim. C		Circuits	Dim. A		Dim. B		Dim. C	
	inch	mm	inch	mm	inch	mm		inch	mm	inch	mm	inch	mm
2	0.039	1.00	0.197	5.00	0.094	2.40	9	0.315	8.00	0.472	12.00	0.370	9.40
3	0.079	2.00	0.236	6.00	0.134	3.40	10	0.354	9.00	0.512	13.00	0.409	10.40
4	0.118	3.00	0.276	7.00	0.173	4.40	11	0.394	10.00	0.551	14.00	0.449	11.40
5	0.157	4.00	0.315	8.00	0.213	5.40	12	0.433	11.00	0.591	15.00	0.488	12.40
6	0.197	5.00	0.354	9.00	0.252	6.40	13	0.472	12.00	0.630	16.00	0.528	13.40
7	0.236	6.00	0.394	10.00	0.291	7.40	14	0.512	13.00	0.669	17.00	0.567	14.40
8	0.276	7.00	0.433	11.00	0.331	8.40	15	0.551	14.00	0.709	18.00	0.606	15.40

.039" (1.00mm) Shrouded Header

P10J1I SMT Series Straight Pin Shrouded Headers

- * Material : Nylon UL 94V-0
- * Contact : Brass
- * Current rating : 1A, AC/DC
- * Voltage rating : 50V, AC/DC
- * Mates with H10J1 series housings
- * 2-15 circuits available

inch
mm



Dimensional information - inch/mm (P10J1I/ P10J1L)

Circuits	Dim. A		Dim. B		Dim. C		Circuits	Dim. A		Dim. B		Dim. C	
	inch	mm	inch	mm	inch	mm		inch	mm	inch	mm	inch	mm
2	0.039	1.00	0.157	4.00	0.094	2.40	9	0.315	8.00	0.433	11.00	0.370	9.40
3	0.079	2.00	0.197	5.00	0.134	3.40	10	0.354	9.00	0.472	12.00	0.409	10.40
4	0.118	3.00	0.236	6.00	0.173	4.40	11	0.394	10.00	0.512	13.00	0.449	11.40
5	0.157	4.00	0.276	7.00	0.213	5.40	12	0.433	11.00	0.551	14.00	0.488	12.40
6	0.197	5.00	0.315	8.00	0.252	6.40	13	0.472	12.00	0.591	15.00	0.528	13.40
7	0.236	6.00	0.354	9.00	0.291	7.40	14	0.512	13.00	0.630	16.00	0.567	14.40
8	0.276	7.00	0.394	10.00	0.331	8.40	15	0.551	14.00	0.669	17.00	0.606	15.40

P10J1L SMT Series Right Angle Pin Shrouded Headers

- * Material : Nylon UL 94V-0
- * Contact : Brass
- * Current rating : 1A, AC/DC
- * Voltage rating : 50V, AC/DC
- * Mates with H10J1 series housings
- * 2-15 circuits available

inch
mm

